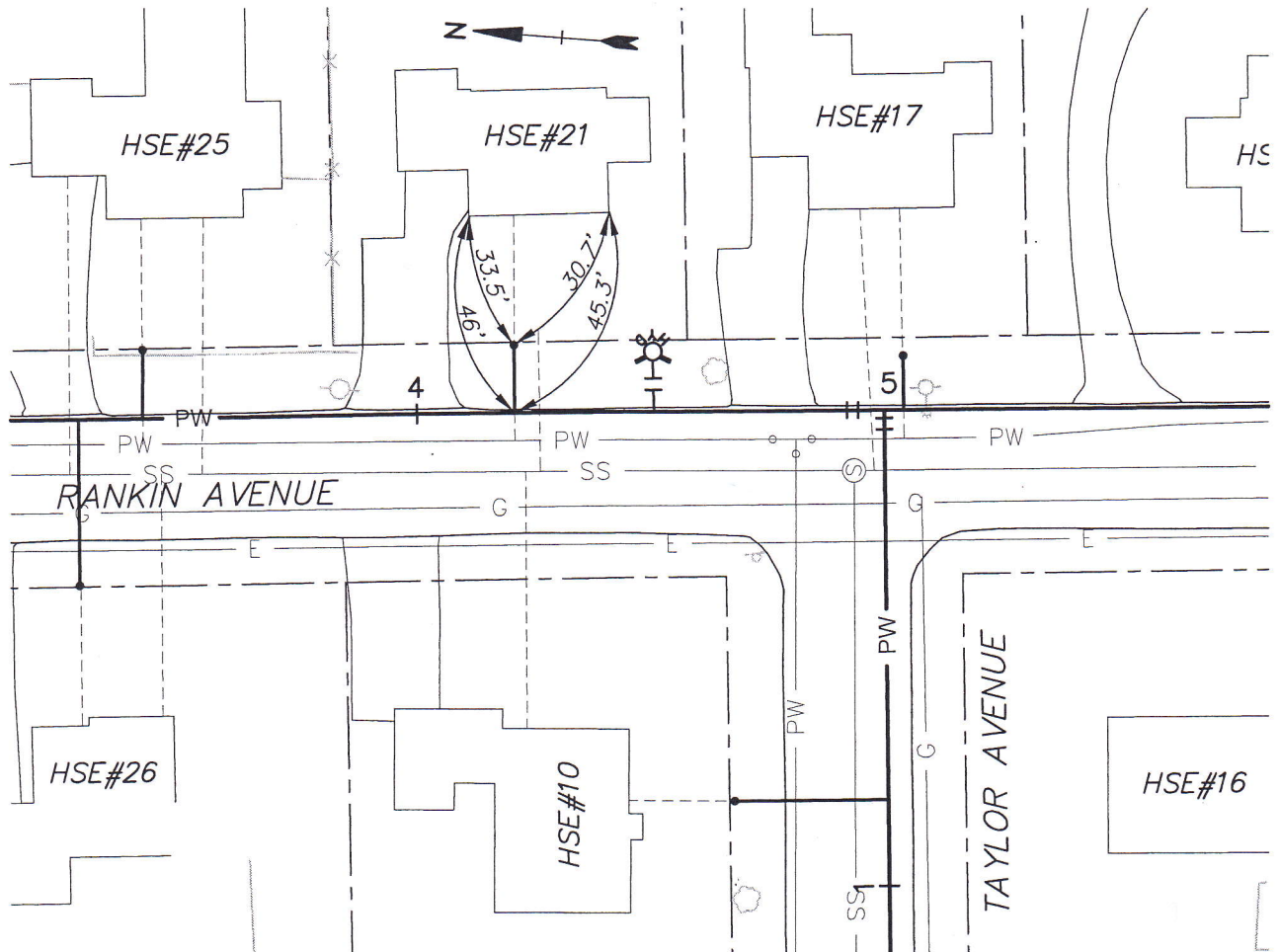


JOB NO.: E526

STREET ADDRESS: HSE#21 RANKIN AVENUE



LOAM & SEED _____
BIT. DRIVEWAY _____
BIT. CURBS _____
BIT. SIDEWALK _____
CONC. CURB _____
CONC. SIDEWALK _____

SERVICE INSTALLED: 9-17-07
SIZE: 1"
MATERIAL: 1-CORP., 1-C. STOP WITH BOX
DEPTH AT MAIN: 4.8'
DEPTH AT CURB STOP: 4.8'
LENGTH OF Cu PIPE: 14.0'+1.0' = 15.0'