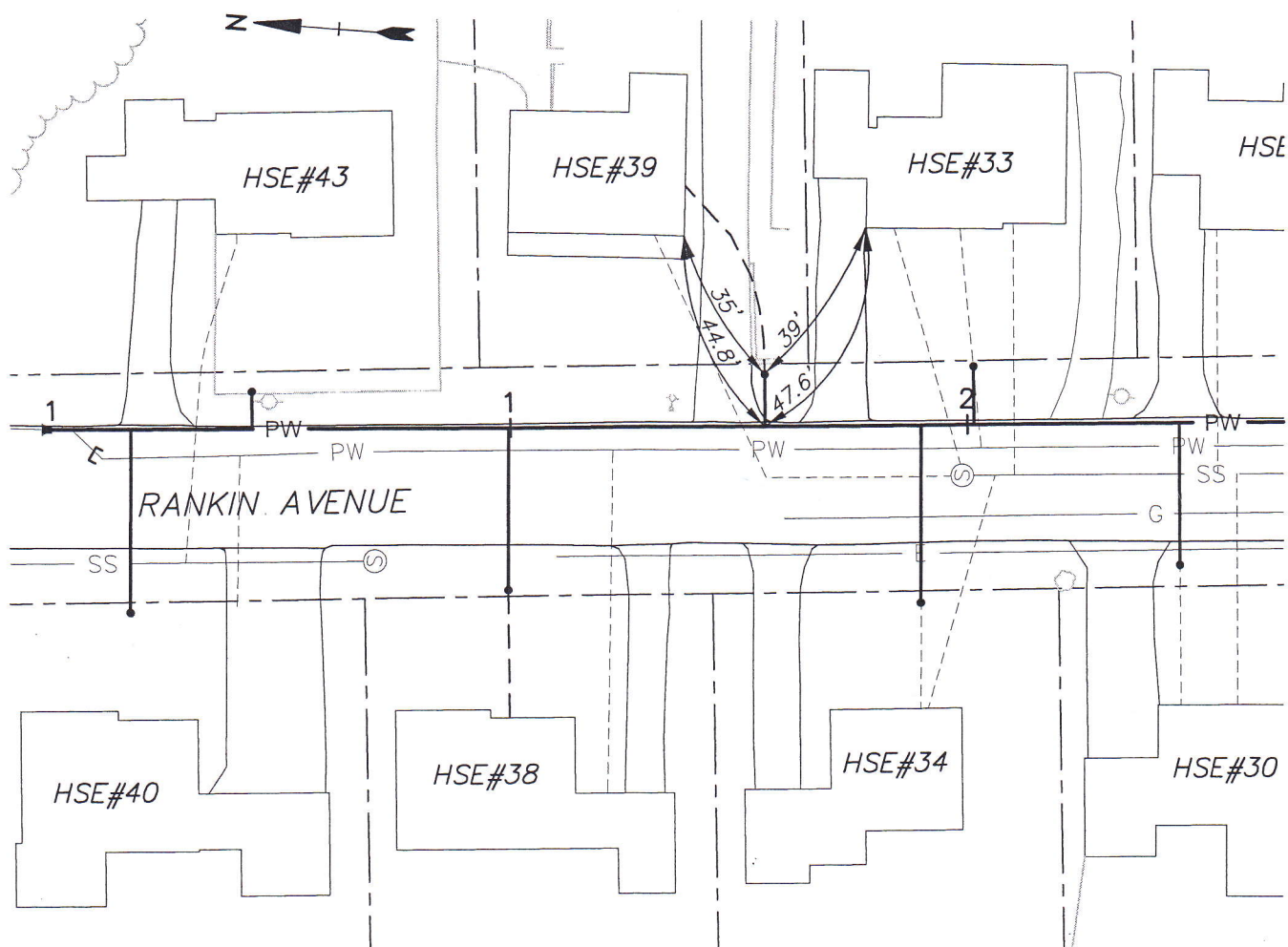


STREET ADDRESS: HSE#39 RANKIN AVENUE

LOAM & SEED \_\_\_\_\_  
BIT. DRIVEWAY \_\_\_\_\_  
BIT. CURBS \_\_\_\_\_  
BIT. SIDEWALK \_\_\_\_\_  
CONC. CURB \_\_\_\_\_  
CONC. SIDEWALK \_\_\_\_\_

ADDED 6.7' OF 6" PVC TO PREVIOUS  
SANITARY SERVICE TO REPAIR  
CROSSING WATER SERVICE

SERVICE INSTALLED: 9-18-07  
SIZE: 1"  
MATERIAL: 1-CORP., 1-C. STOP WITH BOX  
DEPTH AT MAIN: 5.0'  
DEPTH AT CURB STOP: 5.5'  
LENGTH OF Cu PIPE: 12.5+1.3' = 13.8'