

BOARD OF PUBLIC WORKS  
MILL ROAD SANITARY SEWER PROJECT  
EAST LONGMEADOW, MASSACHUSETTS

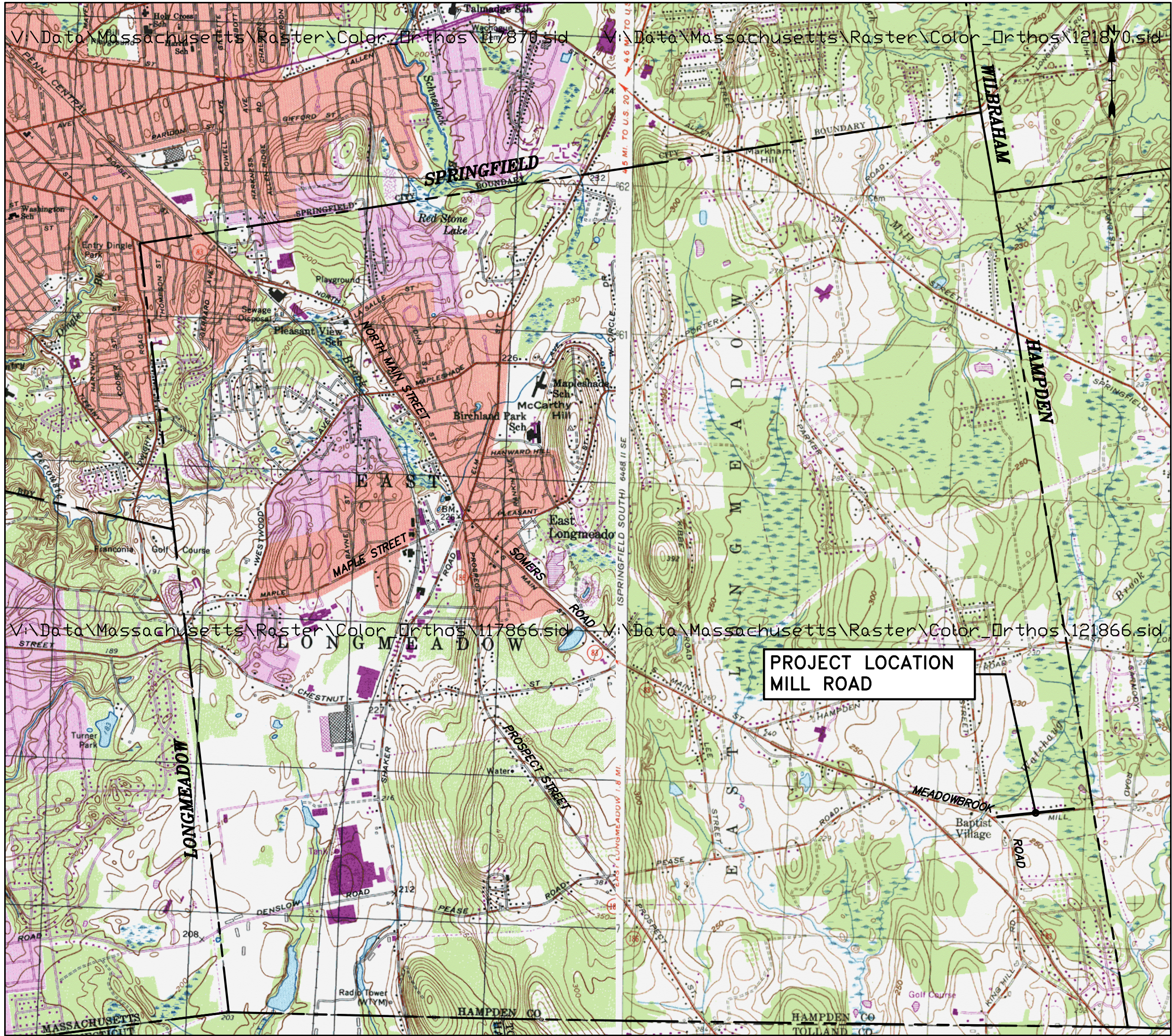
JULY 2004

BOARD OF PUBLIC WORKS

DANIEL S. BURACK, CHAIRMAN  
JOHN F. MAYBURY  
MICHAEL A. PERKINS

TOWN ENGINEER / DIRECTOR

DAVID J. GROMASKI, P.E.



PROJECT LOCUS  
SCALE: 1" = 2000'

**Tighe&Bond**  
Consulting Engineers

**RECORD PLAN**

THIS RECORD PLAN WAS PREPARED BASED ON LIMITED INFORMATION GATHERED DURING CONSTRUCTION OF THE PROJECT AND INDICATES ONLY SIGNIFICANT CHANGES MADE FROM THE DESIGN PLANS DURING CONSTRUCTION.

COMPLETE SET 7 SHEETS

LEGEND

EXISTING DRAIN MANHOLE	DMH Ⓣ
EXISTING SANITARY MANHOLE	SMH Ⓢ
EXISTING CATCH BASIN	CB ☐
PROPOSED SANITARY OR COMBINED MANHOLE	SMH Ⓢ
PROPOSED DRAIN MANHOLE	DMH Ⓣ
PROPOSED CATCH BASIN	CB ☐
EXISTING PUBLIC WATER LINE	———— PW ————
EXISTING SANITARY SEWER LINE	———— SS ————
EXISTING GAS LINE	———— G ————
EXISTING TELEPHONE LINE	———— T ————
EXISTING ELECTRICAL LINE	———— E ————
EXISTING SANITARY FORCE MAIN	———— SS ————
EXISTING STORM DRAIN LINE	———— SD ————
PROPOSED SEWER LINE	———— SS ————
PROPOSED HAYBALE/SILTATION FENCE	· · · · ·
PROPERTY LINE	———— ℙ ————
EDGE OF PAVEMENT	————
RETAINING WALL	— v — v — v — v — v — v —
GUARDRAIL	— □ — □ — □ — □ — □ — □ —
RAILROAD TRACKS	— + — + — + — + — + — + —
STONE WALL	— o — o — o — o — o — o —
WIRE OR CHAIN LINK FENCE	— x — x — x — x — x — x —
WETLANDS FLAGGING	◆ C-1
APPROXIMATE WETLANDS BOUNDARY	— · — · — · — · — · — · —
APPROXIMATE 100' BUFFER ZONE BOUNDARY	— — — — —
PROPOSED LOW PRESSURE SANITARY SEWER	— · — · — · — · — · — · — LPSS
EDGE OF WOODED AREA	~~~~~
HEDGES	o o o o o o o o o o o o o o o o
STREET LIGHT	✱
UTILITY POLE	⦿
UTILITY POLE WITH LIGHT	⦿ ✱
DECIDUOUS TREE	⊙
CONIFEROUS TREE	✱
CONIFEROUS SHRUB	✱
STREET SIGN	⌞
EXISTING WATER GATE	○
WATER SHUT OFF	⊕
EXISTING HYDRANT	⦿
HEADWALL	⌒
GAS GATE	○
MISC. OBJECT	⌒
BORE HOLE	⊕ B-2
TEST PIT REQUIRED	⊗
LENGTH OF 6" SEWER SERVICE PIPE FROM WYE	L=21'
DEPTH TO CROWN OF PIPE AT END OF SERVICE STUB	D=4.5'

ABBREVIATIONS

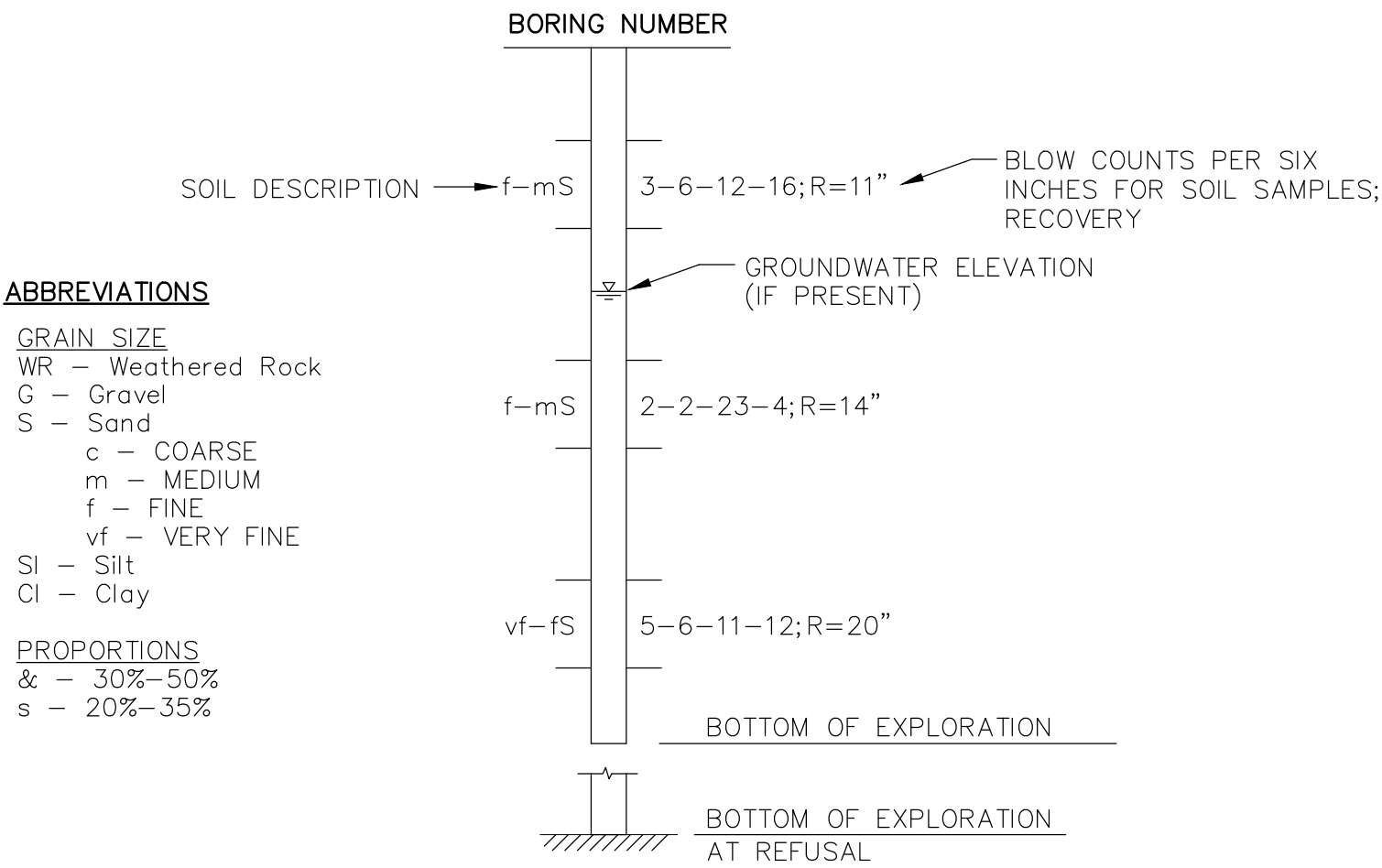
ASBESTOS CEMENT PIPE	AC	IRON PIPE	IP
BITUMINOUS CONCRETE	BIT CONC	MAIL BOX	MB
BITUMINOUS CONCRETE CAPE COD BERM	BIT CAPE	MANHOLE	MH
CAST IRON	CI	MECHANICAL JOINT	MJ
CATCH BASIN	CB	NOT TO SCALE	N.T.S.
CHAIN LINK FENCE	CLF	PAVED WALK	PW
CLASS OF PIPE	CL	POLYETHYLENE PIPE	PE
CONCRETE	CONC	POLY-VINYL CHLORIDE	PVC
CONCRETE WALK	CW	PROPERTY LINE	ℙ
CORRUGATED METAL PIPE	CMP	REINFORCED CONCRETE PIPE	RCP
DEBRIS	DB	RIGHT OF WAY	R.O.W.
DIMENSION RATIO	DR	SANITARY MANHOLE	SMH
DRAIN MANHOLE	DMH	STATION	STA
DRIVEWAY	DW	STONE BOUND	SB
DUCTILE IRON	DI	STREET LINE	ℙ
EROSION CONTROL	EC	TEMPORARY BENCH MARK	TBM
GARAGE	GAR	TELEPHONE POLE	TP
GAS GATE	GG	TRAFFIC CONTROL	TC
GRANITE CURB	GR CURB	UNDER CONSTRUCTION	UC
GUY WIRE	GW	UTILITY POLE	U.P.
GUY POLE	GP	UTILITY STRUCTURE	UT
HIGH PRESSURE	HP	UNDELINEATED WETLAND AREA	UWA
HOUSE	HSE	WATER GATE	WG
HYDRANT	HYD		
INVERT	INV		
NOT SERVICED	N.S.		

GENERAL NOTES

- EXISTING UTILITY LOCATIONS ARE BASED ON AVAILABLE INFORMATION. THE CONTRACTOR SHALL DETERMINE THE EXACT LOCATION OF UTILITIES BY TEST PIT WHEN AUTHORIZED OR DIRECTED BY THE ENGINEER.
- PRIOR TO COMMENCING SEWER CONSTRUCTION WORK, THE CONTRACTOR SHALL EXCAVATE TEST PITS WHERE INDICATED AND AS DIRECTED BY THE ENGINEER TO LOCATE EXISTING UTILITIES PRIOR TO CONSTRUCTION. SECTIONS OF PROPOSED SEWER MAY HAVE TO BE ADJUSTED BASED ON LOCATION AND DEPTH OF EXISTING UTILITIES.
- PRIOR TO COMMENCING SEWER CONSTRUCTION WORK, THE CONTRACTOR SHALL INVESTIGATE ALL WATER MAIN, CULVERT AND OTHER EXISTING UTILITY CROSSINGS TO VERIFY ELEVATIONS. IN THE EVENT OF CONFLICT, THE ENGINEER SHALL DETERMINE CROSSING "UNDER" OR "OVER", OR MAY DIRECT THE CONTRACTOR TO RELAY SECTIONS OF EXISTING PIPE, IF NO OTHER FEASIBLE SOLUTION IS PRACTICAL.
- THE CONTRACTOR SHALL REMOVE AND REPLACE FENCES, MAILBOXES, CURBING, ETC. AS NECESSARY. CONDITION OF REPLACED ITEMS SHALL BE EQUAL OR BETTER THAN ORIGINAL CONDITION PRIOR TO REMOVAL.
- BORING LOCATIONS SHOWN ARE APPROXIMATE ONLY AND BORINGS ARE NOT WARRANTED OR GUARANTEED IN ANY WAY TO REPRESENT THE EXISTING CONDITIONS. BORING LOGS ARE INCLUDED IN THE SPECIFICATIONS (SECTION 00300).
- PROPERTY LINE INFORMATION SHOWN ON THE PLANS WAS TAKEN FROM AVAILABLE ASSESSOR MAP INFORMATION AND IS SHOWN FOR REFERENCE PURPOSES ONLY.
- LOCATION OF PROPOSED SEWER AND SANITARY SERVICES ARE APPROXIMATE ONLY AND MAY BE ADJUSTED AFTER INVESTIGATION WORK. FINAL LOCATIONS TO BE APPROVED IN THE FIELD BY THE ENGINEER.
- WHEREVER POSSIBLE, THE SANITARY SEWERS SHALL BE LAID AT LEAST 10 FEET (HORIZONTALLY) AND 18 INCHES (VERTICALLY) FROM ALL EXISTING WATER MAINS.
- TRENCH DAMS SHALL BE CONSTRUCTED AROUND THE PROPOSED PVC SEWER PIPE IN ACCORDANCE WITH THE SPECIFICATIONS AND CONSTRUCTION DETAILS INCLUDED HERewith.
- CONTRACTOR TO REPLACE ANY AND ALL DAMAGED STORM DRAINS WITH SECTION OF SAME PIPE TYPE AND SIZE, EXCEPT AS PROVIDED FOR IN THE BID ITEMS AND AS SHOWN ON THE PLANS. THIS WORK SHALL BE IN ACCORDANCE WITH ENGINEER'S INSTRUCTION, AND AT NO ADDITIONAL COST TO THE OWNER.
- DAMAGE TO UNDERGROUND UTILITIES IS THE RESPONSIBILITY OF THE CONTRACTOR. PROPER REPAIRS SHALL BE MADE BY THE CONTRACTOR OR UTILITY COMPANY, AS ARRANGED BY THE CONTRACTOR, AND AS ACCEPTABLE TO THE ENGINEER. NO COMPENSATION SHALL BE ALLOWED UNDER THIS CONTRACT FOR THE REPAIR OF THIRD-PARTY UTILITIES IN THE PROJECT AREA.
- THE CONTRACTOR SHALL TAKE NECESSARY PRECAUTIONS TO MAINTAIN EXISTING WATER AND GAS SERVICES TO RESIDENTS ALONG THE PROJECT ROUTE. DAMAGED SERVICES SHALL BE REPAIRED IMMEDIATELY AT NO ADDITIONAL COST TO THE OWNER.
- RELOCATION AND/OR REPLACEMENT OF EXISTING WATER MAINS, AS FOUND TO BE REQUIRED, WILL BE MADE IN ACCORDANCE WITH THE BID ITEMS AS AUTHORIZED BY THE ENGINEER.
- ALL SERVICES LEFT AT THE PROPERTY LINE SHALL BE CAPPED.
- THE CONTRACTOR SHALL MAINTAIN EMERGENCY ACCESS TO ALL PROPERTIES WITHIN THE PROJECT AT ALL TIMES.
- SANITARY SEWER MANHOLES SHALL BE 48-INCH DIAMETER, UNLESS SHOWN OTHERWISE.
- THE CONDITION OF EXISTING CULVERT CROSSINGS IS UNKNOWN. THE CONTRACTOR IS RESPONSIBLE FOR PROTECTING THE INTEGRITY OF ALL CONDUITS WHILE INSTALLING THE PROPOSED SEWERS, INCLUDING THE REPAIR OR REPLACEMENT OF ANY CONDUITS THAT ARE DAMAGED OR REMOVED AS A RESULT OF INSTALLATION OF THE SEWERS.
- SILTATION CONTROL MEASURES SHALL BE TAKEN AT ALL CATCH BASINS WITHIN THE PROJECT AREA TO PREVENT SILTATION OF THE TOWN'S STORM DRAINAGE SYSTEM.
- ALL EXISTING DRIVEWAYS ARE BITUMINOUS CONCRETE TYPE UNLESS OTHERWISE SOWN ON THE PLANS.
- A SINGLE BENCHMARK HAS BEEN PROVIDED HEREIN. THE CONTRACTOR IS RESPONSIBLE FOR ESTABLISHING HIS OWN TEMPORARY BENCHMARKS ALONG THE PROPOSED PROJECT. PLEASE REFER TO SECTION 01720 FOR ADDITIONAL REQUIREMENTS.

BORING LOG PROFILE LEGEND

PREDOMINANT GRAIN SIZE FROM BORING LOGS. REFER TO SOIL BORING LOGS CONTAINED IN THE BIDDING DOCUMENTS FOR ADDITIONAL DETAILS.



RECORD PLAN

THIS RECORD PLAN WAS PREPARED BASED ON LIMITED INFORMATION GATHERED DURING CONSTRUCTION OF THE PROJECT AND INDICATES ONLY SIGNIFICANT CHANGES MADE FROM THE DESIGN PLANS DURING CONSTRUCTION.

Board of Public Works

Mill Road Sanitary Sewer Project

East Longmeadow,  
Massachusetts


1	12/15/05	RECORD PLAN
Mark	Date	Description
PROJECT NO:	E0451117	
FILE:	E0451117 Mill Road INDEX	
DRAWN BY:	TMF	
CHECKED:	DRP	
APPROVED BY:	RP/MRP	

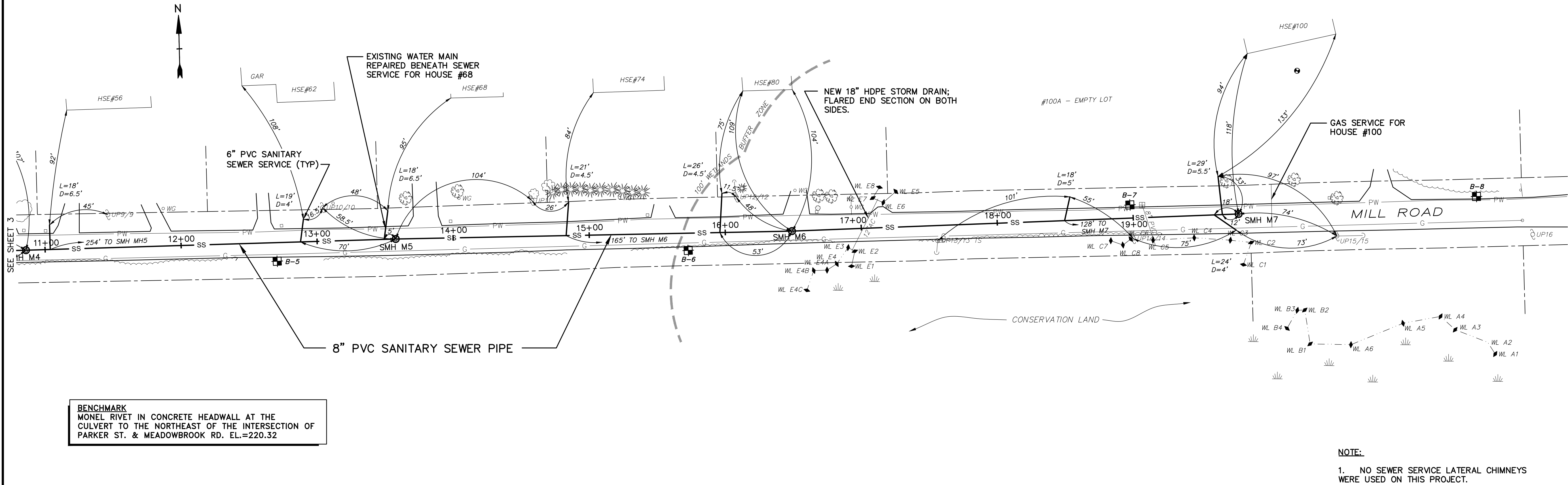
LEGEND, ABBREVIATIONS AND NOTES

SCALE: NONE



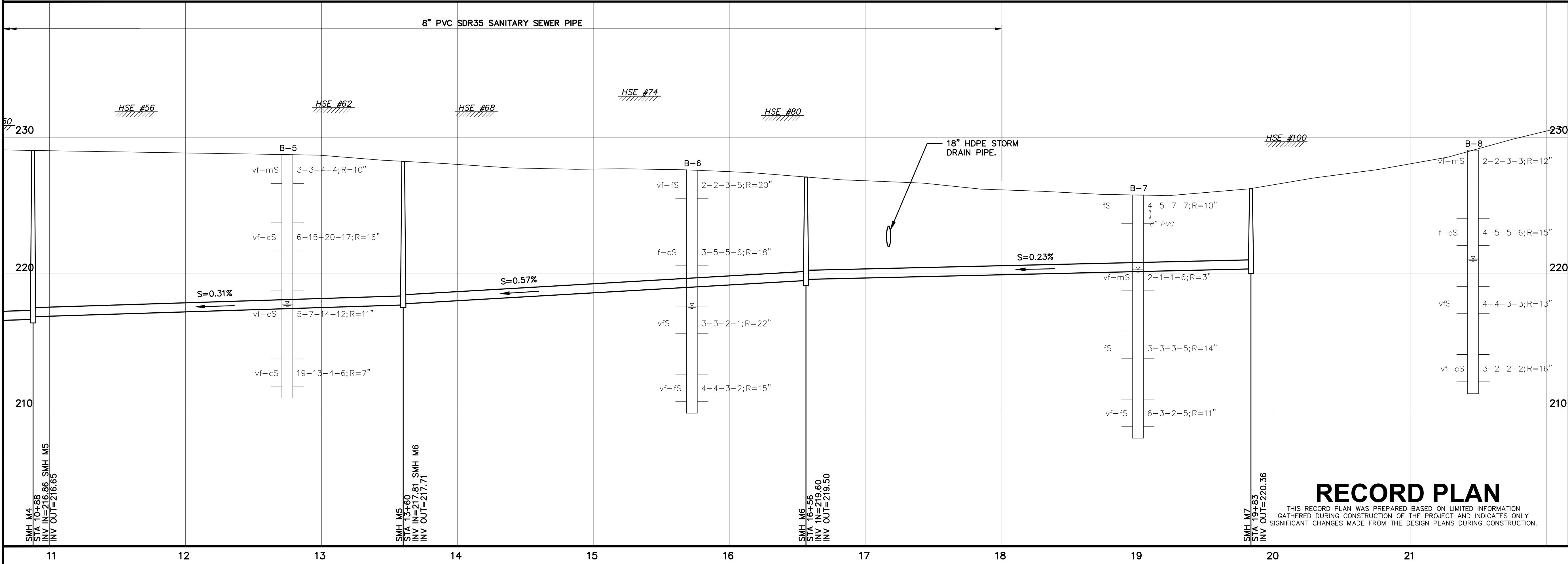
East Longmeadow,  
Massachusetts

1	12/15/05	RECORD PLAN	
Mark	Date	Description	
PROJECT NO:		E045117	
FILE:E0451\Mill Road\PLAN.dwg/SHEET3			
DRAWN BY:	ARG		
CHECKED:	DRP		
APPROVED BY:	RP/MRP		
MILL ROAD STA 0+00 TO STA 11+00			
SCALE:	1"=40 H; 1"=4" V		



**BENCHMARK**  
MONEL RIVET IN CONCRETE HEADWALL AT THE  
CULVERT TO THE NORTHEAST OF THE INTERSECTION OF  
PARKER ST. & MEADOWBROOK RD. EL.=220.32

**NOTE:**  
1. NO SEWER SERVICE LATERAL CHIMNEYS  
WERE USED ON THIS PROJECT.



**RECORD PLAN**

THIS RECORD PLAN WAS PREPARED BASED ON LIMITED INFORMATION  
GATHERED DURING CONSTRUCTION OF THE PROJECT AND INDICATES ONLY  
SIGNIFICANT CHANGES MADE FROM THE DESIGN PLANS DURING CONSTRUCTION.

**Board of Public  
Works**

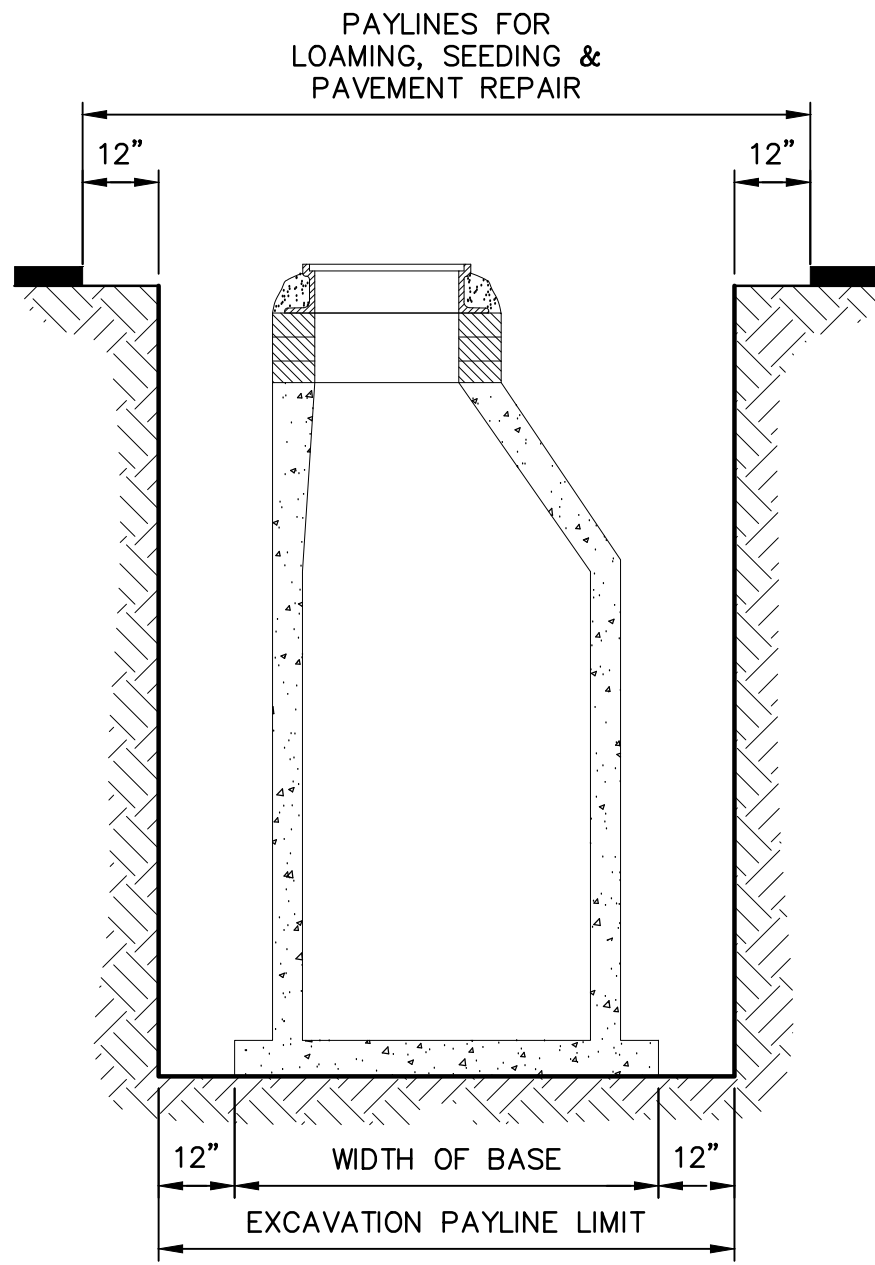
**Mill Road Sanitary  
Sewer Project**

East Longmeadow,  
Massachusetts

1	12/15/05	RECORD PLAN
Mark	Date	Description
PROJECT NO: E0451117		
FILE:E0451117 Mill Road/PLAN.dwg/SHEET4		
DRAWN BY: ARG		
CHECKED: DRP		
APPROVED BY: RP/MP		

MILL ROAD  
STA 11+00 TO STA 18+00

SCALE: 1"=40 H; 1"=4" V

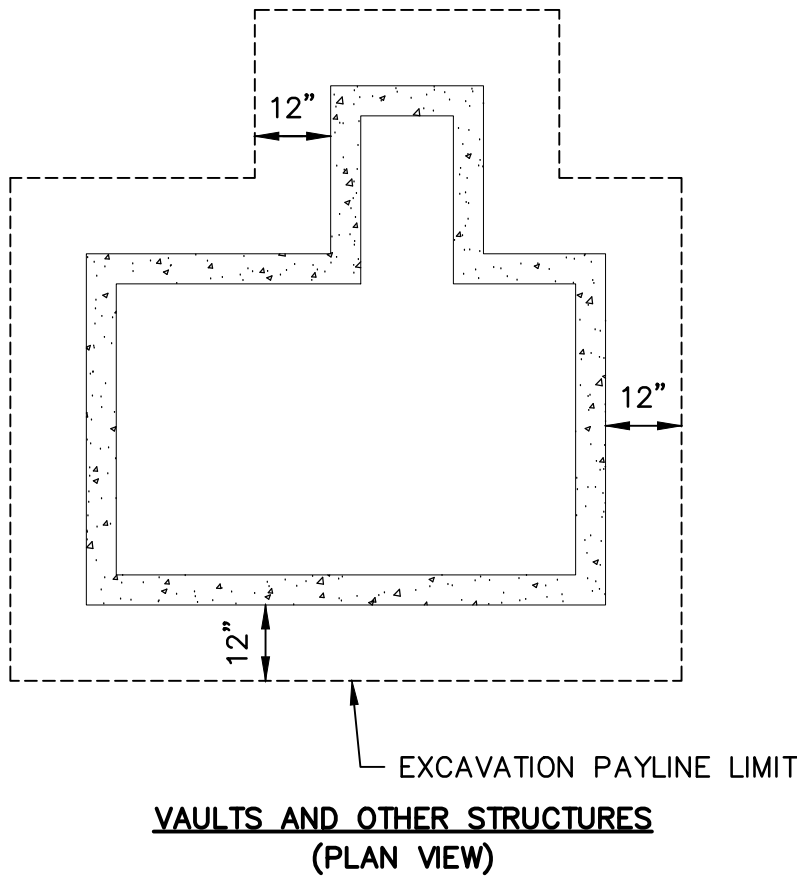


MANHOLE STRUCTURES  
(SECTION VIEW)

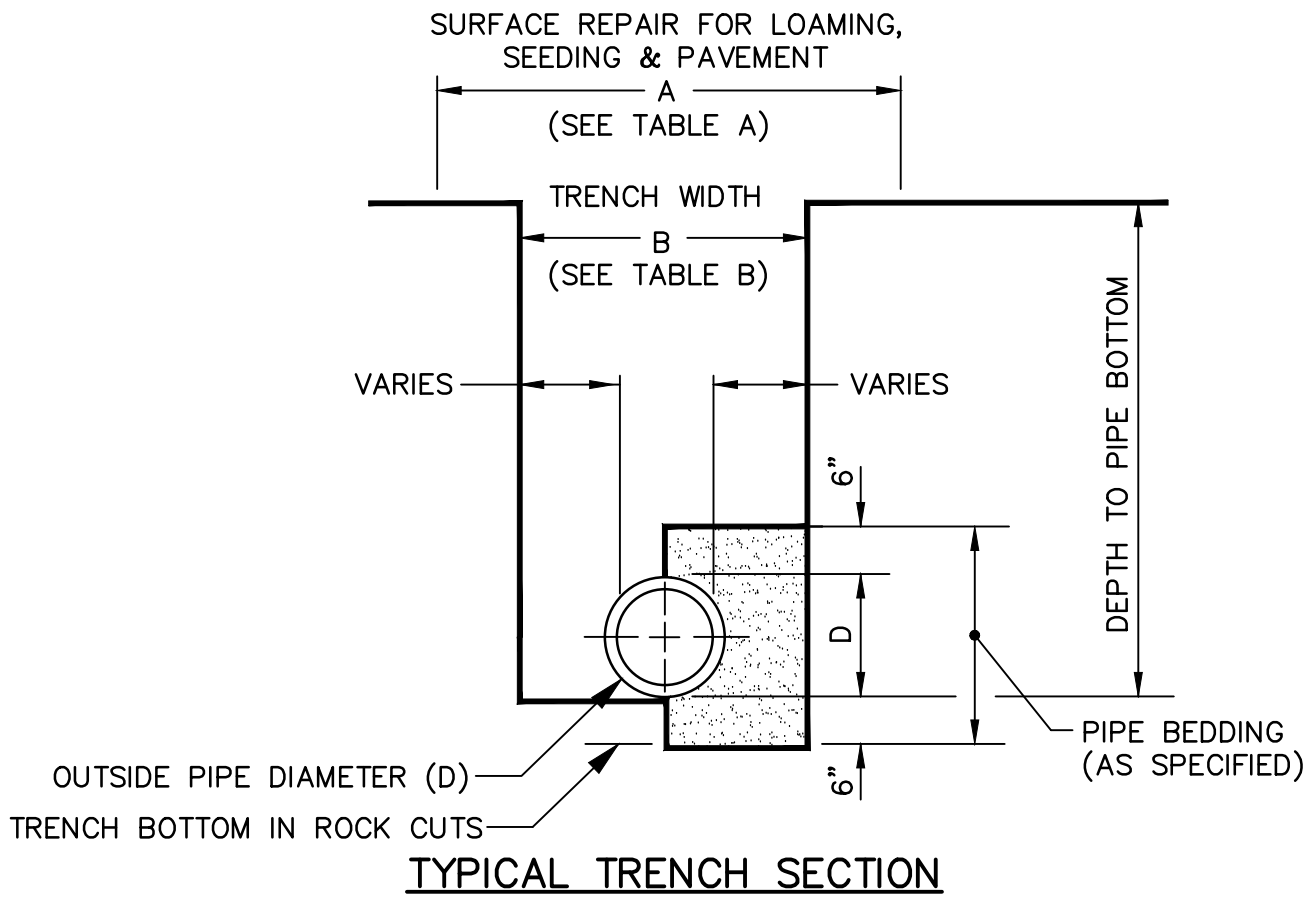
PAYLINES FOR STRUCTURES  
NO SCALE

NOTES:

1. EXCAVATION WILL BE PAID FOR ONCE REGARDLESS OF HOW OFTEN IT FALLS WITHIN THE PAYLINES FOR VARIOUS PIPES AND STRUCTURES DUE TO OVERLAPPING OF PAYLINES, AND REGARDLESS OF HOW OFTEN CONTRACTOR REHANDLES MATERIALS.



VAULTS AND OTHER STRUCTURES  
(PLAN VIEW)



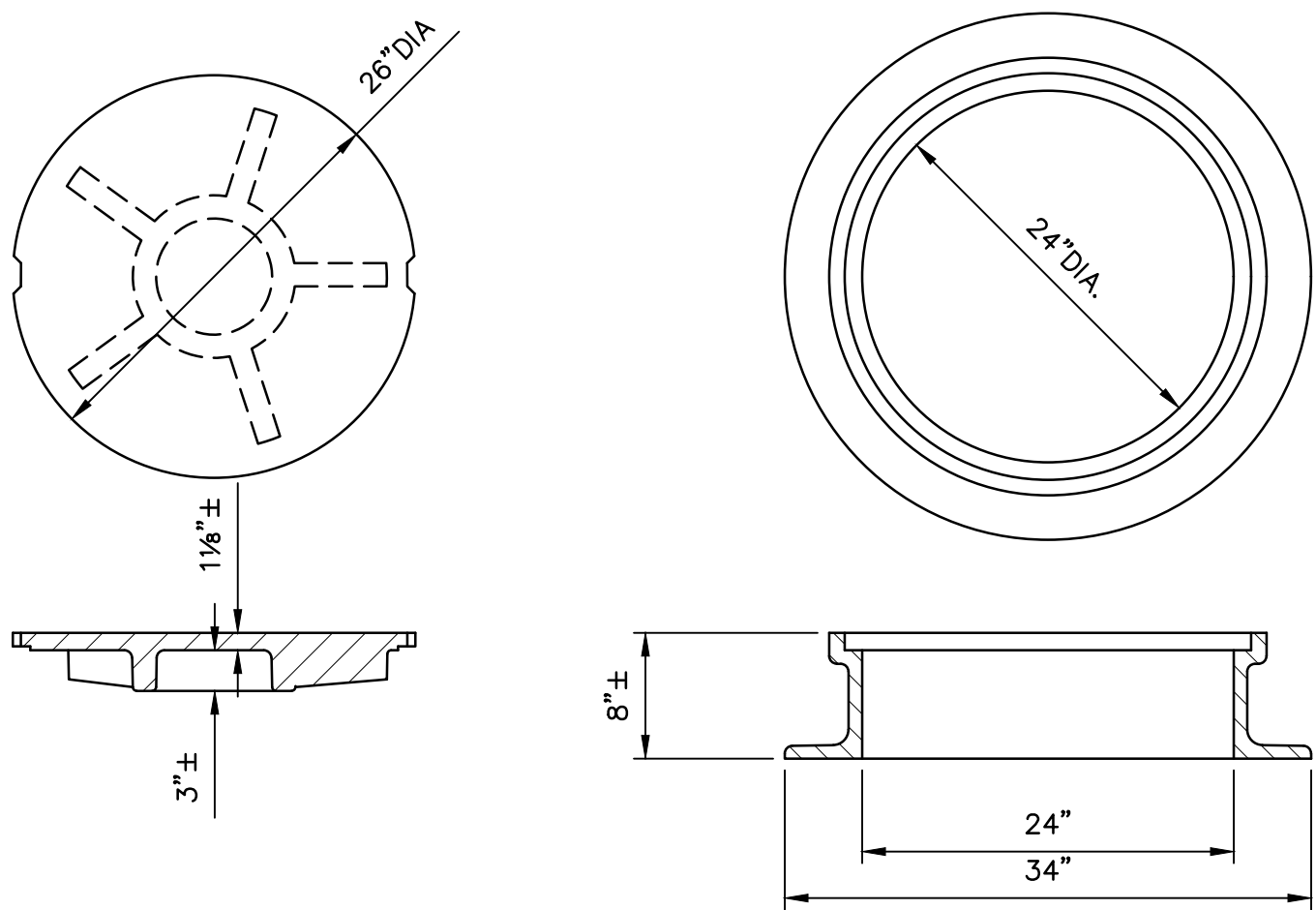
TYPICAL TRENCH SECTION

TABLE A – MAXIMUM SURFACE REPAIR PAY WIDTHS (SEE NOTE)			
OUTSIDE PIPE DIAMETER 0 – 24"		OUTSIDE PIPE DIAMETER GREATER THAN 24"	
TEMPORARY PAVEMENT 6'–6" MAX.	PERMANENT PAVEMENT & LOAMING & SEEDING 8'–6" MAX.	TEMPORARY PAVEMENT D + 4'–0" MAX.	PERMANENT PAVEMENT & LOAMING & SEEDING D + 6'–0" MAX.
TABLE B – MAXIMUM TRENCH EXCAVATION PAY WIDTHS (SEE NOTE)			
OUTSIDE PIPE DIAMETER 0 – 24"		OUTSIDE PIPE DIAMETER GREATER THAN 24"	
5'–0"		D + 3'–0"	

NOTES:

1. THE PAYLINE DIMENSIONS SHOWN REPRESENT THE MAXIMUM PAYLINE LIMITS TO BE PAID. WHEN THE ACTUAL SURFACE REPAIR OR TRENCH WIDTH IS LESS, THE ACTUAL WIDTH SHALL BE PAID FOR AT THE APPLICABLE UNIT PRICE.
2. THE PAYMENT DEPTH FOR ROCK (AS DEFINED HEREIN) WHICH IS ENCOUNTERED IN A TRENCH SHALL NOT BE LESS THAN THREE (3) FEET.

TRENCH PAYLINES  
NO SCALE

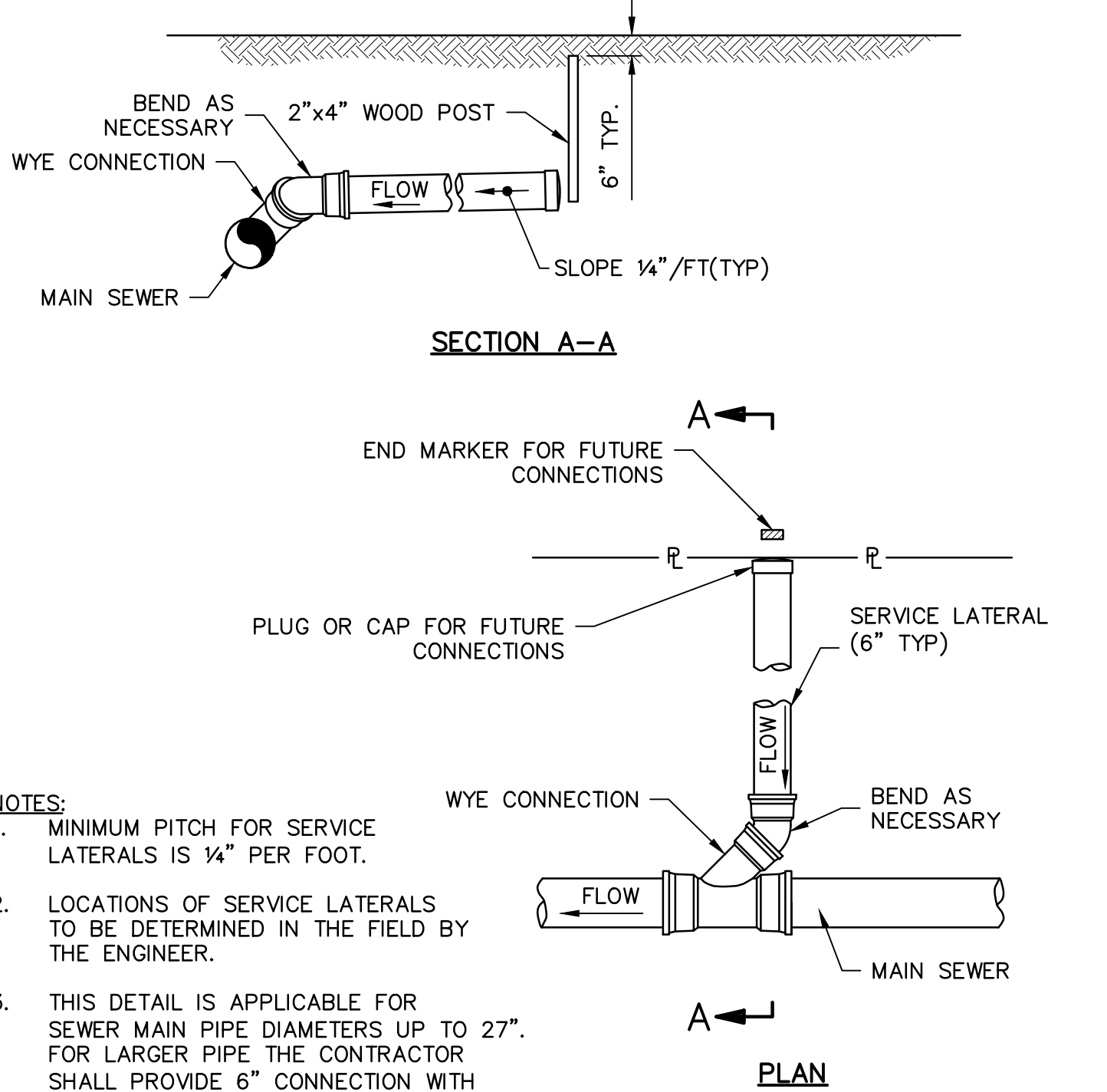


STANDARD MANHOLE COVER  
MINIMUM WEIGHT: 200 LBS.

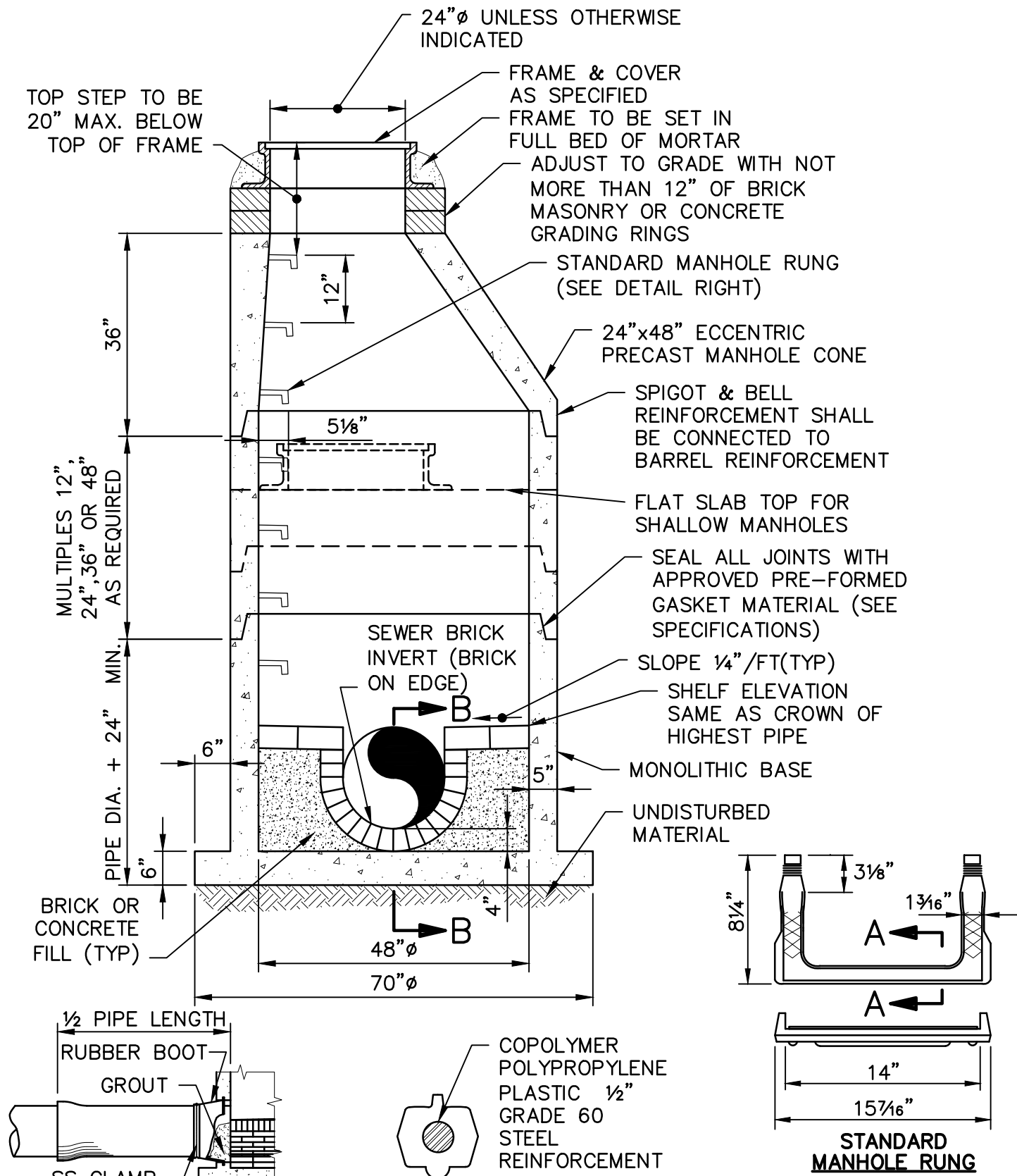
NOTES:

1. FRAME AND COVER SHALL BE PROVIDED FROM THE SAME MANUFACTURER.
2. LETTERING SHALL BE CAST INTO COVERS AS SPECIFIED.

MANHOLE FRAME & COVER  
NO SCALE



SANITARY SERVICE LATERAL  
NO SCALE



48" PRECAST SANITARY SEWER MANHOLE  
NO SCALE

**Board of Public  
Works**

**Mill Road Sanitary  
Sewer Project**

East Longmeadow,  
Massachusetts

1	12/15/05	RECORD PLAN
Mark	Date	Description
PROJECT NO: E0451117		
FILE: E04511 Mill Road, Mill Road DETAILS		
DRAWN BY: TMF		
CHECKED: DRP		
APPROVED BY: RP/MP		

DETAILS 1

SCALE: AS NOTED

SHEET 5

**RECORD PLAN**  
THIS RECORD PLAN WAS PREPARED BASED ON LIMITED INFORMATION GATHERED DURING CONSTRUCTION OF THE PROJECT AND INDICATES ONLY SIGNIFICANT CHANGES MADE FROM THE DESIGN PLANS DURING CONSTRUCTION.

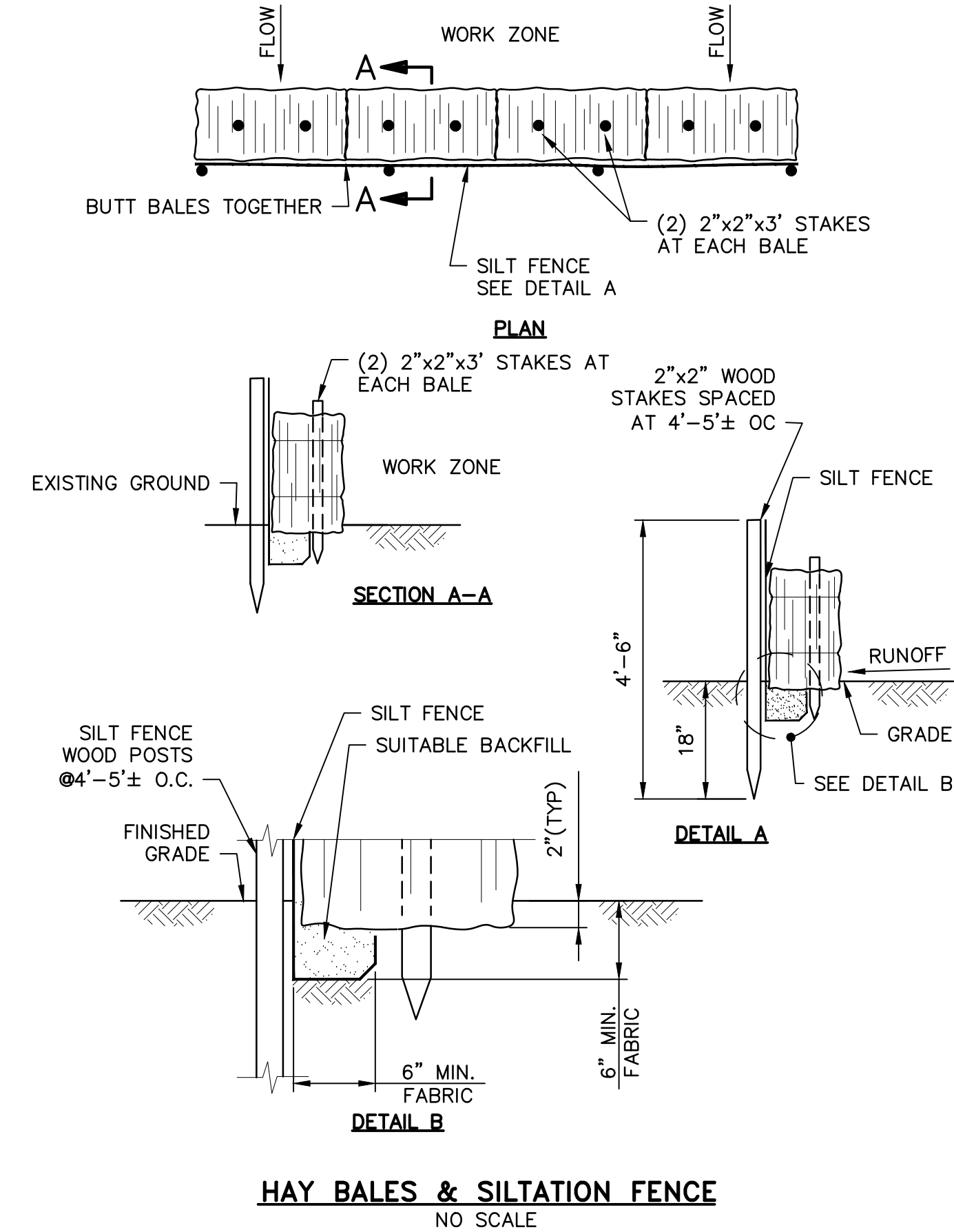
**Board of Public Works**

**Mill Road Sanitary Sewer Project**

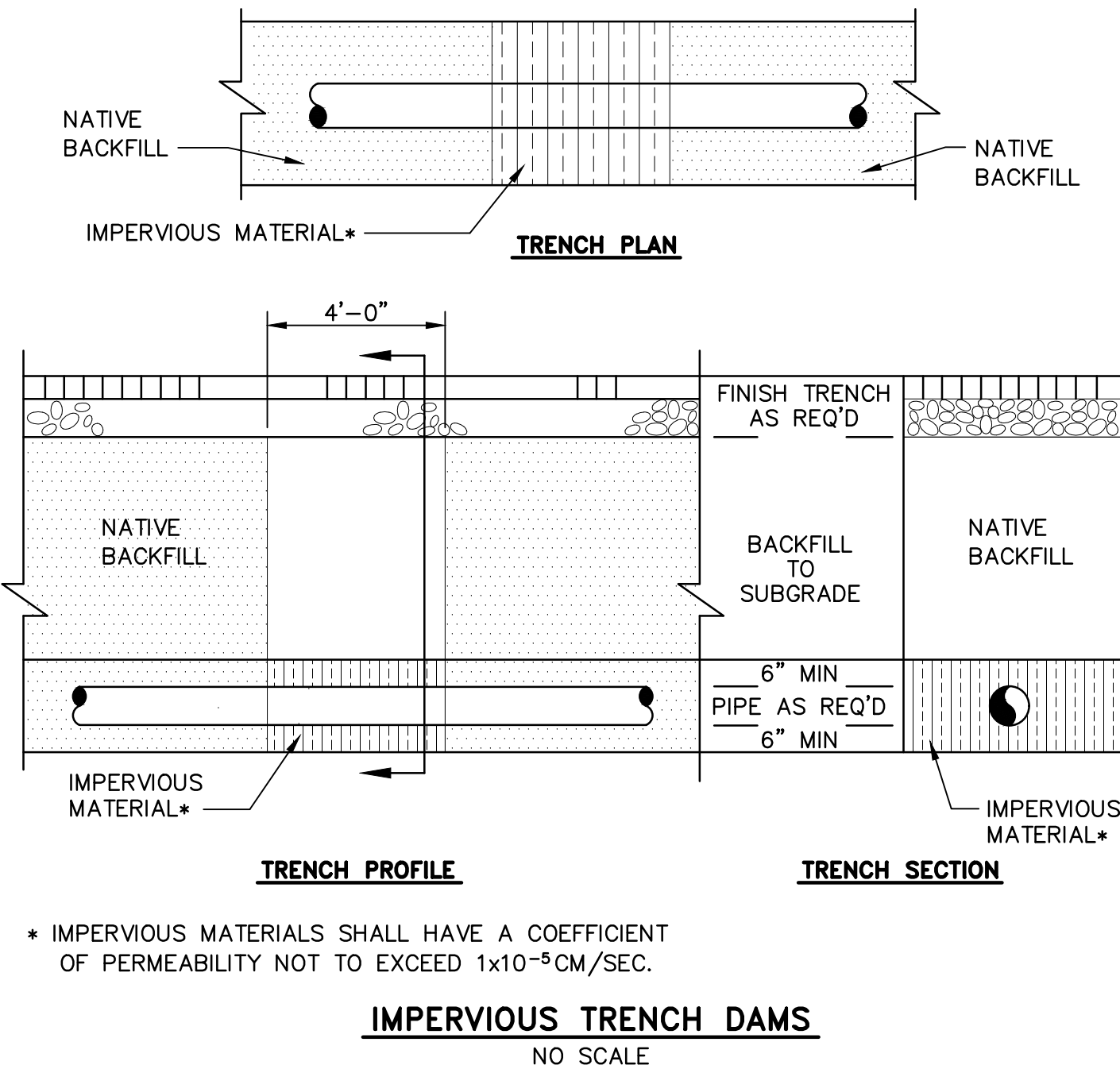
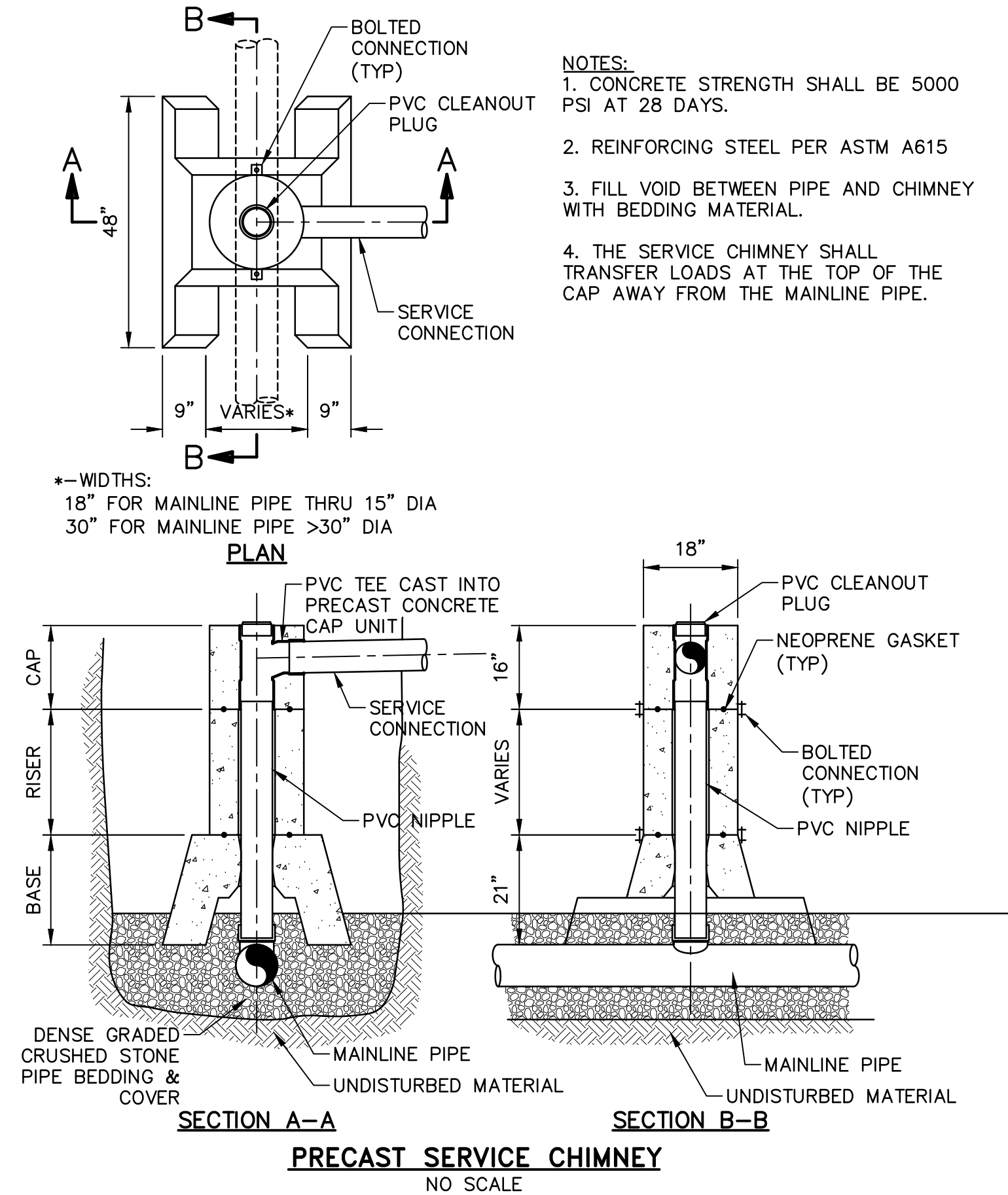
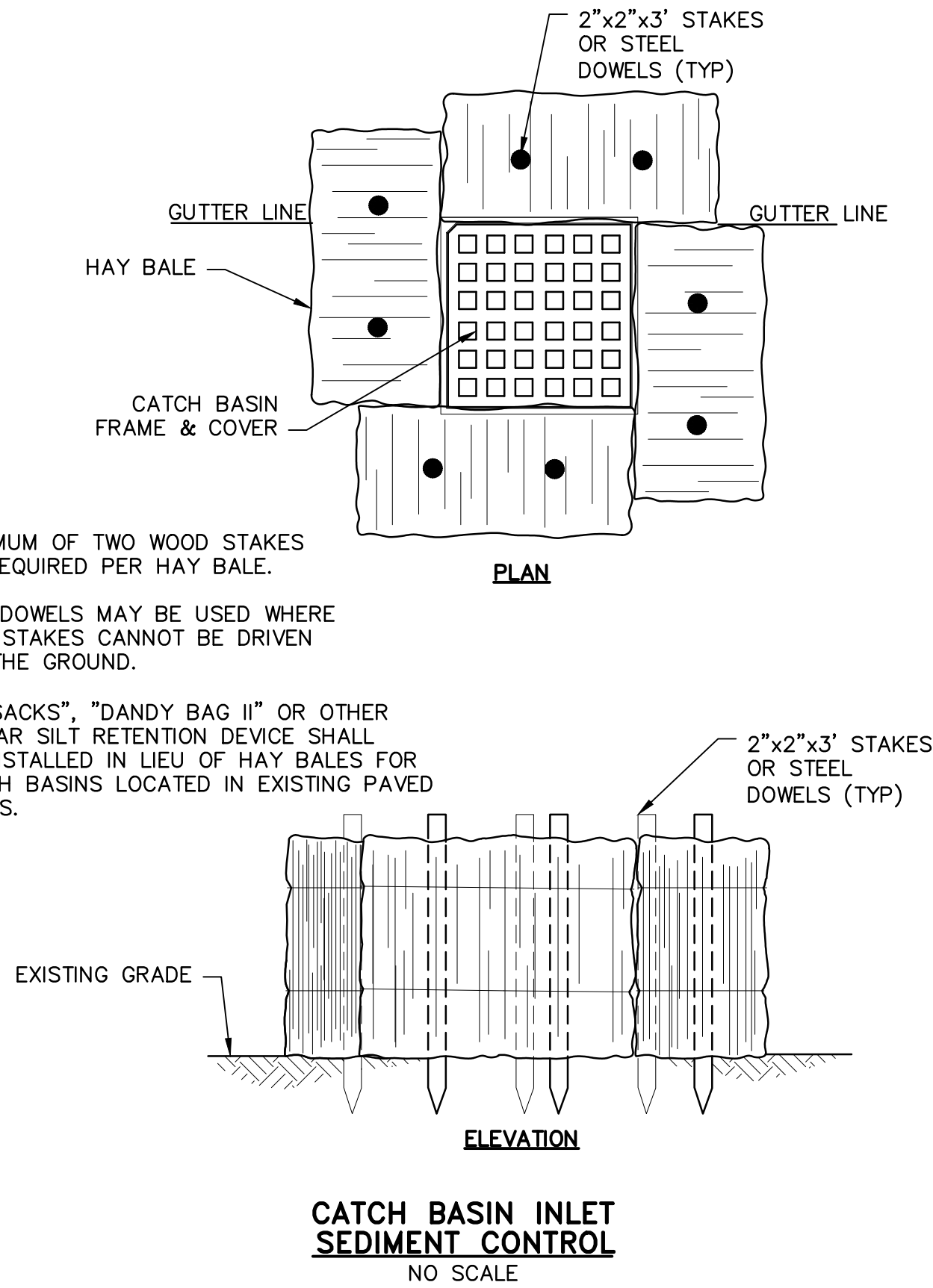
East Longmeadow,  
Massachusetts

1	12/15/05	RECORD PLAN
Mark	Date	Description
PROJECT NO:		E0451117
FILE:E0451117		Mill Road DETAILS
DRAWN BY:		TMF
CHECKED:		DRP
APPROVED BY:		RP/MRP

DETAILS 2
SCALE: AS NOTED



- NOTE:
1. A MINIMUM OF TWO WOOD STAKES ARE REQUIRED PER HAY BALE.
  2. STEEL DOWELS MAY BE USED WHERE WOOD STAKES CANNOT BE DRIVEN INTO THE GROUND.
  3. "SILT SACKS", "DANDY BAG II" OR OTHER SIMILAR SILT RETENTION DEVICE SHALL BE INSTALLED IN LIEU OF HAY BALES FOR CATCH BASINS LOCATED IN EXISTING PAVED AREAS.



**RECORD PLAN**  
THIS RECORD PLAN WAS PREPARED BASED ON LIMITED INFORMATION GATHERED DURING CONSTRUCTION OF THE PROJECT AND INDICATES ONLY SIGNIFICANT CHANGES MADE FROM THE DESIGN PLANS DURING CONSTRUCTION.

GENERAL NOTES:

1. FLAGS SHALL BE AT LEAST 16"x16".
2. DISTANCES ARE A GUIDE AND MAY BE ADJUSTED IN FIELD BY ENGINEER.
3. • = CHANNELIZING DEVICE
4. MAXIMUM SPACING OF CHANNELIZING DEVICES IS EQUAL IN FEET TO SPEED LIMIT.
5. NO TRAFFIC CONTROL DEVICES SHALL REMAIN ON THE ROADWAY AT THE END OF EACH WORK DAY.
6. SIGNS MUST BE COVERED OR REMOVED AT THE END OF EACH WORK DAY, OR WHENEVER BOTH LANES ARE OPEN TO TRAFFIC.
7. ALL WARNING SIGNS SHALL BE BLACK LEGEND ON A REFLECTIVE ORANGE BACKGROUND.
8. ADVISORY SPEED PLATES (W13-1) TO BE USED WHERE APPROPRIATE.
9. ALL TRAFFIC CONTROL DEVICES USED SHALL CONFORM TO THE LATEST EDITION OF THE "FHWA MANUAL ON UNIFORM TRAFFIC CONTROL DEVICES FOR STREETS AND HIGHWAYS" (MUTCD) IN BOTH SPECIFICATION AND APPLICATION.
10. TYPICAL LAYOUTS:

TYPICAL LAYOUT "A" SHALL BE USED WHEN THE TRAVEL WIDTH FROM THE CHANNELING DEVICES TO THE EDGE OF PAVEMENT IS GREATER THAN 22 FEET.

TYPICAL LAYOUT "B" SHALL BE USED WHEN THE TRAVEL WIDTH FROM THE CHANNELING DEVICES TO THE EDGE OF PAVEMENT IS LESS THAN 22 FEET.

TYPICAL LAYOUT "C" SHALL BE USED FOR ALL INTERSECTIONS, WHETHER OR NOT THE PROPOSED WATER OR SEWER LINE CROSSES THE INTERSECTION.
11. FOR TYPICAL LAYOUT B & C THE CONTRACTOR SHALL MAINTAIN ONE OPEN TRAVEL LANE OF NOT LESS THAN 12 FEET AT ALL TIMES.
12. THE WORK ZONE AS SHOWN ON THESE PLANS IS REPRESENTATIVE ONLY AND MAY VARY IN BOTH LENGTH AND LOCATION AS CONSTRUCTION PROGRESSES. REGARDLESS OF THESE VARIATIONS, THE OFFSET DISTANCES TO THE TRAFFIC CONTROL DEVICES SHOWN SHALL BE MAINTAINED.
13. NO CONSTRUCTION EQUIPMENT OR MATERIALS (EXCEPT THOSE IN USE) SHALL BE STORED CLOSER THAN 8 FEET TO THE EDGE OF TRAVELLED LANES.
14. ALL OPERATIONS SHALL BE CONDUCTED SO AS NOT TO INTERFERE WITH, INTERRUPT, OR ENDANGER THE GENERAL PUBLIC OR THE TRAFFIC FLOW.
15. THE NUMBER AND LOCATION OF ALL SIGNS AND DEVICES SHALL BE AS DEEMED NECESSARY BY THE ENGINEER FOR THE SAFE AND EFFICIENT PERFORMANCE OF THE WORK AND THE SAFETY OF THE TRAVELING PUBLIC. ALL WARNING DEVICES SHALL BE SUBJECT TO REMOVAL, REPLACEMENT AND/OR REPOSITIONING BY THE CONTRACTOR AS OFTEN AS DEEMED NECESSARY BY THE ENGINEER.
16. ALL PERSONNEL WHO ARE WORKING ON THE TRAVELLED WAY OR BREAKDOWN LANES AND WHO ARE NOT PROTECTED BY TRAFFIC CONES OR SIMILAR PROTECTIVE DEVICES SHALL WEAR SAFETY VESTS.
17. NO TRENCH SHALL BE LEFT OPEN OVERNIGHT. IF IT BECOMES NECESSARY FOR SAID TRENCH TO BE LEFT OVERNIGHT, THEN IT SHALL BE COVERED WITH STEEL PLATES.

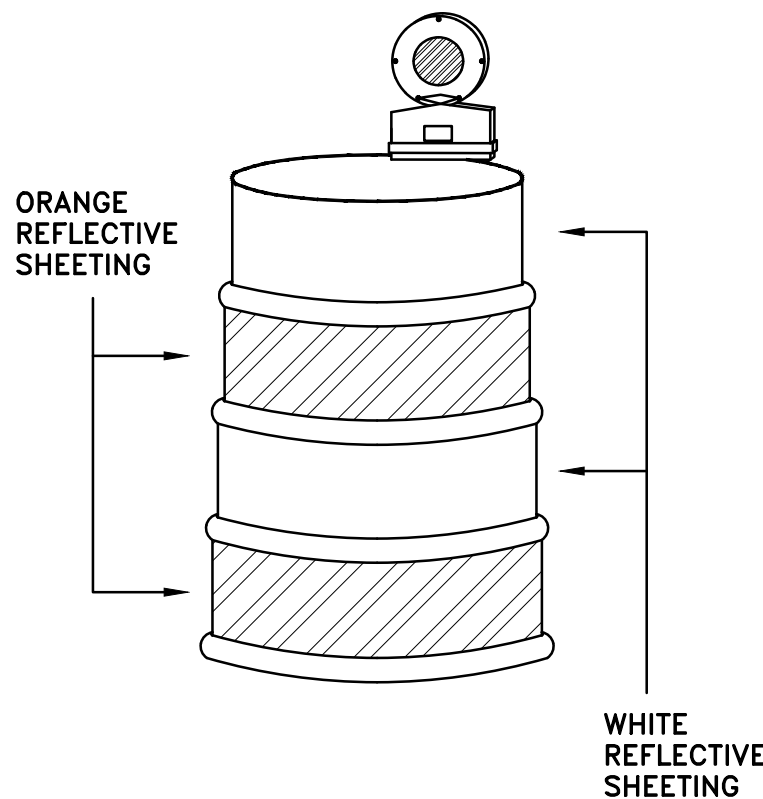
PLASTIC DRUMS

ITEM NO. DESCRIPTION

859. — REFLECTORIZED DRUM
- 859.1 — REFLECTORIZED DRUM WITH FLASHER (TYPE A) – USED TO CONTINUALLY WARN DRIVERS THAT THEY ARE APPROACHING OR PROCEEDING IN A HAZARDOUS AREA (SEE MUTCD SECT. 6E4.6E5)

NOTES:

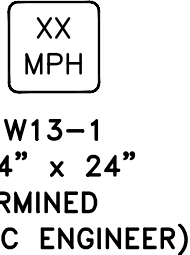
1. DRUM DESIGN AND APPLICATION SHALL BE AS PER THE CURRENT EDITION OF THE MUTCD.
2. DRUMS SHALL BE APPROXIMATELY 36" IN HEIGHT, HAVING A MINIMUM WALL THICKNESS OF 3/32" AND A MINIMUM DIAMETER OF 18" REGARDLESS OF ORIENTATION.
3. DRUM MATERIAL MUST BE APPROVED U.V. RESISTANT, LOW DENSITY, IMPACT RESISTANT, LINEAR POLYETHYLENE (OR APPROVED EQUIVALENT). METAL DRUMS ARE PROHIBITED FROM USE ON ALL STATE HIGHWAY PROJECTS.
4. SHEETING SHALL BE APPROVED ORANGE AND WHITE TYPE IV REFLECTORIZED SHEETING CONFORMING TO M.9.30.0.
5. ALL DRUMS SHALL BE WELL MAINTAINED INCLUDING REMOVAL OF DUST OR ROAD FILM, SO AS NOT TO REDUCE REFLECTIVE EFFICIENCY. WHEN A DRUM LOSES TARGET VALUE IT SHALL BE REPLACED.
6. WHEN A DRUM IS NO LONGER NEEDED IT SHALL BE STORED IN A DRUM STORAGE AREA, UNLESS IT IS REQUIRED FOR FUTURE USE WITHIN A FIVE DAY PERIOD, IN WHICH CASE IT MAY BE STORED ON LOCATION.



①



②



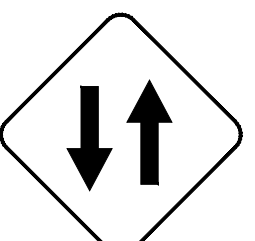
③



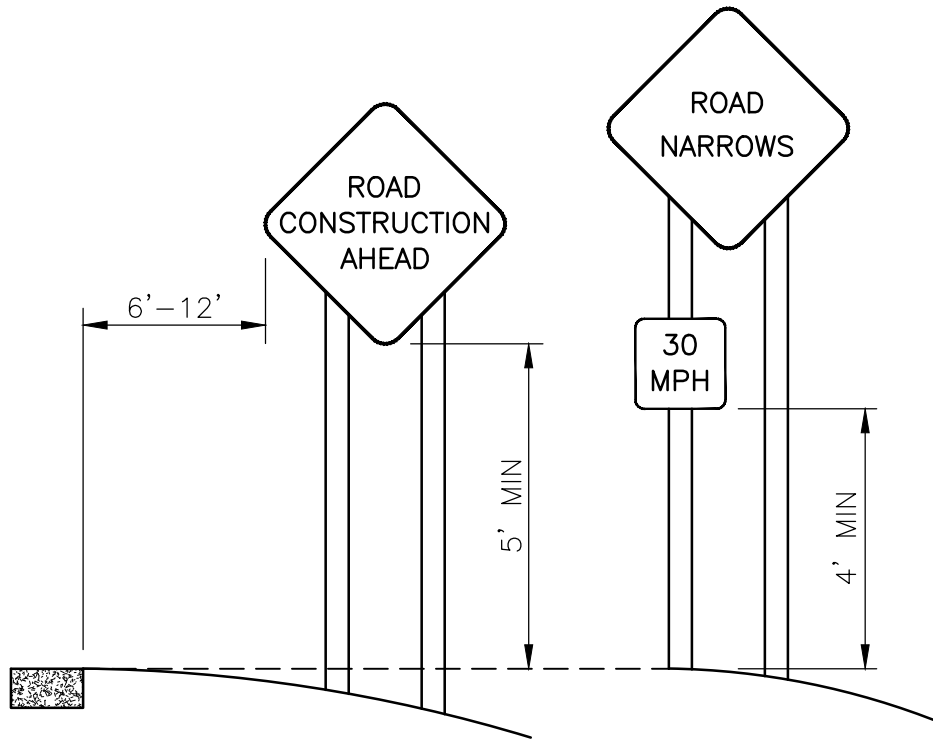
④



⑤



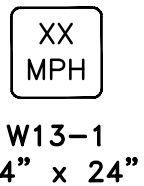
⑥



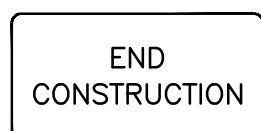
TYPICAL INSTALLATION OF PROJECT SIGNS



⑦



⑧



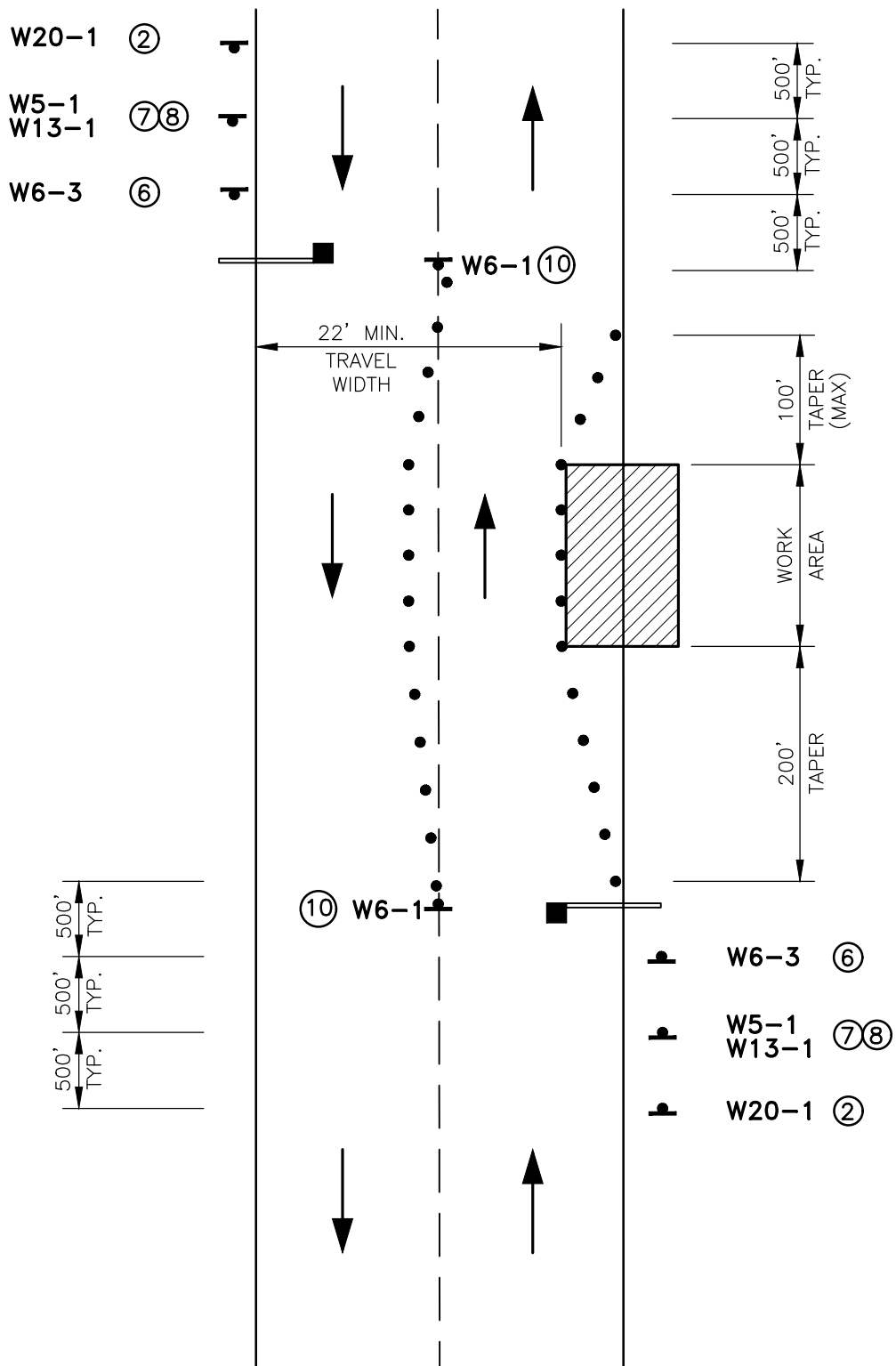
⑨

LEGEND

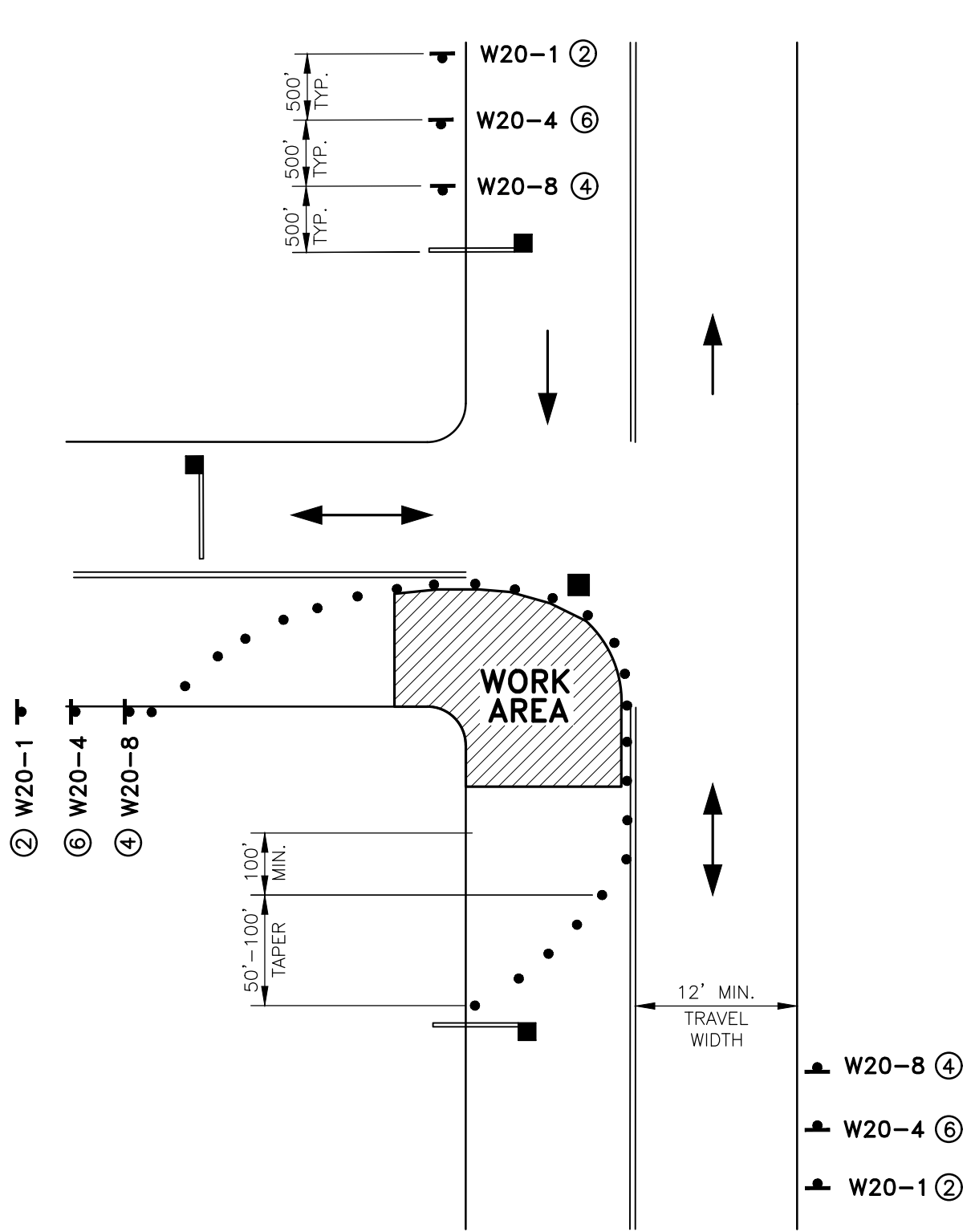
- • • • TRAFFIC CONES/DRUMS (CHANNELING DEVICE)
- TRAFFIC OFFICER
- BARRICADE
- ▲ SIGN
- ▨ WORK AREA
- ↔ TWO WAY TRAFFIC FLOW—SINGLE LANE WITH TRAFFIC CONTROL
- TWO WAY TRAFFIC FLOW—TWO LANES

WORK AREA SIGNS

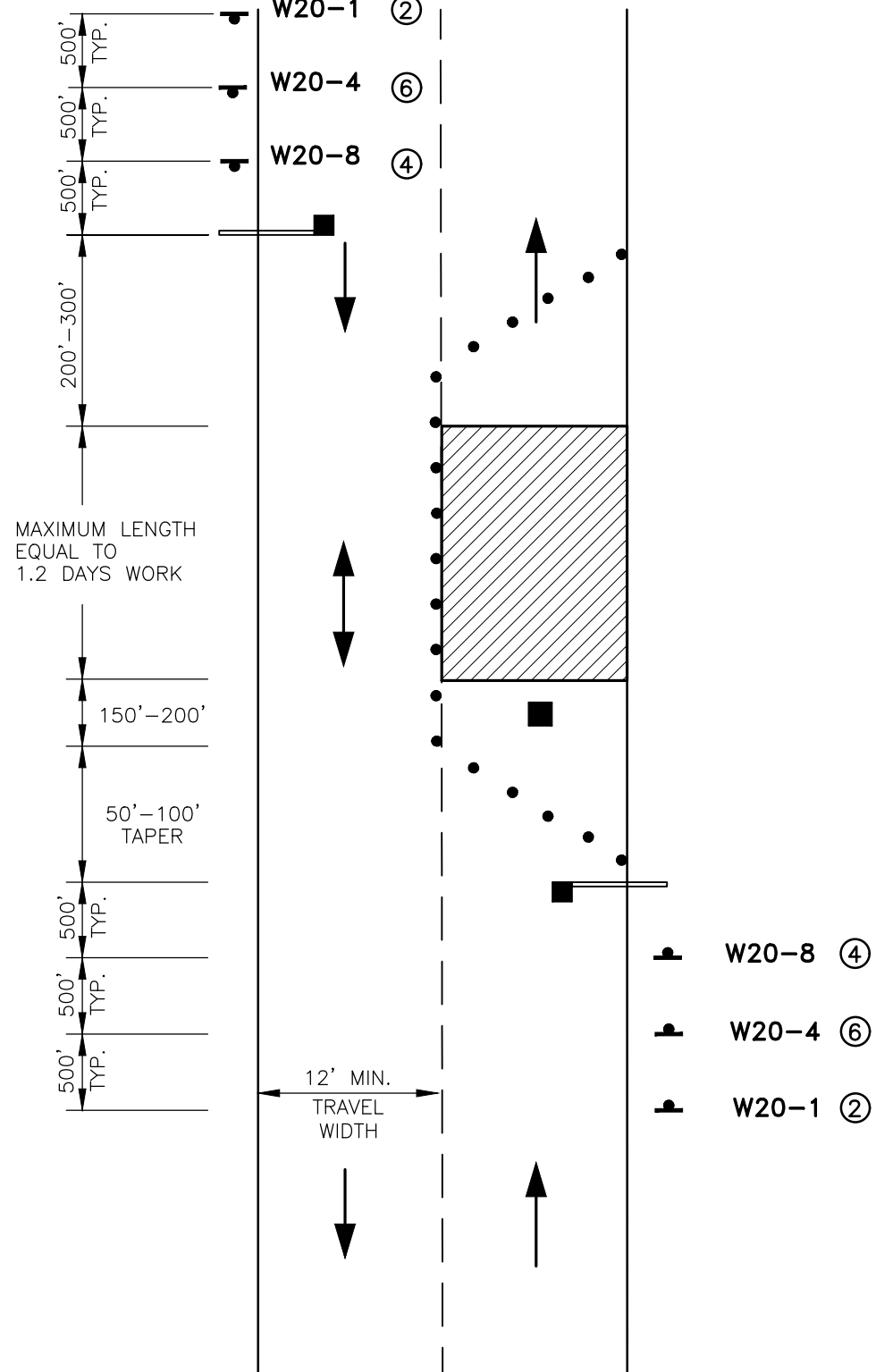
TYPICAL LAYOUT "A"  
TWO OPERATING LANES



TYPICAL LAYOUT "C"  
INTERSECTION LANE CLOSURE  
WHEN WORKING AT A CORNER  
WITHIN AN INTERSECTION



TYPICAL LAYOUT "B"  
TWO LANE ROADWAY  
WITH ONE LANE CLOSED



RECORD PLAN

THIS RECORD PLAN WAS PREPARED BASED ON LIMITED INFORMATION GATHERED DURING CONSTRUCTION OF THE PROJECT AND INDICATES ONLY SIGNIFICANT CHANGES MADE FROM THE DESIGN PLANS DURING CONSTRUCTION.

Tighe&Bond

Consulting Engineers  
53 Southampton Road  
Westfield, Massachusetts  
(413) 562-1600  
www.tighebond.com

Board of Public  
Works

Mill Road Sanitary  
Sewer Project

East Longmeadow,  
Massachusetts

1	12/15/05	RECORD PLAN
Mark	Date	Description
PROJECT NO: E0451117		
FILE:E0451117 Mill Road TOPLAN		
DRAWN BY: TMF		
CHECKED: DRP		
APPROVED BY: RPI/MP		

TRAFFIC CONTROL PLAN

SCALE: NOT TO SCALE

SHEET 7