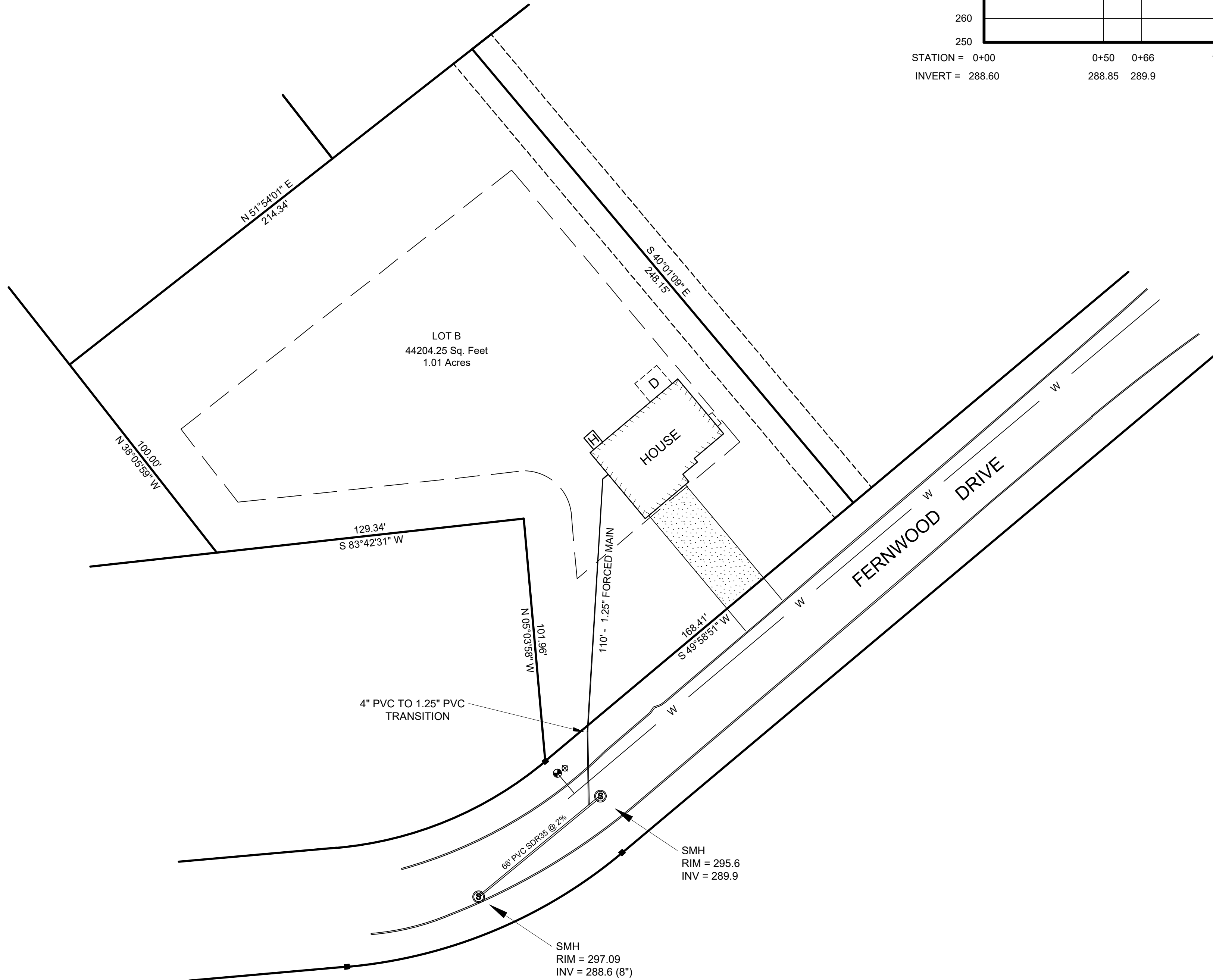


CONSTRUCTION NOTES

- UNDERGROUND UTILITIES SHOWN HEREON ARE BASED UPON SURFACE FEATURES AS LOCATED BY SURVEY AND AVAILABLE RECORD DATA AND ARE APPROXIMATE. ACTUAL FIELD LOCATIONS SHOULD BE VERIFIED WITH THE APPROPRIATE UTILITY COMPANY AND/OR MUNICIPAL DEPARTMENT PRIOR TO CONSTRUCTION.
- CONTRACTOR TO NOTIFY DIG SAFE A MINIMUM OF 72 HOURS PRIOR TO START OF CONSTRUCTION ACCORDING TO MASSACHUSETTS GENERAL LAWS.
- APPROVED PLANS TO BE ON SITE AT ALL TIMES.
- CHANGES TO THIS PLAN MAY OCCUR AS UNFORSEEN CONDITIONS ARISE. ALL CHANGES TO BE APPROVED BY DESIGN ENGINEER, FIELD INSPECTOR AND CITY ENGINEER.
- CONTRACTOR SHALL BE RESPONSIBLE FOR THE MAINTENANCE AND SAFETY OF TRAFFIC ON THE PUBLIC AND PRIVATE WAYS AFFECTED BY THE CONSTRUCTION OF THIS PROJECT.
- CONTRACTOR SHALL PROTECT ALL SLOPES, VEGETATION, PAVING, WALKS, AND IMPROVEMENTS OUTSIDE THE AREAS TO BE AFFECTED BY THE CONSTRUCTION OF THIS PROJECT.
- TREES, BRUSH AND STUMPS REMOVED BY CLEARING AND GRUBBING OPERATIONS SHALL BE TRANSPORTED OFF THE PROJECT SITE TO AN APPROVED DISPOSAS LOCATION.
- CALCIUM CHLORIDE/WATER FOR DUST CONTROL TO BE AVAILABLE AT ALL TIMES.
- ALL PAVEMENT MARKINGS CHANGED, ALTERED OR REMOVED SHALL BE REAPPLIED.
- CONTRACTOR TO SCHEDULE A PRE-CONSTRUCTION CONFERENCE WITH THE D.P.W. AND OTHER REQUIRED UTILITIES
- PIPE TO BE BEDDED IN 6 INCHES OF ¾" STONE AND COVERED WITH ¾" CRUSHED STONE. TOP OF STONE TO BE COVERED WITH FILTER FABRIC. STONE TO BE USED TO THE LIMITS OF TOWN-OWNED PROPERTY. CLEAN SAND FILL MAY BE USED ON PRIVATE PROPERTY.
- CONTRACTOR TO SECURE REQUIRED PERMITS FROM THE DEPARTMENT OF PUBLIC WORKS PRIOR TO THE COMMENCEMENT OF CONSTRUCTION.



NOTE:

- SIZE AND DEPTH OF EXISTING WATER MAIN IN FERNWOOD DRIVE TO BE DETERMINED PRIOR TO ANY EXCAVATION TO DETERMINE ANY CONFLICTS WITH THIS DESIGN.
- ALL MATERIALS AND CONSTRUCTION METHODS TO COMPLY WITH THE STANDARDS OF THE EAST LONGMEADOW DPW.
- CONTRACTOR TO FIELD VERIFY ALL INVERTS PRIOR TO CONSTRUCTION.

**AS-BUILT SEWER MAIN EXTENSION
& SEWER CONNECTION**

LOT B FERNWOOD DRIVE
EAST LONGMEADOW, MA
OWNED BY

BRETTA CONSTRUCTION, LLC.



DATE: 1/30/2025

SCALE: 1" = 30'

**SMITH ASSOCIATES
SURVEYORS, INC.**

46 B BALDWIN STREET - EAST LONGMEADOW, MA 01028 - P:(413) 525-8801 F: (413) 525-8841
SMITHASSOCIATESURVEYORS@HOTMAIL.COM WWW.SMITHASSOCIATESURVEYORS.COM