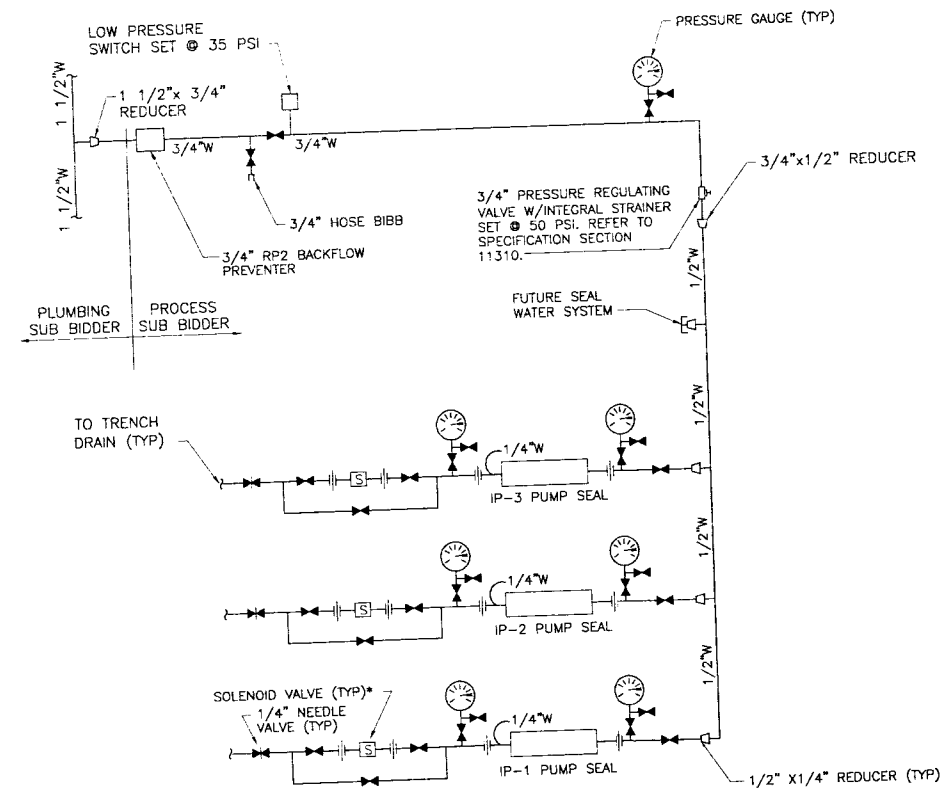


- NOTES:**
1. CONTRACTOR TO PROVIDE EXTENSION FOR EACH MOTOR SO THAT THE MOTOR IS ABOVE THE COVER PLATE ELEVATION.
  2. CONTRACTOR TO FIELD VERIFY THE EXISTING DIMENSIONS OF THE CHANNEL GRINDER PRIOR TO THE PLACEMENT OF CONCRETE FOR THE HEADWORKS.



- NOTES:**
1. • INTERLOCK SOLENOID VALVE TO INFLUENT PUMP TO OPEN WHEN PUMP IS RUNNING.
  2. REFER TO DRAWING P-2 FOR PLUMBING CONNECTIONS.
  3. CONTRACTOR TO COORDINATE THE LAYOUT OF THE SEAL WATER PIPING WITH THE PLUMBING SUBCONTRACTOR AND THE LOCATION OF THE INFLUENT PUMPS.

SEAL WATER PUMPING SYSTEM SCHEMATIC  
NTS

**THESE RECORD DRAWINGS HAVE BEEN PREPARED, IN PART, ON THE BASIS OF THE INFORMATION  
OBTAINED FROM THE FIELD OFFICE AND ARE NOT TO BE CONSIDERED AS A FINAL RESULT.  
THEY ARE FOR YOUR INFORMATION ONLY.**

DEPARTMENT OF PUBLIC WORKS  
TOWN OF EAST LONGMEADOW, MA  
VINELAND AVENUE PUMP STATION  
CONTRACTS NO. 1 AND NO. 2

DWG PR-3

32 OF 49

NO.	REVISIONS	DATE	DESCRIPTION
1	RECORD DRAWINGS 12/04		PROPOSED IMPROVEMENTS
2			STANDARD FOR REVIEW 12-02
3			STANDARD FOR BIDDING 2-03
4			INLET LOCATION
5			LAST MODIFIED ON
6			PERIOD

DRAWN BY SJM/TAP  
CHECKED BY SCH  
DATE 12-19-02  
APPROVED BY SCH  
DATE 1-31-03  
BOOK NO. \_\_\_\_\_  
PROJECT NO. 7051K  
SCALE AS NOTED



**Wright-Pierce**  
169 Main Street 700 Plaza Middlesex  
Middletown, Connecticut USA 06457  
TEL (860) 343-8297 FAX (860) 343-9504

## SECTIONS