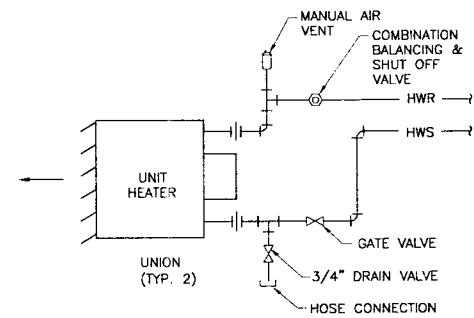
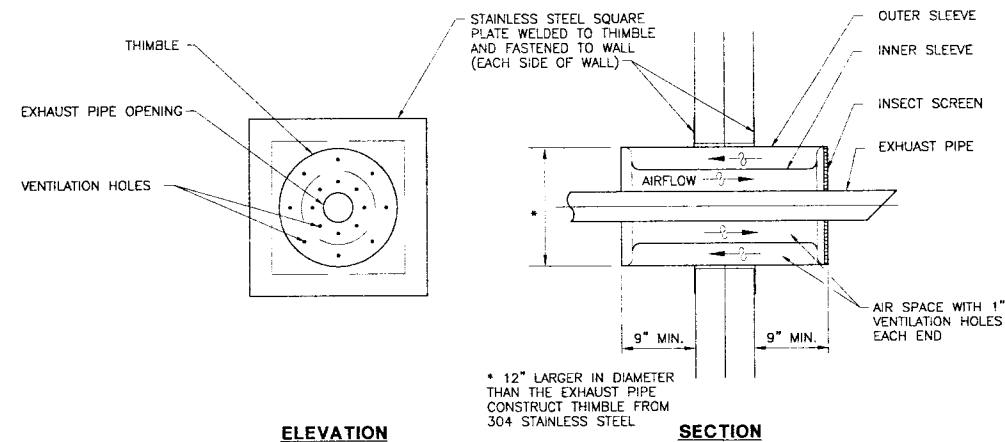


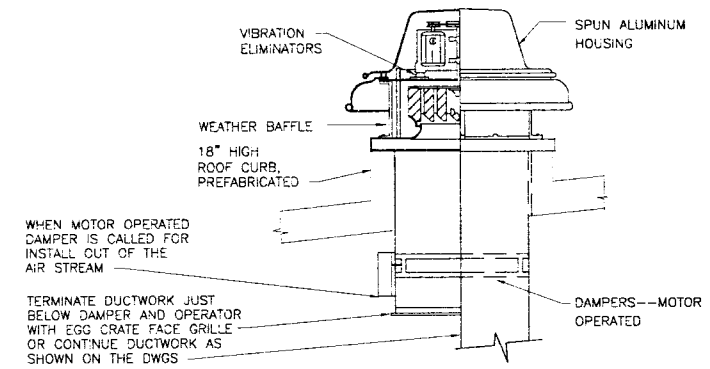
BOILER/HEATING SYSTEM PIPING DIAGRAM



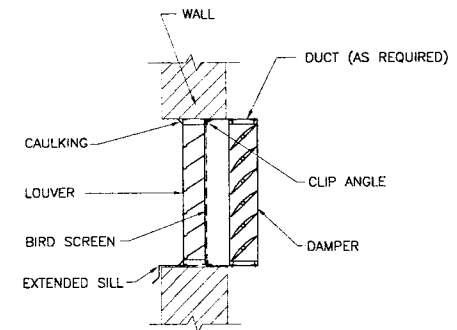
UNIT HEATER PIPING DETAIL
NTS



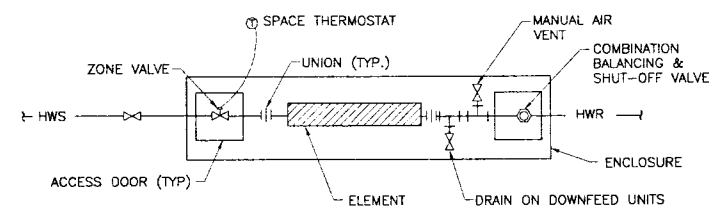
THRU WALL THIMBLE
NTS



CENTRIFUGAL ROOF VENTILATOR DETAIL
NTS

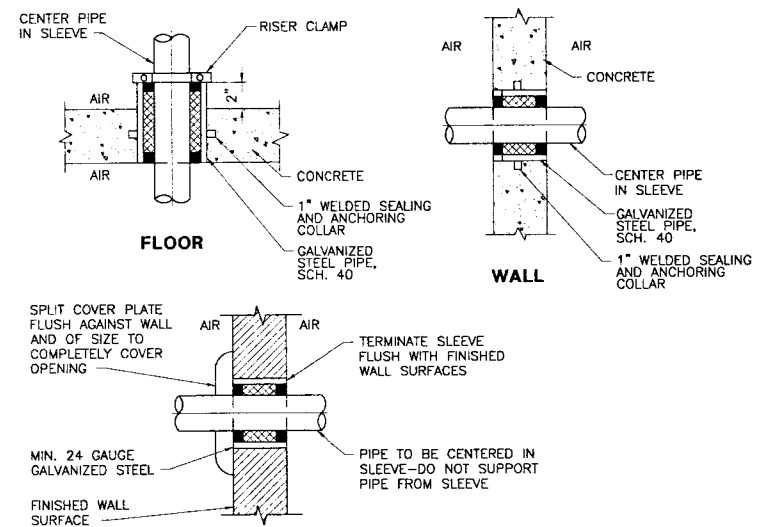


LOUVER & DAMPER DETAIL
NTS



- NOTES:
1. PROVIDE ECCENTRIC REDUCERS & DIELECTRIC FITTINGS AT THE ELEMENT AS REQUIRED DUE TO PIPE MATERIAL AND SIZE DIFFERENCES
 2. PROVIDE ACCESS DOOR ON EACH END OF ENCLOSURE
 3. MOUNT BOTTOM OF ENCLOSURE 4" ABOVE FINISHED FLOOR

RADIATION PIPING DETAIL



NON-BEARING PARTITION

- NOTE: PROVIDE MINIMUM 1/4" ANNULAR SPACE
BETWEEN SLEEVE AND PIPE, PACK WITH
OAKUM AND SEAL ENDS WITH SEALANT
PER SPEC. SECTION 15092
(PROVIDE FIRE RATED SEALANT IN FIRE
RATED WALLS)

PIPING SLEEVE DETAILS
(SEE SPECIFICATION SECTION 15092)
NTS

[illegible]