


<ul style="list-style-type: none">● Active Sewer Manhole● Abandoned Sewer Manhole➤ Sewer Connection■ Other Features■ Wet Well■ Pump Station● Other Fittings	<ul style="list-style-type: none">● Bend fitting➤ Tee Wye; Tee fitting; Wye fitting● Cap fitting● Clean-out fitting■ Chimney fitting● Reducer➤ Sewer Lateral➤ Gravity Sewage Main➤ Forced Sewage Main	<ul style="list-style-type: none">➤ Abandoned Gravity Sewage Main➤ Abandoned Forced Sewage Main■ Concrete Encasement■ Steel Sleeve■ DI Sleeve■ Catch Basin■ Undigitized Catch Basin▲ Other Drain Features	<ul style="list-style-type: none">● Capped End▲ Flared End Structure■ Headwall; Endwall■ Rip-rap● Drain Manholes● Outfalls➤ Drain Line➤ Open Channel➤ Culvert	<ul style="list-style-type: none">■ Detention Basin■ Drain Easement● Hydrant■ Other Water Fitting● Bend Fitting● Cap Fitting	<ul style="list-style-type: none">● Cross Fitting● Plug Fitting● Increaser; Reducer■ Tap Fitting● Tee Fitting● Coupling● Other Water Valve● Gate Valve● Butterfly Valve● Blow Off Valve	<ul style="list-style-type: none">● Other Service Valve● Gate Valve● Butterfly Valve● Blow Off Valve● Other Water Feature■ Thrust Protection	<ul style="list-style-type: none">■ Water Meter Pit■ Water Pumping Station■ Fire Pump■ Sample Station● Water tank■ Water Main■ Abandoned / Inactive Water Main■ Proposed Water Main	<ul style="list-style-type: none">■ Abandoned Water Lateral■ Proposed Water Lateral■ Water Lateral■ Water Easement■ Easement Boundaries■ Break Out Tanks● LNG's■ Pipelines
---	---	--	---	---	--	---	--	---

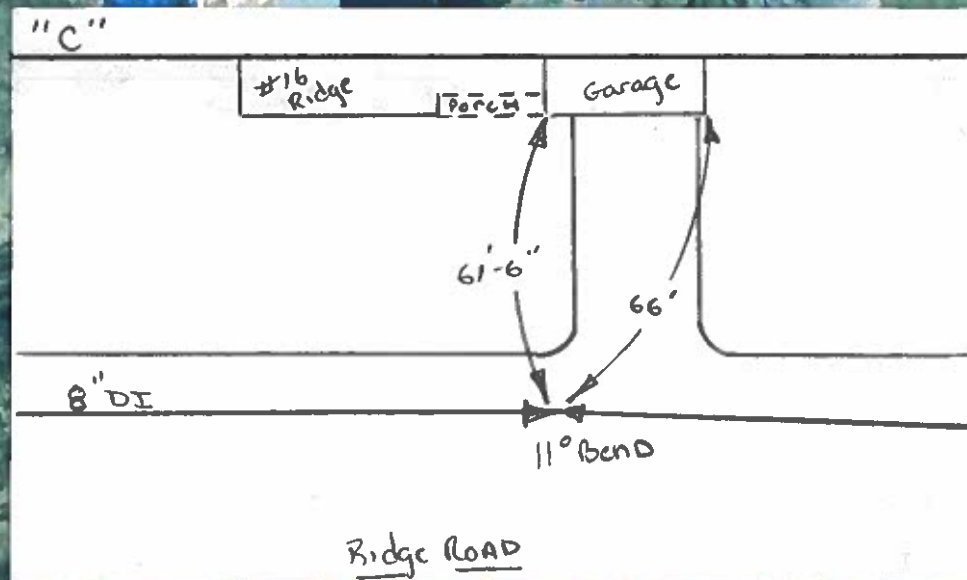
The Town of East Longmeadow and its mapping contractors assume no legal responsibility for the information contained herein.

These data are not suitable for engineering applications or site work nor can the data be used to determine absolute delineation. Instead, the data should be used to portray zones of uncertainty and possible risks.

Map created by East Longmeadow Utilities Application
Orthophotography Copyright Google c/o MassGIS.



1 inch = 47 feet
1/11/2022



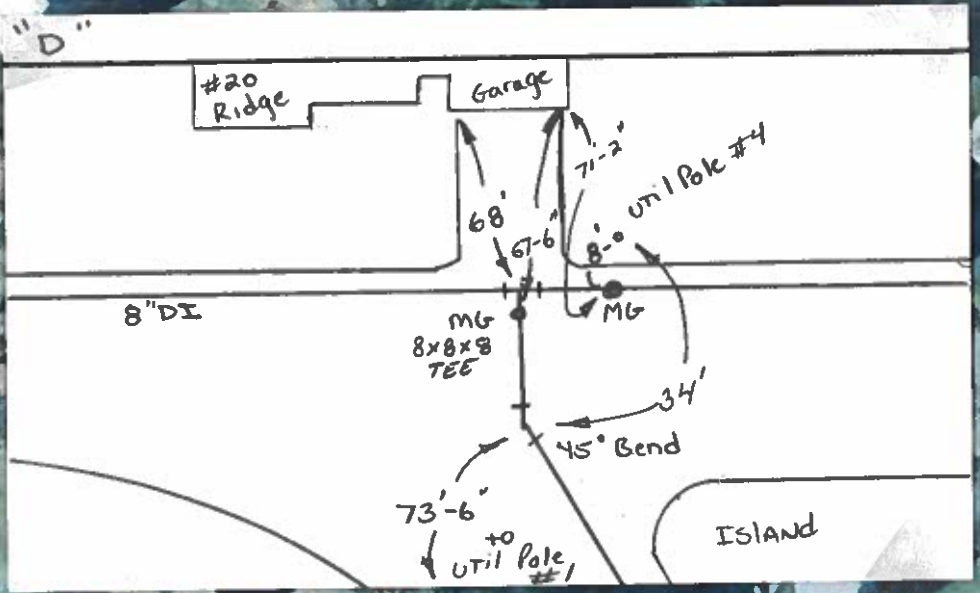
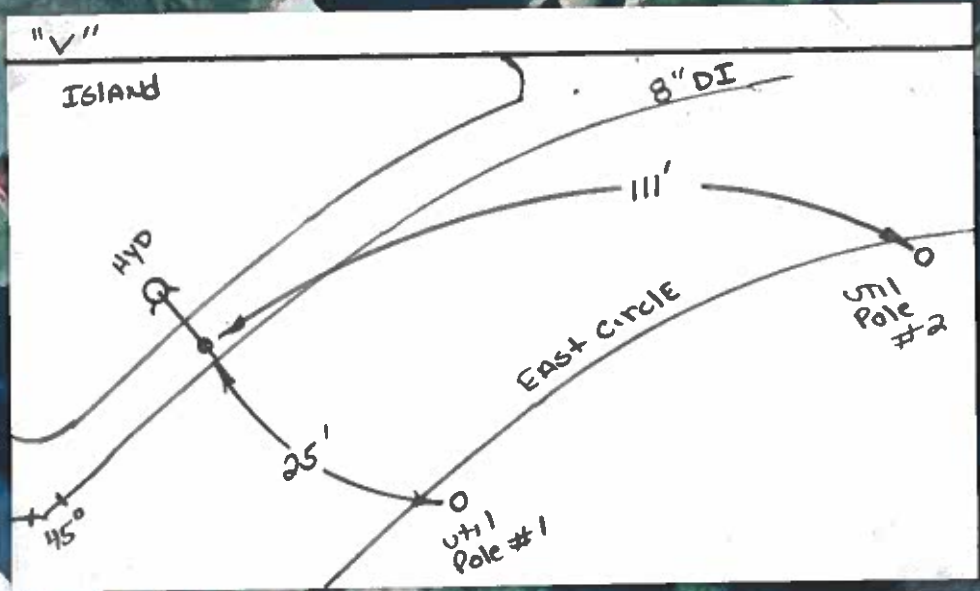
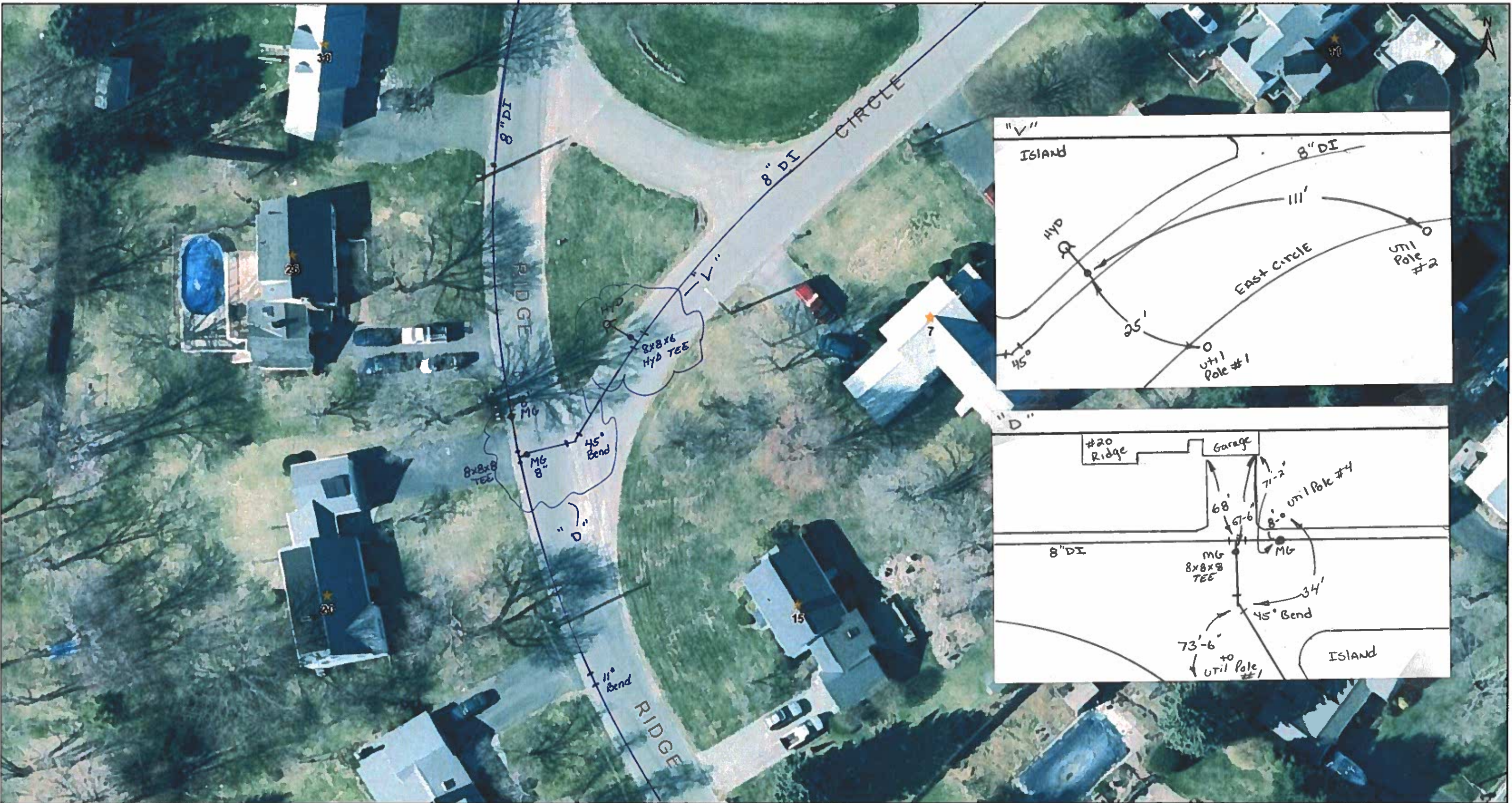
● Active Sewer Manhole	● Bend fitting	— Abandoned Gravity Sewage Main	● Capped End	▭ Detention Basin	✕ Cross Fitting	● Other Service Valve	⚙ Water Meter Pit
● Abandoned Sewer Manhole	— Tee Wye; Tee fitting; Wye fitting	— Abandoned Forced Sewage Main	▲ Flared End Structure	▨ Drain Easement	▢ Plug Fitting	● Gate Valve	⚙ Water Pumping Station
✕ Sewer Connection	○ Cap fitting	— Concrete Encasement	▢ Headwall; Endwall	● Hydrant	◀ Increase; Reducer	● Butterfly Valve	⚙ Fire Pump
▢ Other Features	○ Clean-out fitting	— Steel Sleeve	▢ Rip-rap	● Other Water Fitting	● Tap Fitting	● Blow Off Valve	⚙ Sample Station
▢ Wet Well	▢ Chimney fitting	— DI Sleeve	● Drain Manholes	◡ Bend Fitting	● Tee Fitting	● Other Water Feature	⚙ Water tank
⚙ Pump Station	● Reducer	▢ Catch Basin	● Outfalls	● Coupling	● Other Water Valve	▢ Thrust Protection	⚙ Water Main
● Other Fittings	— Sewer Lateral	▢ Undigitized Catch Basin	— Drain Line	● Gate Valve	● Butterfly Valve	— Abandoned / Inactive Water Main	— Proposed Water Main
	— Gravity Sewage Main	▲ Other Drain Features	— Open Channel	● Blow Off Valve			
	— Forced Sewage Main		— Culvert				

The Town of East Longmeadow and its mapping contractors assume no legal responsibility for the information contained herein.

These data are not suitable for engineering applications or site work nor can the data be used to determine absolute delineation. Instead, the data should be used to portray zones of uncertainty and possible risks.

Map created by East Longmeadow Utilities Application
Orthophotography Copyright Google c/o MassGIS.

1 inch = 47 feet
1/11/2022



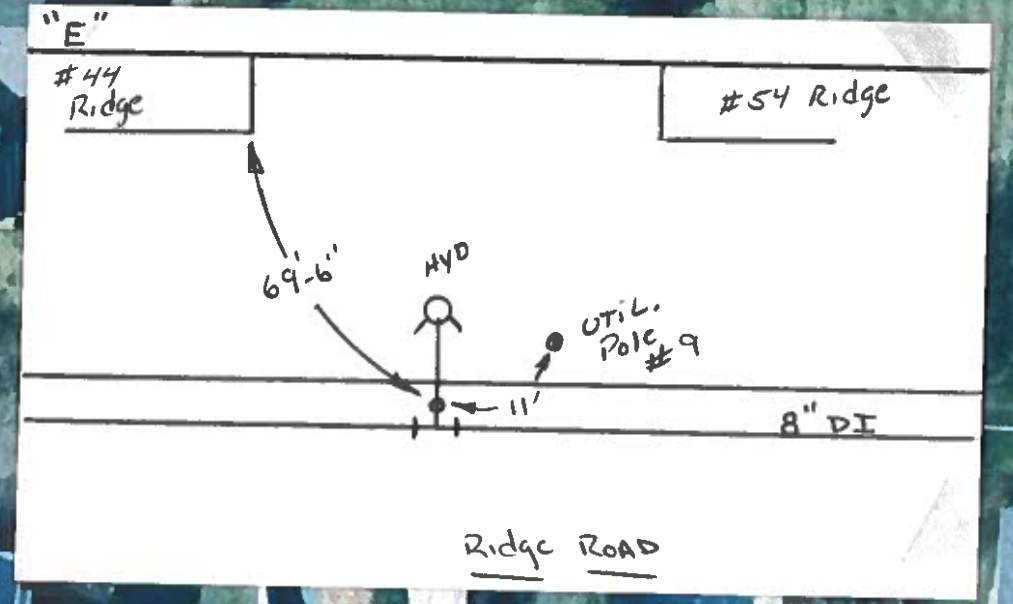
<ul style="list-style-type: none">● Active Sewer Manhole● Abandoned Sewer Manhole➤ Sewer Connection■ Other Features■ Wet Well■ Pump Station▲ Other Fittings	<ul style="list-style-type: none">● Bend fitting~ Tee Wye; Tee fitting; Wye fitting○ Cap fitting○ Clean-out fitting■ Chimney fitting○ Reducer➤ Sewer Lateral➤ Gravity Sewage Main➤ Forced Sewage Main	<ul style="list-style-type: none">➤ Abandoned Gravity Sewage Main➤ Abandoned Forced Sewage Main■ Concrete Encasement■ Steel Sleeve■ DI Sleeve■ Catch Basin■ Undigitized Catch Basin▲ Other Drain Features	<ul style="list-style-type: none">● Capped End▲ Flared End Structure■ Headwall; Endwall■ Rip-rap○ Drain Manholes● Outfalls➤ Drain Line➤ Open Channel➤ Culvert	<ul style="list-style-type: none">■ Detention Basin■ Drain Easement● Hydrant■ Other Water Fitting○ Bend Fitting● Cap Fitting	<ul style="list-style-type: none">■ Cross Fitting■ Plug Fitting➤ In increaser; Reducer■ Tap Fitting○ Tee Fitting● Coupling● Other Water Valve● Gate Valve● Butterfly Valve● Blow Off Valve	<ul style="list-style-type: none">● Other Service Valve● Gate Valve● Butterfly Valve● Blow Off Valve● Other Water Feature■ Thrust Protection	<ul style="list-style-type: none">■ Water Meter Pit■ Water Pumping Station■ Fire Pump■ Sample Station■ Water tank■ Water Main■ Abandoned / Inactive Water Main■ Proposed Water Main	<ul style="list-style-type: none">■ Abandoned Water Lateral■ Proposed Water Lateral■ Water Lateral■ Water Easement■ Easement Boundaries■ Break Out Tanks● LNG's■ Pipelines
---	---	--	---	---	---	---	--	---

The Town of East Longmeadow and its mapping contractors assume no legal responsibility for the information contained herein.

These data are not suitable for engineering applications or site work nor can the data be used to determine absolute delineation. Instead, the data should be used to portray zones of uncertainty and possible risks.

Map created by East Longmeadow Utilities Application
Orthophotography Copyright Google c/o MassGIS.

1 inch = 47 feet
1/11/2022



8" DI
RIDGE ROAD

8x8x6
HYD T&S

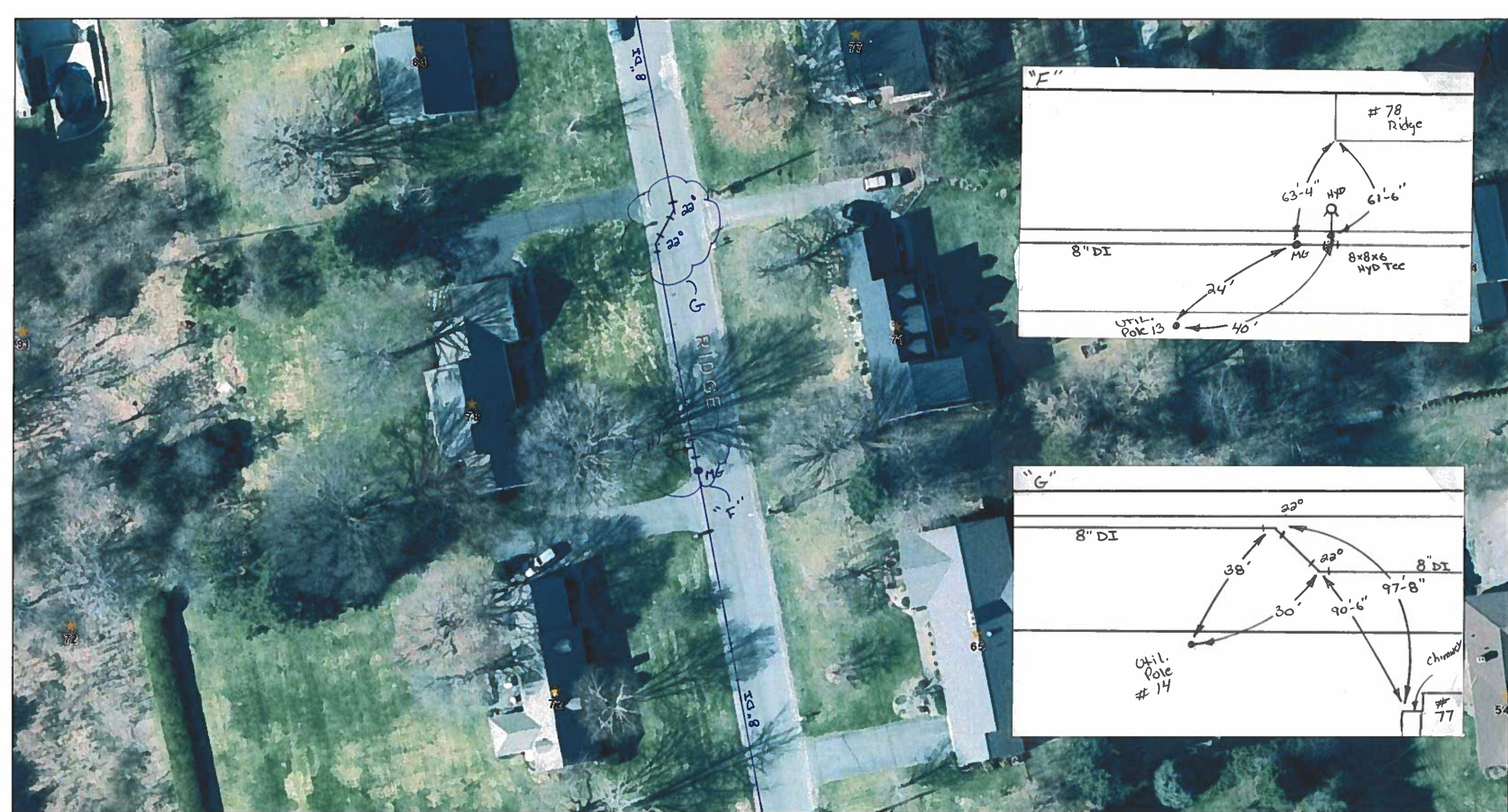
● Active Sewer Manhole	● Bend fitting	→ Abandoned Gravity Sewage Main	● Capped End	▭ Detention Basin	⊕ Cross Fitting	● Other Service Valve	⊕ Water Meter Pit	— Abandoned Water Lateral
● Abandoned Sewer Manhole	~ Tee Wye; Tee fitting; Wye fitting	→ Abandoned Forced Sewage Main	▲ Flared End Structure	▨ Drain Easement	⌋ Plug Fitting	● Gate Valve	⊕ Water Pumping Station	— Proposed Water Lateral
➤ Sewer Connection	○ Cap fitting	— Concrete Encasement	⊕ Headwall; Endwell	● Hydrant	⌋ Increase; Reducer	● Butterfly Valve	⊕ Fire Pump	— Water Lateral
■ Other Features	⊕ Clean-out fitting	— Steel Sleeve	■ Rip-rap	■ Other Water Fitting	⌋ Tee Fitting	● Blow Off Valve	⊕ Sample Station	▨ Water Easement
■ Wet Well	⊕ Chimney fitting	— DI Sleeve	⊕ Drain Manholes	⌋ Bend Fitting	● Coupling	● Other Water Feature	⊕ Water tank	▨ Easement Boundaries
⊕ Pump Station	⌋ Reducer	⊕ Catch Basin	● Outfalls	● Cap Fitting	● Other Water Valve	■ Thrust Protection	⊕ Abandoned / Inactive Water Main	● Break Out Tanks
▲ Other Fittings	→ Sewer Lateral	⊕ Undigitized Catch Basin	→ Drain Line	→ Open Channel	● Gate Valve	⊕ Proposed Water Main	● LNG's	● Pipelines
	→ Gravity Sewage Main	▲ Other Drain Features	→ Culvert		● Butterfly Valve			
	→ Forced Sewage Main				● Blow Off Valve			

The Town of East Longmeadow and its mapping contractors assume no legal responsibility for the information contained herein.

These data are not suitable for engineering applications or site work nor can the data be used to determine absolute delineation. Instead, the data should be used to portray zones of uncertainty and possible risks.

Map created by East Longmeadow Utilities Application
Orthophotography Copyright Google c/o MassGIS.

1 inch = 47 feet
1/11/2022



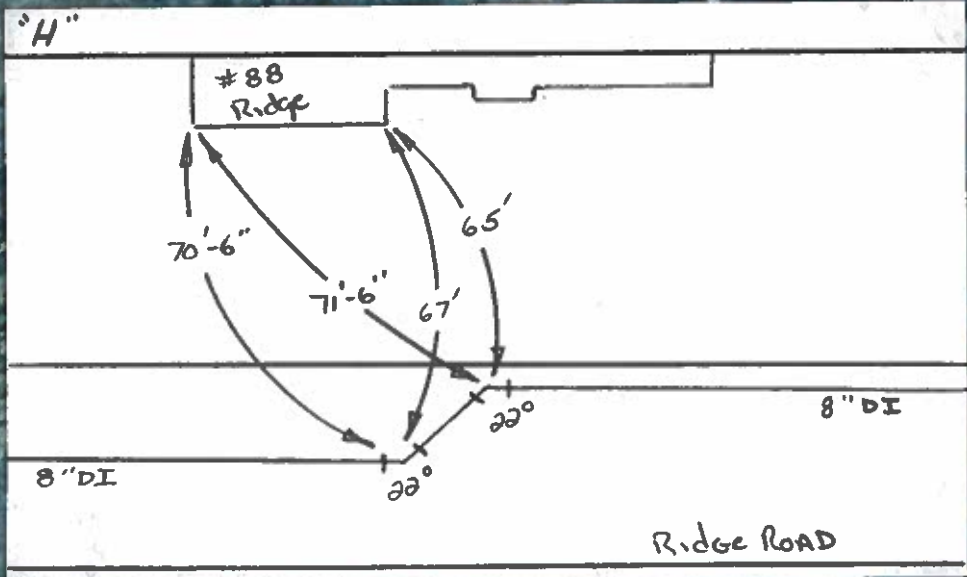
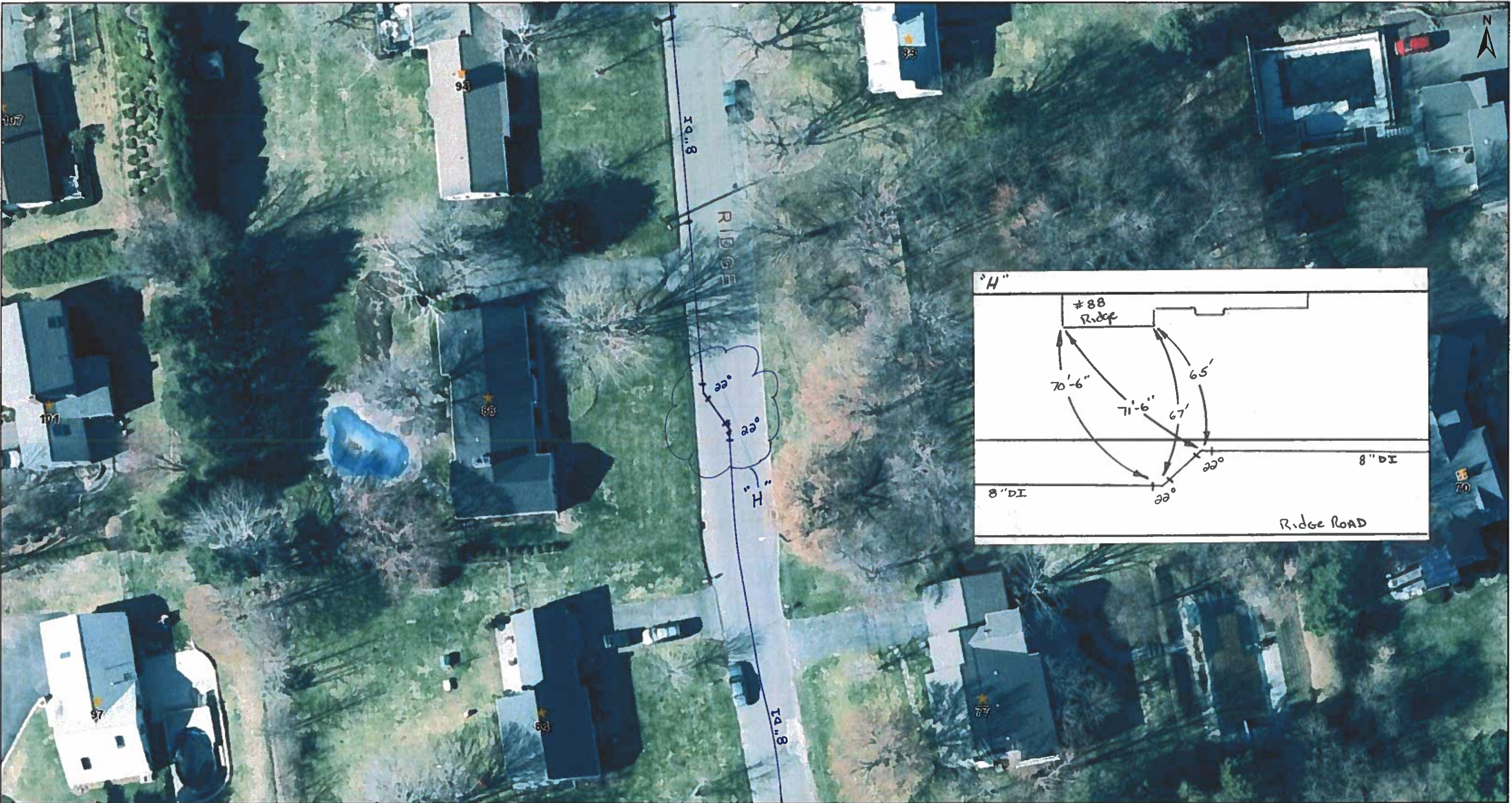
● Active Sewer Manhole	● Bend fitting	— Abandoned Gravity Sewage Main	● Capped End	□ Detention Basin	● Cross Fitting	● Other Service Valve	⊞ Water Meter Pit
● Abandoned Sewer Manhole	— Tee Wye; Tee fitting; Wye fitting	— Abandoned Forced Sewage Main	▲ Flared End Structure	▨ Drain Easement	⌋ Plug Fitting	● Gate Valve	⊞ Water Pumping Station
— Sewer Connection	● Cap fitting	— Concrete Encasement	⌋ Headwall; Endwall	● Hydrant	◀ Increaser; Reducer	● Butterfly Valve	⊞ Fire Pump
■ Other Features	● Clean-out fitting	— Steel Sleeve	■ Rip-rap	■ Other Water Fitting	■ Tap Fitting	● Blow Off Valve	⊞ Sample Station
■ Wet Well	■ Chimney fitting	— DI Sleeve	● Drain Manholes	● Bend Fitting	● Tee Fitting	● Other Water Feature	⊞ Water tank
■ Pump Station	● Reducer	■ Catch Basin	● Outfalls	● Coupling	● Other Water Valve	■ Thrust Protection	— Water Main
▲ Other Fittings	— Sewer Lateral	■ Undigitized Catch Basin	— Drain Line	● Gate Valve	● Butterfly Valve	— Abandoned / Inactive Water Main	— Proposed Water Main
	— Gravity Sewage Main	▲ Other Drain Features	— Open Channel	● Blow Off Valve			
	— Forced Sewage Main		— Culvert				

The Town of East Longmeadow and its mapping contractors assume no legal responsibility for the information contained herein.

These data are not suitable for engineering applications or site work nor can the data be used to determine absolute delineation. Instead, the data should be used to portray zones of uncertainty and possible risks.

Map created by East Longmeadow Utilities Application
Orthophotography Copyright Google c/o MassGIS.

1 inch = 47 feet
1/11/2022



● Active Sewer Manhole	● Bend fitting	— Abandoned Gravity Sewage Main	● Capped End	▭ Detention Basin	● Cross Fitting	● Other Service Valve	⊞ Water Meter Pit
● Abandoned Sewer Manhole	~ Tee Wye; Tee fitting; Wye fitting	— Abandoned Forced Sewage Main	▲ Flared End Structure	▨ Drain Easement	● Plug Fitting	● Gate Valve	⊞ Water Pumping Station
➤ Sewer Connection	● Cap fitting	— Concrete Encasement	⊞ Headwall; Endwall	● Hydrant	◀ Increaser; Reducer	● Butterfly Valve	⊞ Fire Pump
■ Other Features	● Clean-out fitting	— Steel Sleeve	■ Rip-rap	■ Other Water Fitting	■ Tap Fitting	● Blow Off Valve	⊞ Sample Station
■ Wet Well	■ Chimney fitting	— DI Sleeves	● Drain Manholes	● Bend Fitting	● Tee Fitting	● Other Water Feature	⊞ Water tank
⊞ Pump Station	● Reducer	⊞ Catch Basin	● Outfalls	● Coupling	● Other Water Valve	■ Thrust Protection	⊞ Water Main
● Other Fittings	— Sewer Lateral	⊞ Undigitized Catch Basin	— Drain Line	● Gate Valve	● Butterfly Valve	— Abandoned / Inactive Water Main	— Proposed Water Main
	— Gravity Sewage Main	▲ Other Drain Features	— Open Channel	● Blow Off Valve			
	— Forced Sewage Main		— Culvert				

The Town of East Longmeadow and its mapping contractors assume no legal responsibility for the information contained herein.

These data are not suitable for engineering applications or site work nor can the data be used to determine absolute delineation. Instead, the data should be used to portray zones of uncertainty and possible risks.

Map created by East Longmeadow Utilities Application
Orthophotography Copyright Google c/o MassGIS.

1 inch = 47 feet
1/11/2022



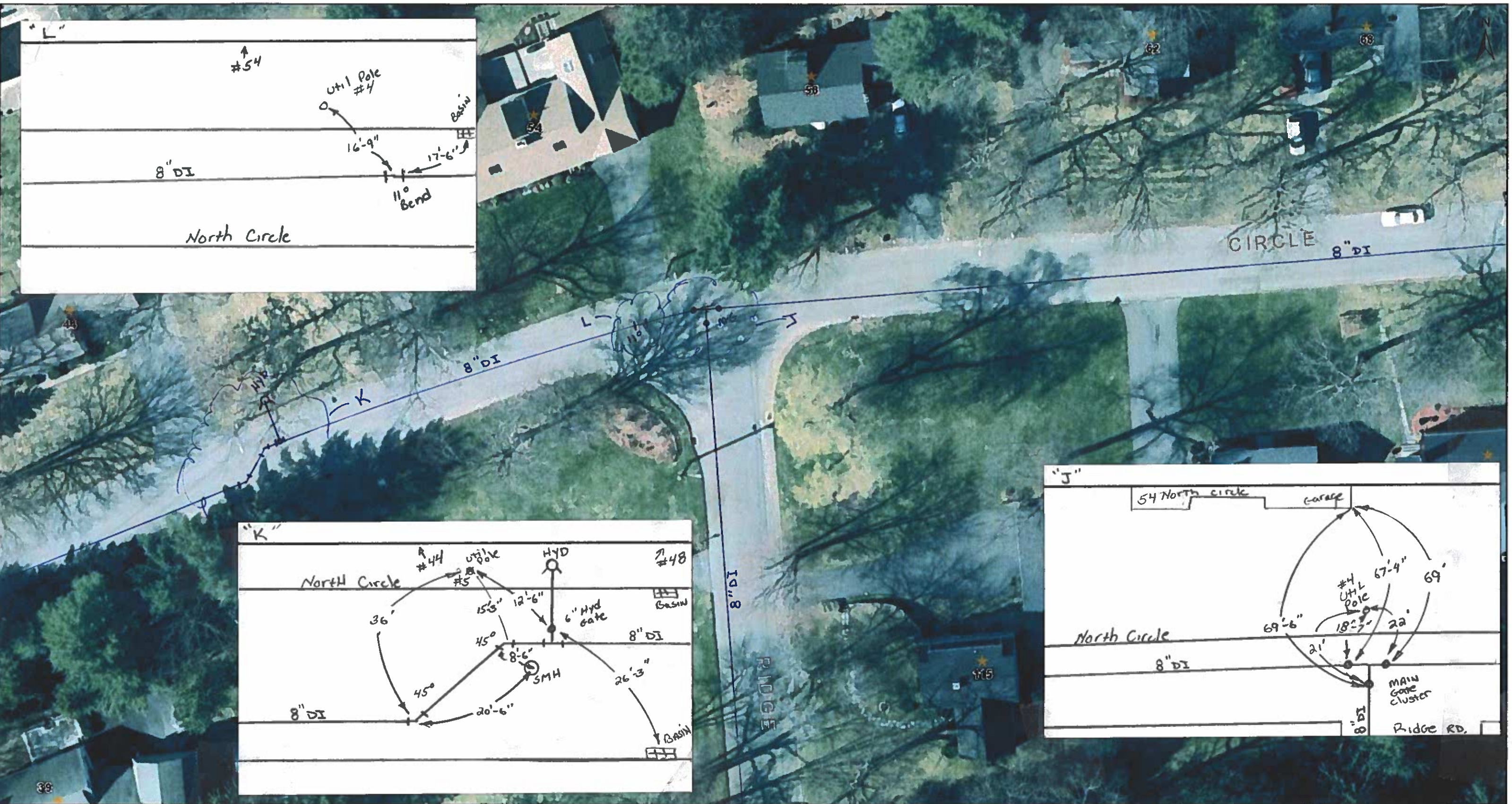
● Active Sewer Manhole	● Bend fitting	— Abandoned Gravity Sewage Main	● Capped End	■ Detention Basin	● Cross Fitting	● Other Service Valve	■ Water Meter Pit
● Abandoned Sewer Manhole	~ Tee Wye; Tee fitting; Wye fitting	— Abandoned Forced Sewage Main	▲ Flared End Structure	▨ Drain Easement	▢ Plug Fitting	● Gate Valve	■ Water Pumping Station
✕ Sewer Connection	○ Cap fitting	— Concrete Encasement	■ Headwall; Endwall	● Hydrant	◀ Increase; Reducer	● Butterfly Valve	■ Fire Pump
■ Other Features	⊙ Clean-out fitting	— Steel Sleeve	■ Rip-rap	■ Other Water Fitting	▢ Tap Fitting	● Blow Off Valve	■ Sample Station
■ Wet Well	⊙ Chimney fitting	— DI Sleeve	● Drain Manholes	◡ Bend Fitting	● Tee Fitting	● Other Water Feature	■ Water tank
■ Pump Station	○ Reducer	■ Catch Basin	● Outfalls	● Cap Fitting	● Coupling	■ Thrust Protection	■ Water Main
● Other Fittings	— Sewer Lateral	■ Undigitized Catch Basin	— Drain Line		● Other Water Valve		— Abandoned / Inactive Water Main
	— Gravity Sewage Main	▲ Other Drain Features	— Open Channel		● Gate Valve		— Proposed Water Main
	— Forced Sewage Main		● Culvert		● Butterfly Valve		
					● Blow Off Valve		

The Town of East Longmeadow and its mapping contractors assume no legal responsibility for the information contained herein.

These data are not suitable for engineering applications or site work nor can the data be used to determine absolute delineation. Instead, the data should be used to portray zones of uncertainty and possible risks.

Map created by East Longmeadow Utilities Application
Orthophotography Copyright Google c/o MassGIS.

1 inch = 47 feet
1/11/2022




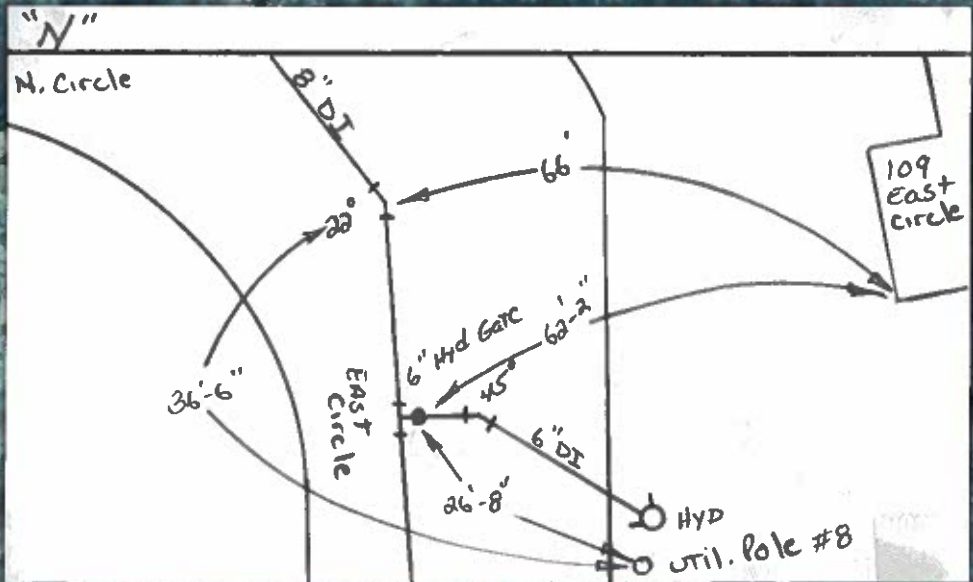
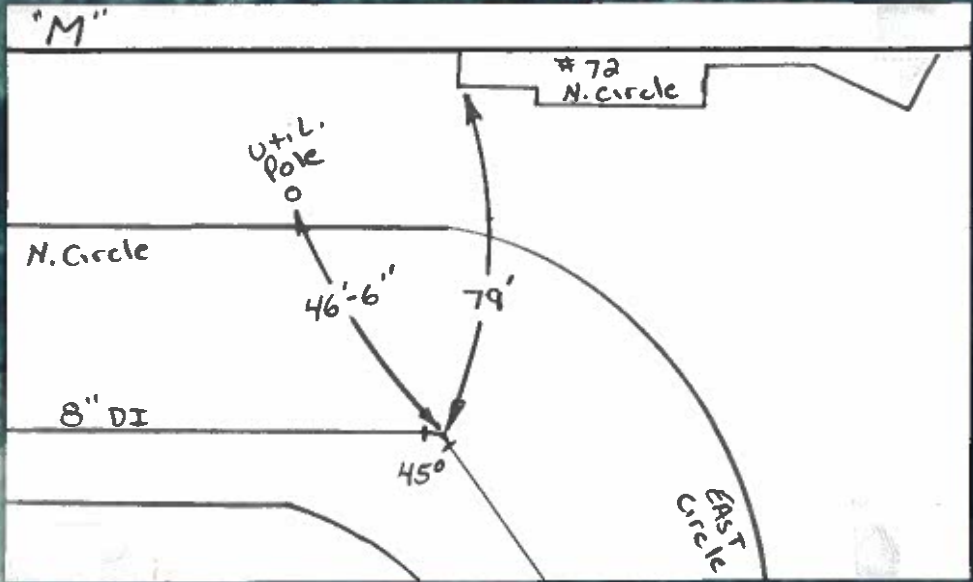
● Active Sewer Manhole	● Bend fitting	→ Abandoned Gravity Sewage Main	● Capped End	□ Detention Basin	● Cross Fitting	● Other Service Valve	⊞ Water Meter Pit
● Abandoned Sewer Manhole	— Tee Wye; Tee fitting; Wye fitting	→ Abandoned Forced Sewage Main	▲ Flared End Structure	▨ Drain Easement	● Plug Fitting	● Gate Valve	⊞ Water Pumping Station
→ Sewer Connection	○ Cap fitting	→ Concrete Encasement	→ Headwall; Endwall	● Hydrant	● Increase; Reducer	● Butterfly Valve	⊞ Fire Pump
● Other Features	○ Clean-out fitting	→ Steel Sleeve	→ Rip-rap	● Other Water Fitting	● Tap Fitting	● Blow Off Valve	⊞ Sample Station
● Wet Well	○ Chimney fitting	→ DI Sleeve	○ Drain Manholes	● Bend Fitting	● Tee Fitting	● Other Water Feature	⊞ Water tank
● Pump Station	○ Reducer	→ Catch Basin	● Outfalls	● Coupling	● Other Water Valve	● Thrust Protection	⊞ Water Main
○ Other Fittings	→ Sewer Lateral	→ Undigitized Catch Basin	→ Drain Line	● Gate Valve	● Butterfly Valve	→ Abandoned / Inactive Water Main	→ Proposed Water Main
	→ Gravity Sewage Main	→ Other Drain Features	→ Open Channel	● Blow Off Valve			
	→ Forced Sewage Main		→ Culvert				

The Town of East Longmeadow and its mapping contractors assume no legal responsibility for the information contained herein.

These data are not suitable for engineering applications or site work nor can the data be used to determine absolute delineation. Instead, the data should be used to portray zones of uncertainty and possible risks.

Map created by East Longmeadow Utilities Application
Orthophotography Copyright Google clo MassGIS.


1 inch = 47 feet
1/11/2022



<ul style="list-style-type: none">● Active Sewer Manhole● Abandoned Sewer Manhole▶ Sewer Connection■ Other Features■ Wet Well■ Pump Station● Other Fittings	<ul style="list-style-type: none">● Bend fitting● Tee Wye; Tee fitting; Wye fitting● Cap fitting● Clean-out fitting● Chimney fitting● Reducer— Sewer Lateral— Gravity Sewage Main— Forced Sewage Main	<ul style="list-style-type: none">— Abandoned Gravity Sewage Main— Abandoned Forced Sewage Main— Concrete Encasement— Steel Sleeve— DI Sleeve■ Catch Basin■ Undigitized Catch Basin▲ Other Drain Features	<ul style="list-style-type: none">● Capped End▲ Flared End Structure■ Headwall; Endwall■ Rip-rap● Drain Manholes● Outfalls— Drain Line— Open Channel— Culvert	<ul style="list-style-type: none">■ Detention Basin■ Drain Easement● Hydrant■ Other Water Fitting— Bend Fitting● Cap Fitting	<ul style="list-style-type: none">● Cross Fitting● Plug Fitting● In increaser; Reducer● Tap Fitting● Tee Fitting● Coupling● Other Water Valve● Gate Valve● Butterfly Valve● Blow Off Valve	<ul style="list-style-type: none">● Other Service Valve● Gate Valve● Butterfly Valve● Blow Off Valve● Other Water Feature■ Thrust Protection	<ul style="list-style-type: none">■ Water Meter Pit■ Water Pumping Station■ Fire Pump■ Sample Station● Water tank— Water Main— Abandoned / Inactive Water Main— Proposed Water Main	<ul style="list-style-type: none">— Abandoned Water Lateral— Proposed Water Lateral— Water Lateral■ Water Easement— Easement Boundaries● Break Out Tanks● LNG's— Pipelines
---	---	--	---	---	---	---	--	---

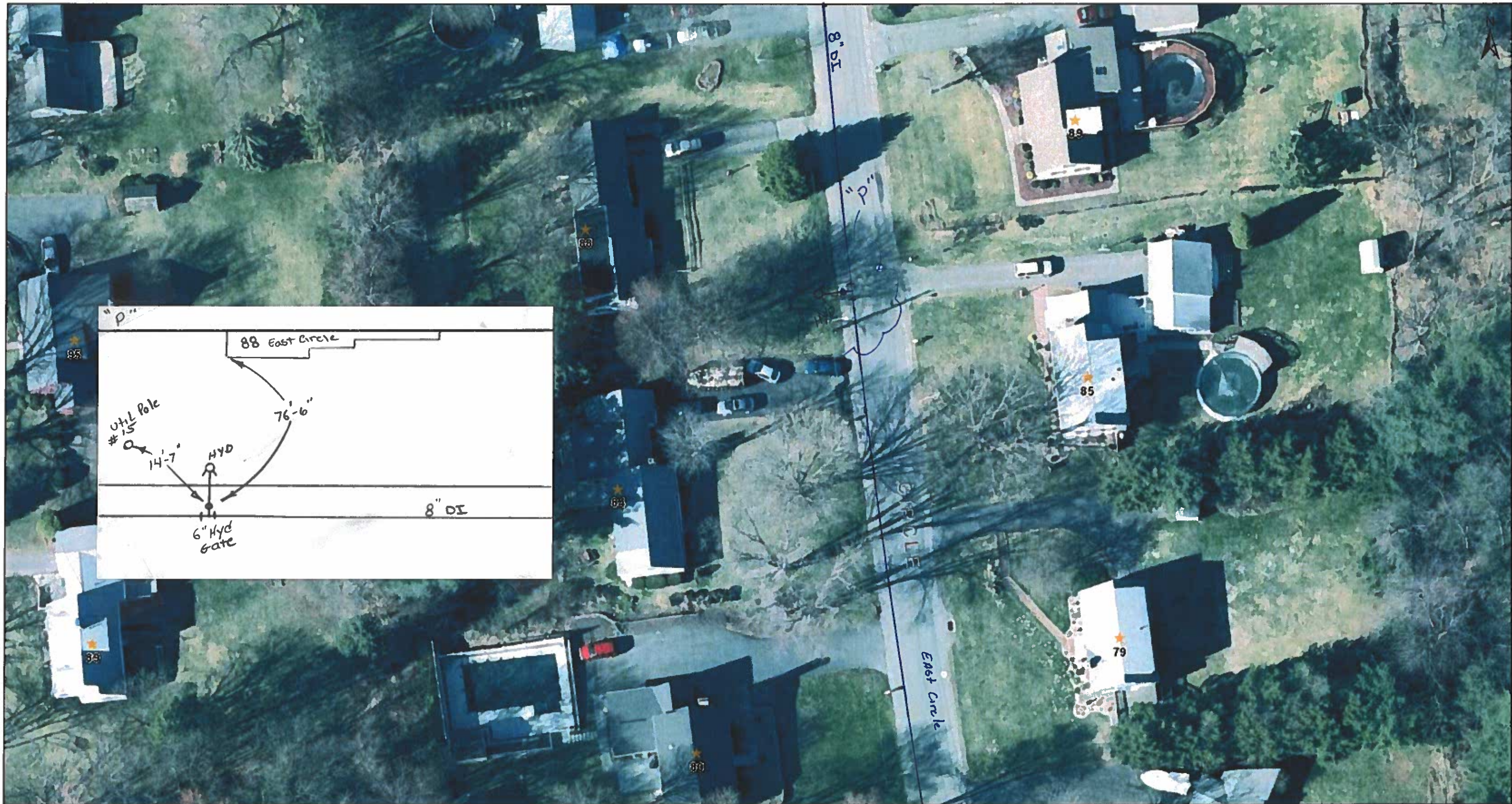
The Town of East Longmeadow and its mapping contractors assume no legal responsibility for the information contained herein.

These data are not suitable for engineering applications or site work nor can the data be used to determine absolute delineation. Instead, the data should be used to portray zones of uncertainty and possible risks.

Map created by East Longmeadow Utilities Application
Orthophotography Copyright Google c/o MassGIS.



1 inch = 47 feet
1/11/2022



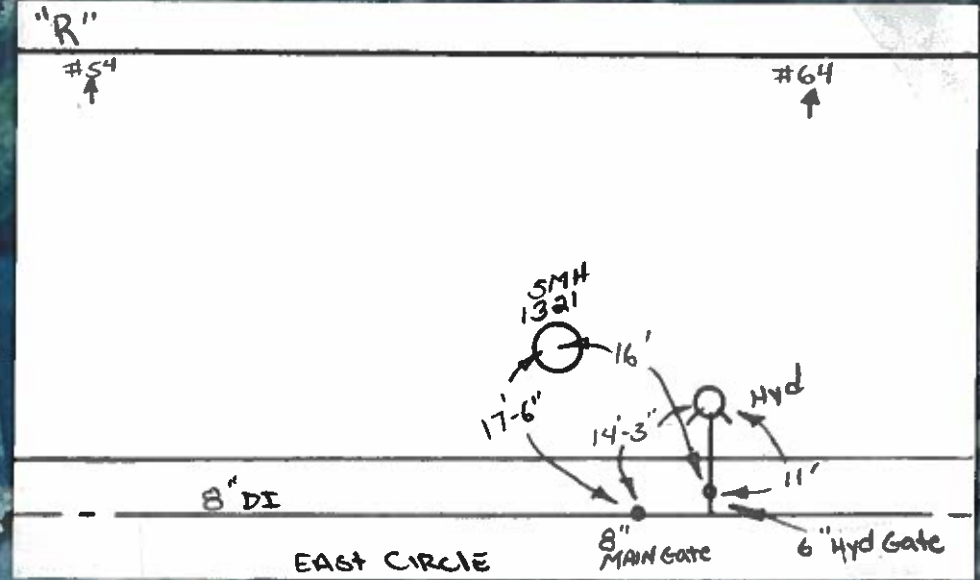
<ul style="list-style-type: none">● Active Sewer Manhole● Abandoned Sewer Manhole➤ Sewer Connection■ Other Features■ Wet Well■ Pump Station● Other Fittings	<ul style="list-style-type: none">● Bend fitting— Tee Wye; Tee fitting; Wye fitting● Cap fitting● Clean-out fitting■ Chimney fitting● Reducer— Sewer Lateral— Gravity Sewage Main— Forced Sewage Main	<ul style="list-style-type: none">— Abandoned Gravity Sewage Main— Abandoned Forced Sewage Main— Concrete Encasement— Steel Sleeve— DI Sleeve■ Catch Basin■ Undigitized Catch Basin▲ Other Drain Features	<ul style="list-style-type: none">● Capped End▲ Flared End Structure■ Headwall; Endwall■ Rip-rap● Drain Manholes● Outfalls— Drain Line— Open Channel— Culvert	<ul style="list-style-type: none">■ Detention Basin■ Drain Easement● Hydrant■ Other Water Fitting— Bend Fitting● Cap Fitting	<ul style="list-style-type: none">■ Cross Fitting□ Plug Fitting◁ Increase; Reducer■ Tap Fitting● Tee Fitting● Coupling● Other Water Valve● Gate Valve● Butterfly Valve● Blow Off Valve	<ul style="list-style-type: none">● Other Service Valve● Gate Valve● Butterfly Valve● Blow Off Valve● Other Water Feature■ Thrust Protection	<ul style="list-style-type: none">■ Water Meter Pit■ Water Pumping Station■ Fire Pump■ Sample Station■ Water tank— Water Main— Abandoned / Inactive Water Main— Proposed Water Main	<ul style="list-style-type: none">— Abandoned Water Lateral— Proposed Water Lateral— Water Lateral■ Water Easement— Easement Boundaries■ Break Out Tanks● LNG's— Pipelines
---	---	--	---	---	---	---	--	---

The Town of East Longmeadow and its mapping contractors assume no legal responsibility for the information contained herein.

These data are not suitable for engineering applications or site work nor can the data be used to determine absolute delineation. Instead, the data should be used to portray zones of uncertainty and possible risks.

Map created by East Longmeadow Utilities Application
Orthophotography Copyright Google c/o MassGIS.


1 inch = 47 feet
1/11/2022



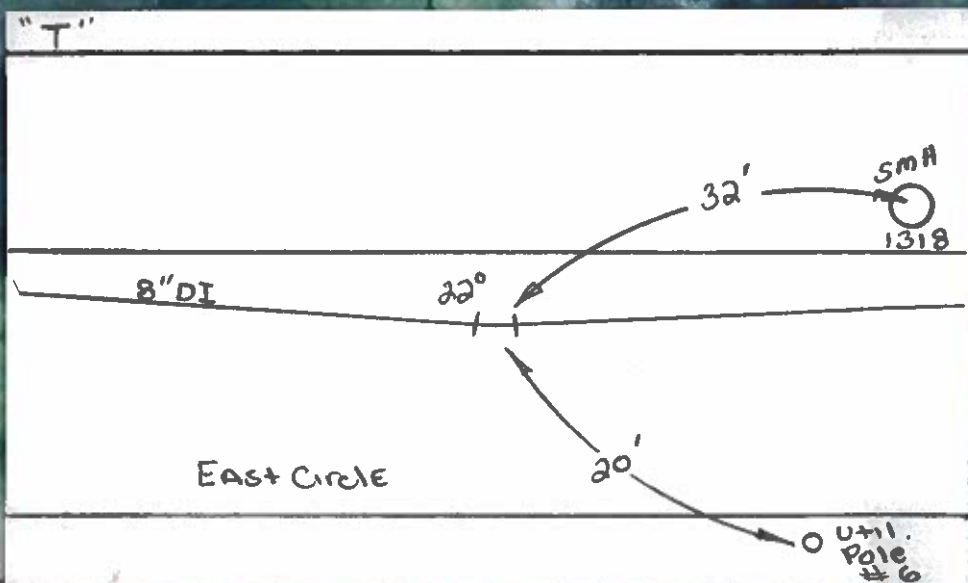
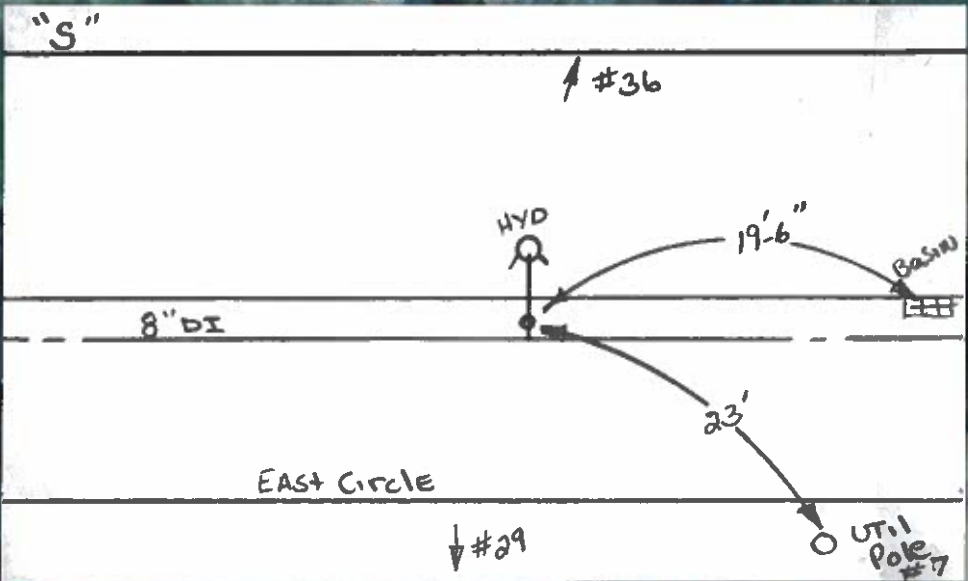
The Town of East Longmeadow and its mapping contractors assume no legal responsibility for the information contained herein.

These data are not suitable for engineering applications or site work nor can the data be used to determine absolute delineation. Instead, the data should be used to portray zones of uncertainty and possible risks.

Map created by East Longmeadow Utilities Application
Orthophotography Copyright Google c/o MassGIS.



1 inch = 47 feet
1/11/2022



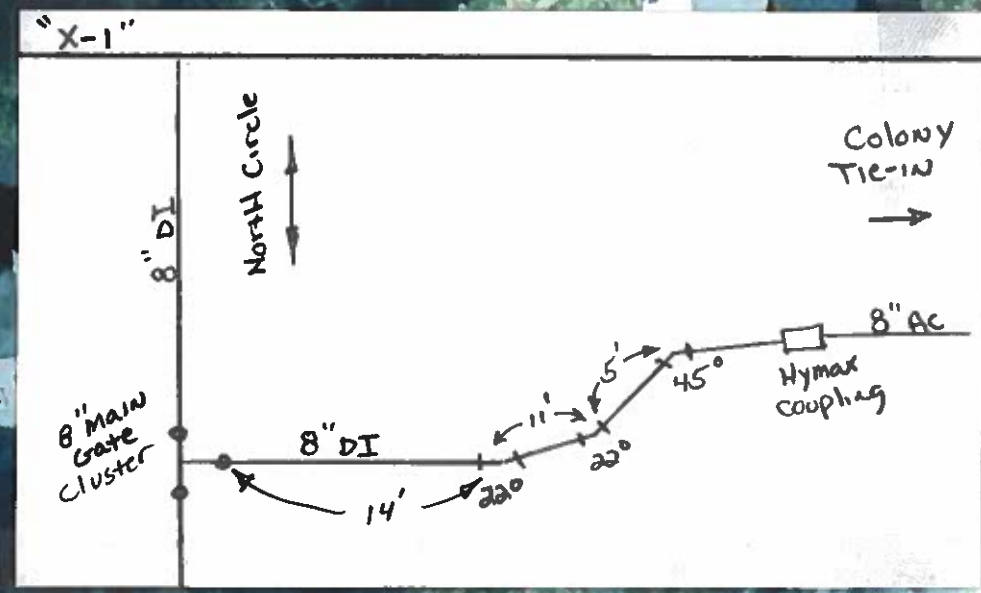
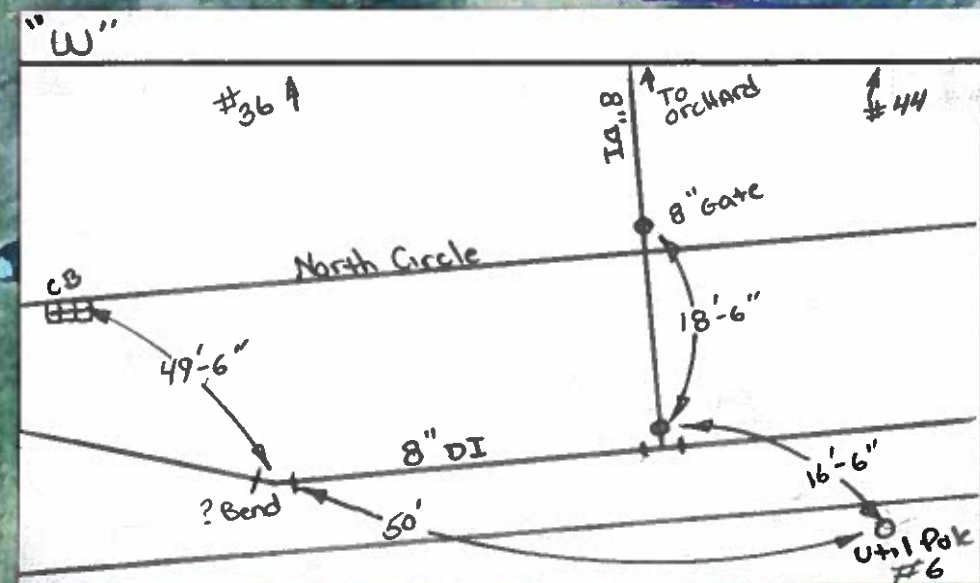
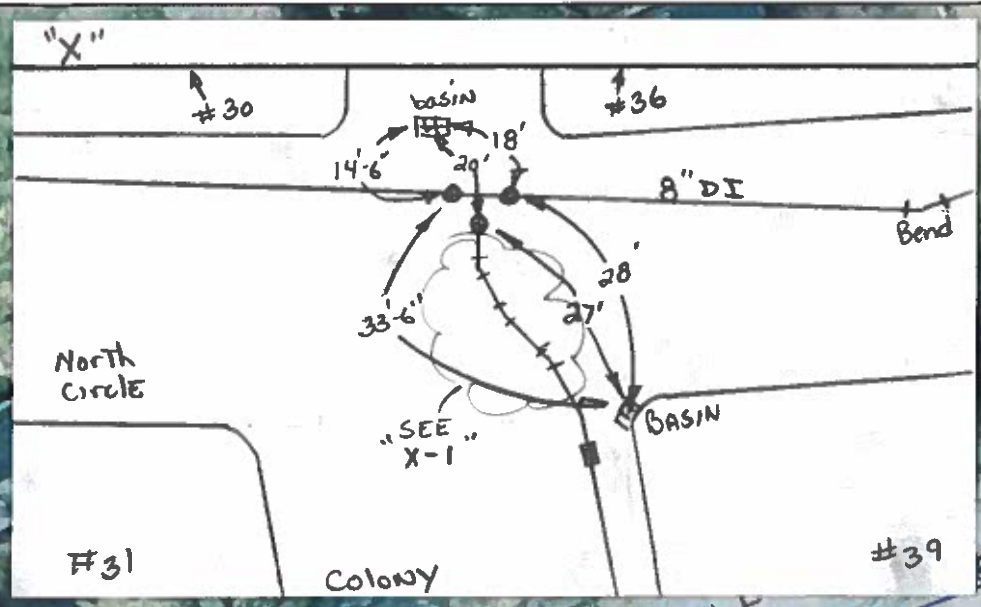
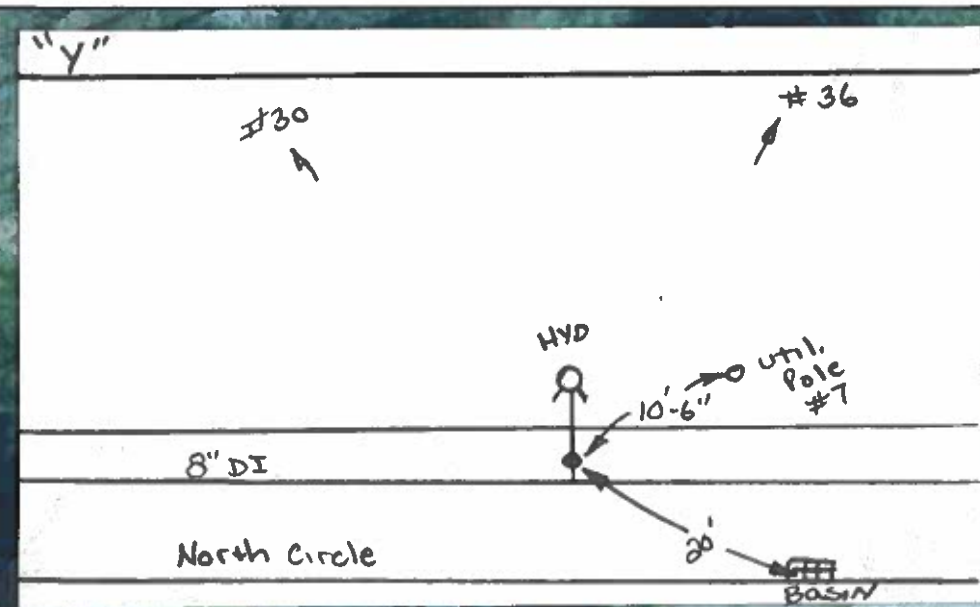
● Active Sewer Manhole	● Bend fitting	→ Abandoned Gravity Sewage Main	● Capped End	□ Detention Basin	● Cross Fitting	● Other Service Valve	W Water Meter Pit
● Abandoned Sewer Manhole	→ Tee Wye; Tee fitting; Wye fitting	→ Abandoned Forced Sewage Main	▲ Flared End Structure	▨ Drain Easement	● Plug Fitting	● Gate Valve	PS Water Pumping Station
→ Sewer Connection	● Cap fitting	→ Concrete Encasement	● Headwall; Endwall	● Hydrant	→ Insealer; Reducer	● Butterfly Valve	● Fire Pump
● Other Features	● Clean-out fitting	→ Steel Sleeve	● Rip-rap	● Other Water Fitting	● Tap Fitting	● Blow Off Valve	● Sample Station
● Wet Well	● Chimney fitting	→ DI Sleeve	● Drain Manholes	● Bend Fitting	● Tee Fitting	● Other Water Feature	● Water tank
● Pump Station	● Reducer	→ Catch Basin	● Outfalls	● Cap Fitting	● Coupling	● Thrust Protection	● Water Main
● Other Fittings	→ Sewer Lateral	→ Undigitized Catch Basin	→ Drain Line		● Other Water Valve		→ Abandoned / Inactive Water Main
	→ Gravity Sewage Main	→ Other Drain Features	→ Open Channel		● Gate Valve		→ Proposed Water Main
	→ Forced Sewage Main		→ Culvert		● Butterfly Valve		
					● Blow Off Valve		

The Town of East Longmeadow and its mapping contractors assume no legal responsibility for the information contained herein.

These data are not suitable for engineering applications or site work nor can the data be used to determine absolute delineation. Instead, the data should be used to portray zones of uncertainty and possible risks.

Map created by East Longmeadow Utilities Application
Orthophotography Copyright Google c/o MassGIS.

1 inch = 47 feet
1/11/2022



<ul style="list-style-type: none"> ● Active Sewer Manhole ● Abandoned Sewer Manhole ➤ Sewer Connection ■ Other Features ■ Wet Well ■ Pump Station ● Other Fittings 	<ul style="list-style-type: none"> ● Bend fitting ~ Tee Wye; Tee fitting; Wye fitting ● Cap fitting ● Clean-out fitting ■ Chimney fitting ● Reducer — Sewer Lateral ➤ Gravity Sewage Main ➤ Forced Sewage Main 	<ul style="list-style-type: none"> ➤ Abandoned Gravity Sewage Main ➤ Abandoned Forced Sewage Main — Concrete Encasement — Steel Sleeve — DI Sleeve ■ Catch Basin ■ Undigitized Catch Basin ▲ Other Drain Features 	<ul style="list-style-type: none"> ● Capped End ▲ Flared End Structure ■ Headwall; Endwall ■ Rip-rap ● Drain Manholes ● Outfalls ➤ Drain Line ➤ Open Channel ➤ Culvert 	<ul style="list-style-type: none"> ■ Detention Basin ■ Drain Easement ● Hydrant ■ Other Water Fitting ● Bend Fitting ● Cap Fitting ■ Cross Fitting ➤ Plug Fitting ➤ Insealer; Reducer ■ Tap Fitting ● Tee Fitting ● Coupling ● Other Water Valve ● Gate Valve ● Butterfly Valve ● Blow Off Valve 	<ul style="list-style-type: none"> ● Other Service Valve ● Gate Valve ● Butterfly Valve ● Blow Off Valve ● Other Water Feature ■ Thrust Protection ■ Water Meter Pit ■ Water Pumping Station ■ Fire Pump ■ Sample Station ■ Water tank — Water Main — Abandoned / Inactive Water Main — Proposed Water Main 	<ul style="list-style-type: none"> — Abandoned Water Lateral — Proposed Water Lateral — Water Lateral ■ Water Easement — Easement Boundaries ■ Break Out Tanks ● LNG's — Pipelines 	<p>The Town of East Longmeadow and its mapping contractors assume no legal responsibility for the information contained herein.</p> <p>These data are not suitable for engineering applications or site work nor can the data be used to determine absolute delineation. Instead, the data should be used to portray zones of uncertainty and possible risks.</p> <p>Map created by East Longmeadow Utilities Application Orthophotography Copyright Google clo MassGIS.</p>	<p>1 inch = 47 feet 1/11/2022</p>
---	---	---	---	--	---	--	--	---------------------------------------



● Active Sewer Manhole	● Bend fitting	→ Abandoned Gravity Sewage Main	● Capped End	■ Detention Basin	● Cross Fitting	● Other Service Valve	W Water Meter Pit
● Abandoned Sewer Manhole	● Tee Wye; Tee fitting; Wye fitting	→ Abandoned Forced Sewage Main	▲ Flared End Structure	▨ Drain Easement	● Plug Fitting	● Gate Valve	PS Water Pumping Station
→ Sewer Connection	● Cap fitting	→ Concrete Encasement	■ Headwall; Endwall	● Hydrant	● In increaser; Reducer	● Butterfly Valve	● Fire Pump
■ Other Features	● Clean-out fitting	→ Steel Sleeves	■ Rip-rap	● Other Water Fitting	● Tap Fitting	● Blow Off Valve	● Sample Station
■ Wet Well	● Chimney fitting	→ DI Sleeve	● Drain Manholes	● Bend Fitting	● Tee Fitting	● Other Water Feature	● Water tank
■ Pump Station	● Reducer	■ Catch Basin	● Outfalls	● Cap Fitting	● Coupling	■ Thrust Protection	● Water Main
● Other Fittings	→ Sewer Lateral	■ Undigitized Catch Basin	→ Drain Line		● Other Water Valve		→ Abandoned / Inactive Water Main
	→ Gravity Sewage Main	▲ Other Drain Features	→ Open Channel		● Gate Valve		→ Proposed Water Main
	→ Forced Sewage Main		→ Culvert		● Butterfly Valve		
					● Blow Off Valve		

The Town of East Longmeadow and its mapping contractors assume no legal responsibility for the information contained herein.

These data are not suitable for engineering applications or site work nor can the data be used to determine absolute delineation. Instead, the data should be used to portray zones of uncertainty and possible risks.

Map created by East Longmeadow Utilities Application
Orthophotography Copyright Google c/o MassGIS.

1 inch = 24 feet
1/19/2022