

VERANDA AVENUE
CONSTRUCTION NOTES

STA. 0+00 CONNECTION TO EXISTING MAIN

1. REMOVE PORTIONS OF EXISTING PIPE
PAST ANY EXISTING BENDS
2. INSTALL:
1-8" COUPLING
1-8" NIPPLE, LENGTH AS REQUIRED
1-8" 22½" BEND, MJ, BLOCKED

STA. 0+76 VERANDA AVE. = STA. 0+00 ALPINE ST.
ALPINE STREET CONNECTION

- ALONG VERANDA AVENUE:
- 1-8"x8" TEE, MJ, BLOCKED
 - 1-8" NIPPLE, 24" LENGTH
 - 1-8" GATE VALVE & BOX
- ALONG ALPINE STREET:
- 1-8" NIPPLE, 24" LENGTH
 - 1-8" GATE VALVE & BOX

STA. 2+52 VERANDA AVE. = STA. 0+00 NEWBURY AVE.
NEWBURY AVENUE CONNECTION

- 1-8" 90° BEND, MJ, BLOCKED

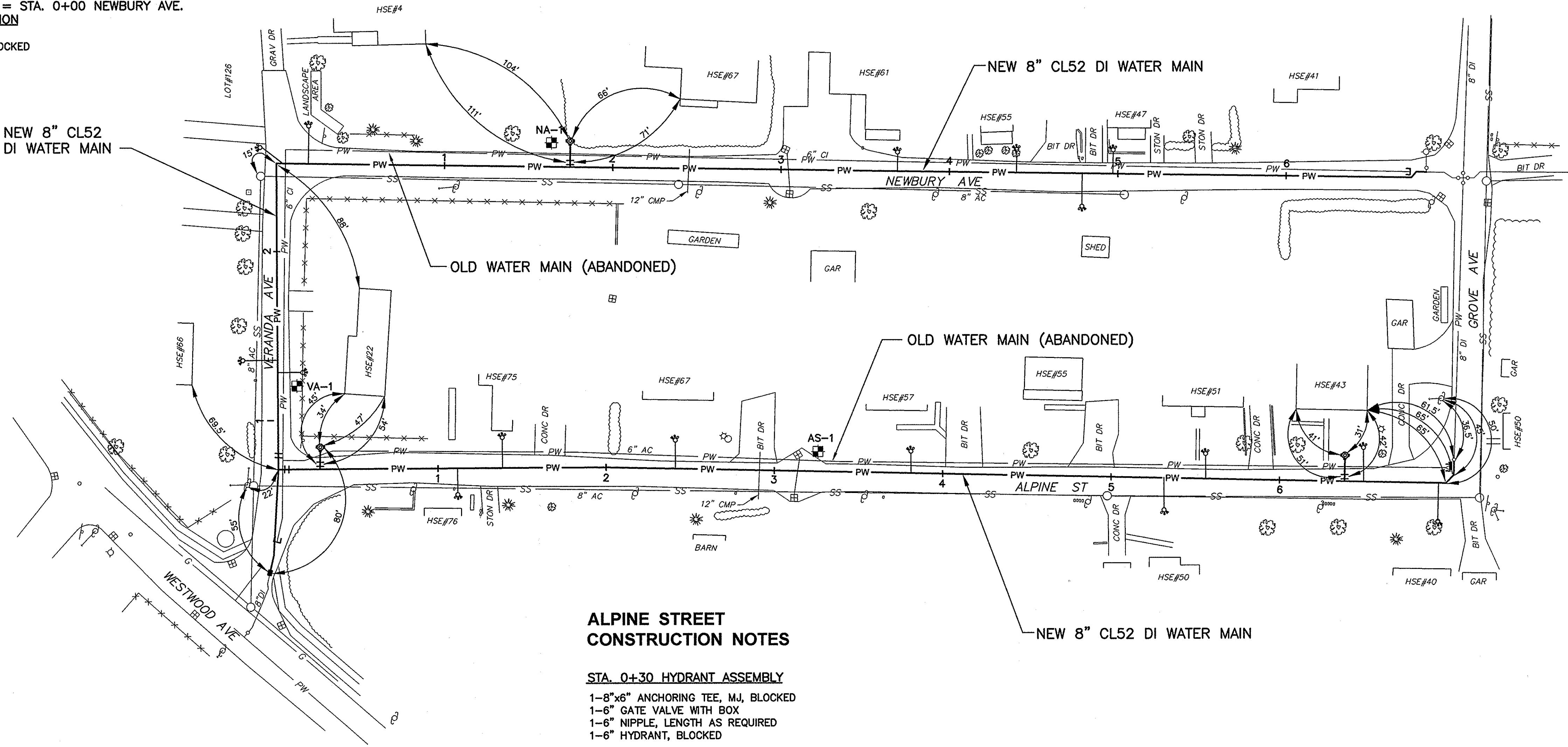
NEWBURY AVENUE
CONSTRUCTION NOTES

STA. 1+55 HYDRANT ASSEMBLY

- 1-8"x6" ANCHORING TEE, MJ, BLOCKED
- 1-6" GATE VALVE WITH BOX
- 1-6" NIPPLE, LENGTH AS REQUIRED
- 1-6" HYDRANT, BLOCKED

STA. 6+92 GROVE AVENUE CONNECTION

1. EXCAVATED BACK TO 8"x8"x6" EXISTING
HYDRANT TEE.
2. INSTALL:
1-8" 45° BEND, MJ, BLOCKED
1-8" NIPPLE, 18" LONG
1-8" 45° BEND, MJ, BLOCKED



ALPINE STREET
CONSTRUCTION NOTES

STA. 0+30 HYDRANT ASSEMBLY

- 1-8"x6" ANCHORING TEE, MJ, BLOCKED
- 1-6" GATE VALVE WITH BOX
- 1-6" NIPPLE, LENGTH AS REQUIRED
- 1-6" HYDRANT, BLOCKED

STA. 6+40 HYDRANT ASSEMBLY

- 1-8"x6" ANCHORING TEE, MJ, BLOCKED
- 1-6" GATE VALVE WITH BOX
- 1-6" NIPPLE, LENGTH AS REQUIRED
- 1-6" HYDRANT, BLOCKED

STA. 6+95 BEND

- 1-8" 45° BEND, MJ, BLOCKED
- 1-8" NIPPLE, 10' LONG
- 1-8" 45° BEND, MJ, BLOCKED

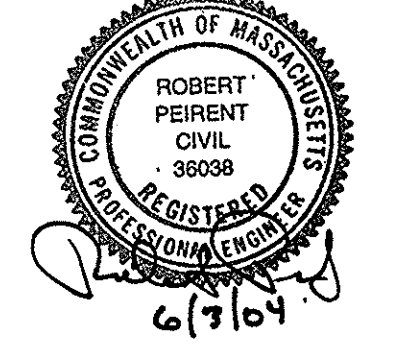
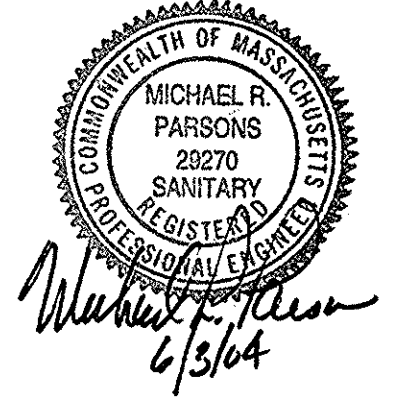
SEQUENCE OF CONSTRUCTION:

1. INSTALL ALL NEW WATER MAINS, VALVES AND HYDRANT ASSEMBLIES ON ALL STREETS EXCEPT FOR THE THREE CONNECTIONS TO EXISTING MAINS. INSTALL TEMPORARY PLUG OR CAP AT STA 0+20± VERANDA AVE.
2. COMPLETE GROVE AVE CONNECTION AT STA 7+10 ALPINE ST. OPEN EXISTING VALVE AT STA 7+10 TO PRESSURIZE ALL NEW WATER MAINS, THEN CLOSE EXISTING VALVES.
3. TEST, DISINFECT AND FLUSH ALL NEW WATER MAINS.
4. AFTER APPROVAL FROM THE ENGINEER, COMPLETE ALL WATER SERVICE RECONNECTIONS.
5. REMOVE TEMPORARY PLUG OR CAP AT STA 0+20 VERANDA AVE, THEN COMPLETE EXISTING WATER MAIN CONNECTIONS AT STA 0+00 VERANDA AVE AND STA 7+00 NEWBURY AVE.

RECORD PLAN

THIS RECORD PLAN WAS PREPARED BASED ON LIMITED INFORMATION GATHERED DURING CONSTRUCTION OF THE PROJECT AND INDICATES ONLY SIGNIFICANT CHANGES MADE FROM THE DESIGN PLANS DURING CONSTRUCTION.

Tighe & Bond
Consulting Engineers
53 Southampton Road
Westfield, Massachusetts
(413) 562-1600
www.tighebond.com



**FY2004
Water
Improvements**

Department of
Public Works

East Longmeadow,
Massachusetts

1	1/05	RECORD PLAN
Mark	Date	Description
PROJECT NO: E0451-3-02		
FILE: E0451WATERIC002		
DRAWN BY: CFY, TMF		
CHECKED: SMS		
APPROVED BY: RP, MRP		
VERANDA AVENUE, NEWBURY AVENUE, ALPINE STREET		
SCALE: 1" = 40'		
SHEET 3 OF 9		