

**FY2004
Water
Improvements**

Department of
Public Works

East Longmeadow,
Massachusetts

1	1/05	RECORD PLAN
Mark	Date	Description
PROJECT NO: E0451-3-02		
FILE: E0451WATERC001		
DRAWN BY: TMF		
CHECKED: SMS		
APPROVED BY: RP, MRP		

CALKINS AVENUE,
MURRAY COURT

SCALE: 1" = 40'

SHEET 5 OF 9

CALKINS AVENUE CONSTRUCTION NOTES

STA. 0+00 NORTH MAIN STREET CONNECTION

- PORTIONS OF EXISTING MAIN SHALL BE REMOVED TO ALLOW FOR CONNECTION
- ALONG NORTH MAIN STREET:
1-12"x8" TEE, MJ, BLOCKED
4-12" NIPPLES, 36" LENGTH
2-12" GATE VALVE & BOX
2-12" COUPLING
- ALONG CALKINS AVENUE:
1-8" NIPPLE, 36" LENGTH
1-8" GATE VALVE & BOX

STA. 1+32 MURRAY COURT CONNECTION

ALONG CALKINS AVENUE:
1-8"x8" TEE, MJ, BLOCKED
1-8" NIPPLE, 36" LENGTH
1-8" GATE VALVE & BOX

ALONG MURRAY COURT:
1-8" NIPPLE, 36" LENGTH
1-8" GATE VALVE & BOX

STA. 3+65 HYDRANT ASSEMBLY

1-8"x6" ANCHORING TEE, MJ, BLOCKED
1-6" GATE VALVE WITH BOX
1-6" NIPPLE, LENGTH AS REQUIRED
1-6" HYDRANT, BLOCKED

STA. 3+70 END OF WATER MAIN

1-8" CAP, MJ, BLOCKED

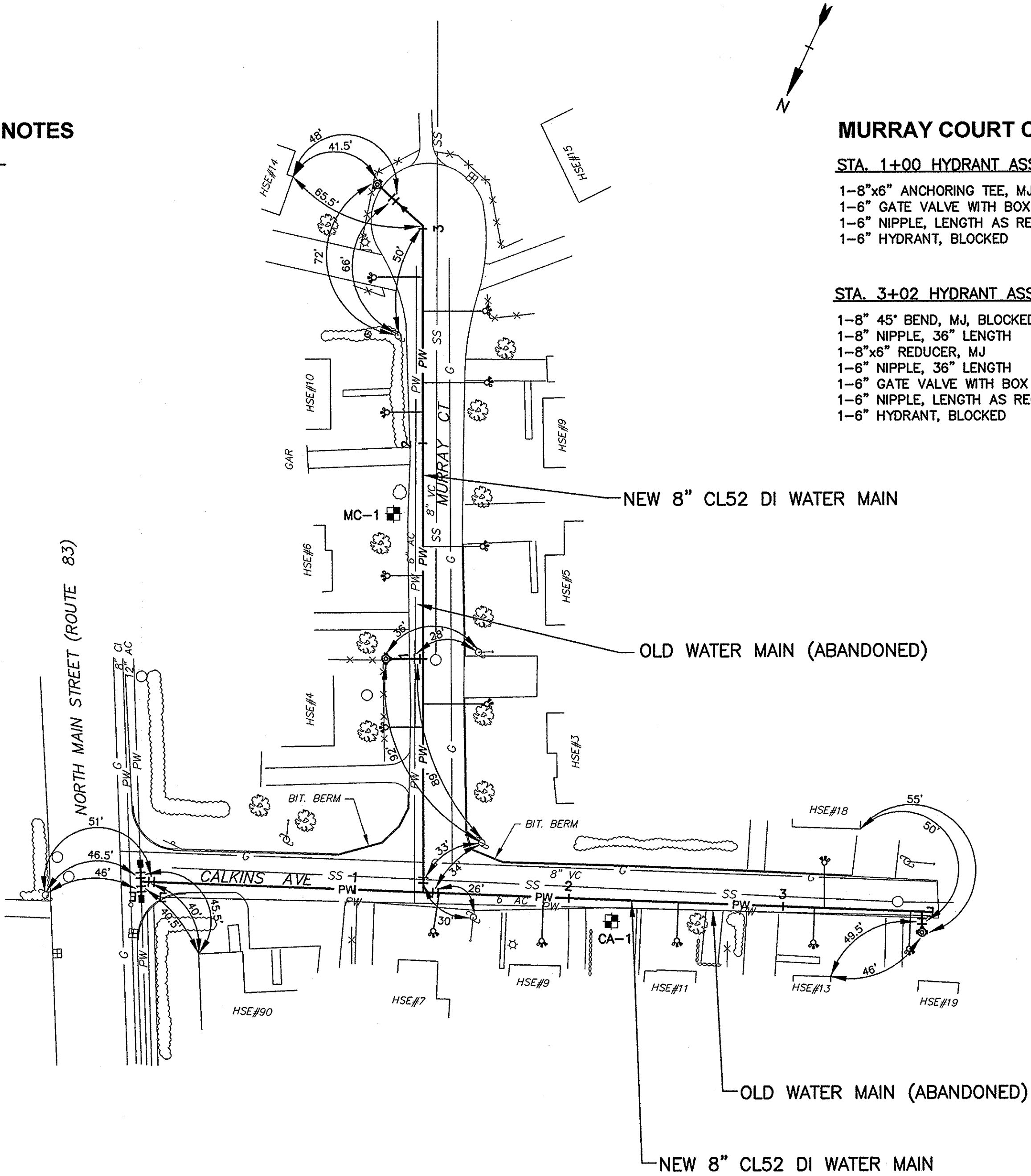
MURRAY COURT CONSTRUCTION NOTES

STA. 1+00 HYDRANT ASSEMBLY

1-8"x6" ANCHORING TEE, MJ, BLOCKED
1-6" GATE VALVE WITH BOX
1-6" NIPPLE, LENGTH AS REQUIRED
1-6" HYDRANT, BLOCKED

STA. 3+02 HYDRANT ASSEMBLY

1-8" 45° BEND, MJ, BLOCKED
1-8" NIPPLE, 36" LENGTH
1-8"x6" REDUCER, MJ
1-6" NIPPLE, 36" LENGTH
1-6" GATE VALVE WITH BOX
1-6" NIPPLE, LENGTH AS REQUIRED
1-6" HYDRANT, BLOCKED



RECORD PLAN

THIS RECORD PLAN WAS PREPARED BASED ON LIMITED INFORMATION GATHERED DURING CONSTRUCTION OF THE PROJECT AND INDICATES ONLY SIGNIFICANT CHANGES MADE FROM THE DESIGN PLANS DURING CONSTRUCTION.