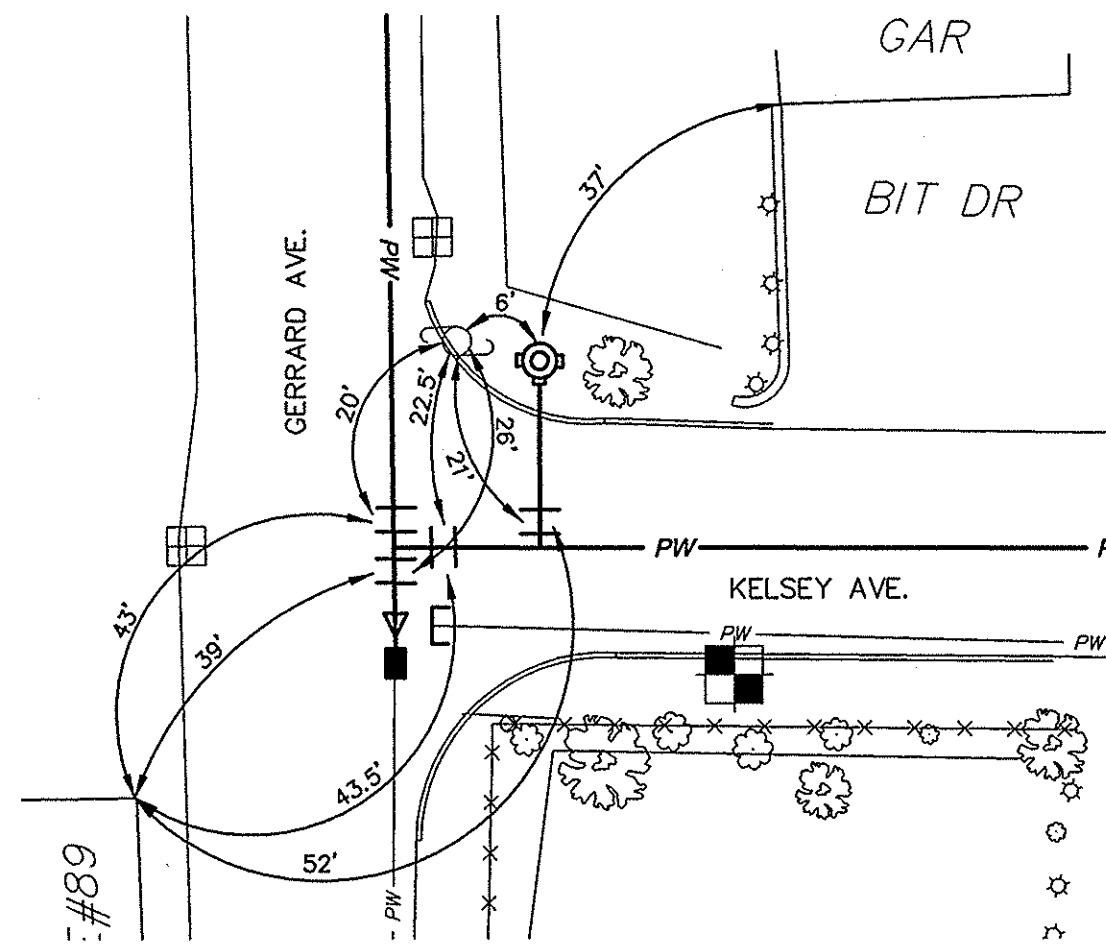


STA. 0+00 GERRARD AVENUE CONNECTION

- PORTIONS OF EXISTING 6" AC WATER MAIN SHALL BE REMOVED TO ALLOW FOR CONNECTION
- ALONG KELSEY AVENUE:
  - 1-8" NIPPLE, 36" LENGTH
  - 1-8" GATE VALVE & BOX
- ALONG GERRARD AVENUE:
  - 1-8"x8" TEE, MJ, BLOCKED
  - 3-8" NIPPLES, 36" LENGTH
  - 2-8" GATE VALVES & BOX
  - 1-8"x6" REDUCERS, MJ
  - 1-6" NIPPLES, 36" LENGTH
  - 1-6" COUPLING
  - EXTEND PIPING SOUTHERLY OF NEW TEE TO ALLOW FOR REMOVAL OF EXISTING 3/4" CONNECTION



GERRARD AVENUE - KELSEY AVENUE  
1"=20'

EUCLID AVENUE  
CONSTRUCTION NOTES

STA. 1+89 TEE CONNECTION

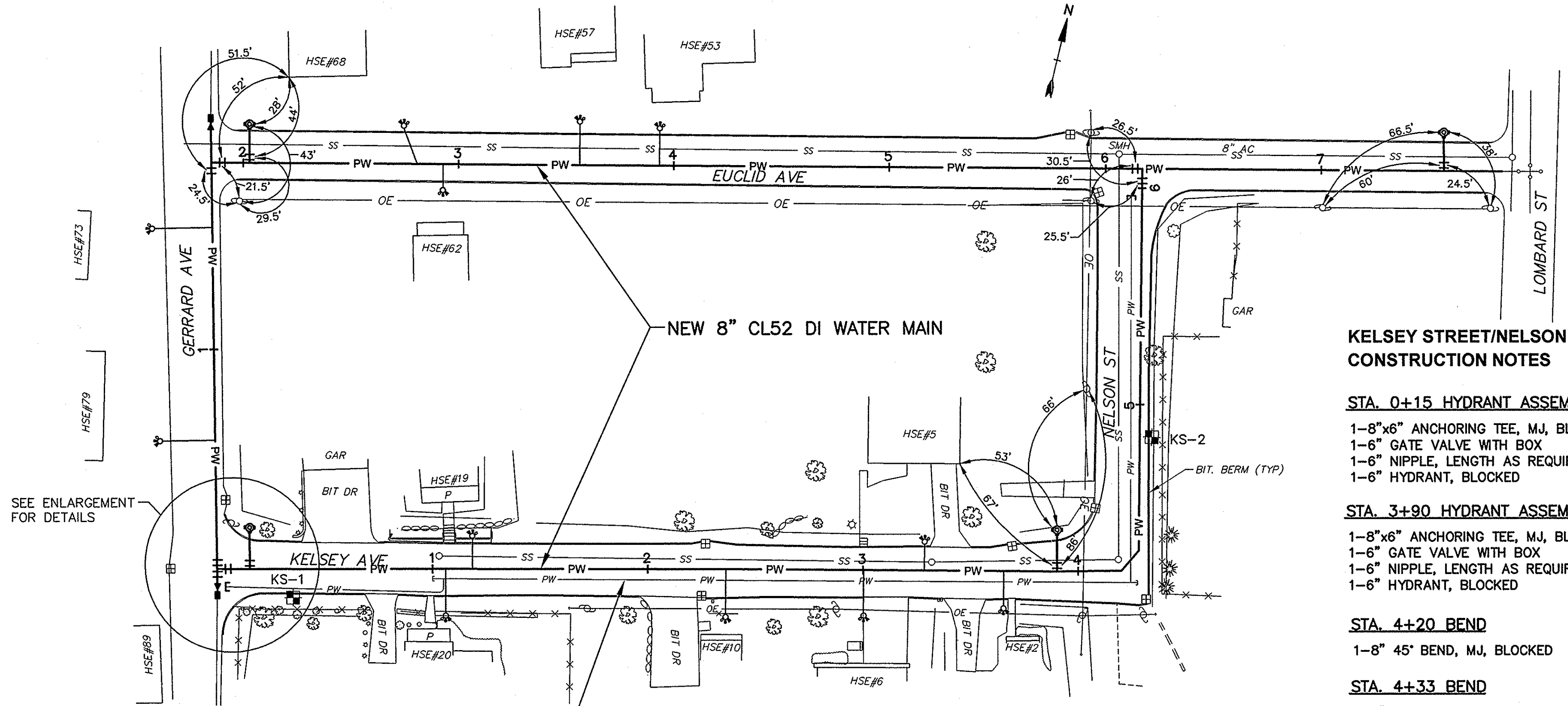
- 1-8"x8" TEE, MJ, BLOCKED
- ALONG GERRARD AVENUE:
  - 3-8" NIPPLE, LENGTH AS REQUIRED
  - 1-8" GATE VALVE & BOX
  - 1-8"x6" REDUCER, MJ
  - 1-6" COUPLING
- ALONG EUCLID AVENUE:
  - 1-8" NIPPLE, 24" LENGTH
  - 1-8" GATE VALVE & BOX

STA. 2+05 HYDRANT ASSEMBLY

- 1-8"x6" ANCHORING TEE, MJ, BLOCKED
- 1-6" GATE VALVE WITH BOX
- 1-6" NIPPLE, LENGTH AS REQUIRED
- 1-6" HYDRANT, BLOCKED

STA. 7+60 HYDRANT ASSEMBLY

- 1-8"x6" ANCHORING TEE, MJ, BLOCKED
- 1-6" GATE VALVE WITH BOX
- 1-6" NIPPLE, LENGTH AS REQUIRED
- 1-6" HYDRANT, BLOCKED



OLD WATER MAIN (ABANDONED)

NOTE:  
WATER MAIN WORK ALONG GERRARD AVENUE AND EUCLID AVENUE WAS ADDED DURING CONSTRUCTION. MAPPING FOR THESE TWO STREETS WAS TAKEN FROM BAY STATE GAS AERIAL MAPPING.

KELSEY STREET/NELSON STREET  
CONSTRUCTION NOTES

STA. 0+15 HYDRANT ASSEMBLY

- 1-8"x6" ANCHORING TEE, MJ, BLOCKED
- 1-6" GATE VALVE WITH BOX
- 1-6" NIPPLE, LENGTH AS REQUIRED
- 1-6" HYDRANT, BLOCKED

STA. 3+90 HYDRANT ASSEMBLY

- 1-8"x6" ANCHORING TEE, MJ, BLOCKED
- 1-6" GATE VALVE WITH BOX
- 1-6" NIPPLE, LENGTH AS REQUIRED
- 1-6" HYDRANT, BLOCKED

STA. 4+20 BEND

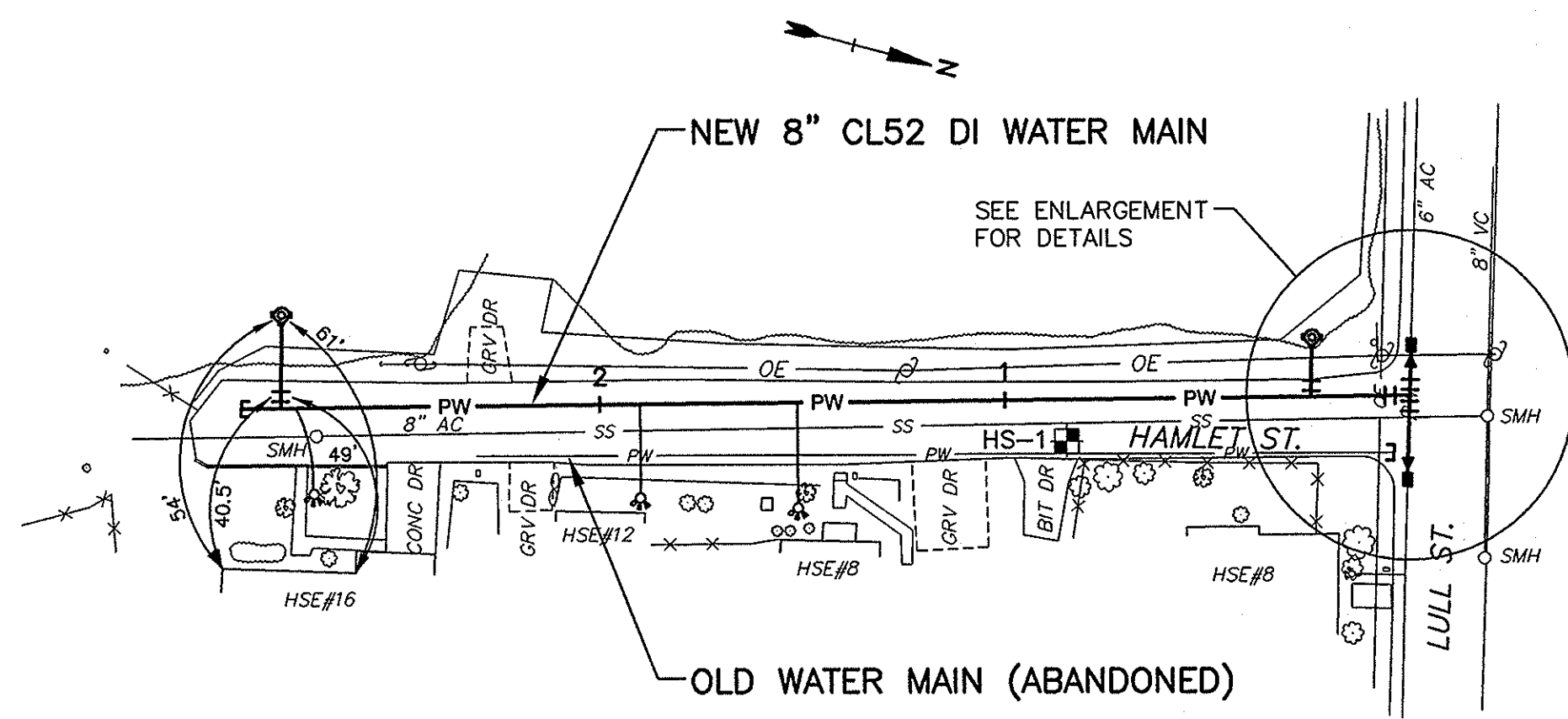
- 1-8" 45° BEND, MJ, BLOCKED

STA. 4+33 BEND

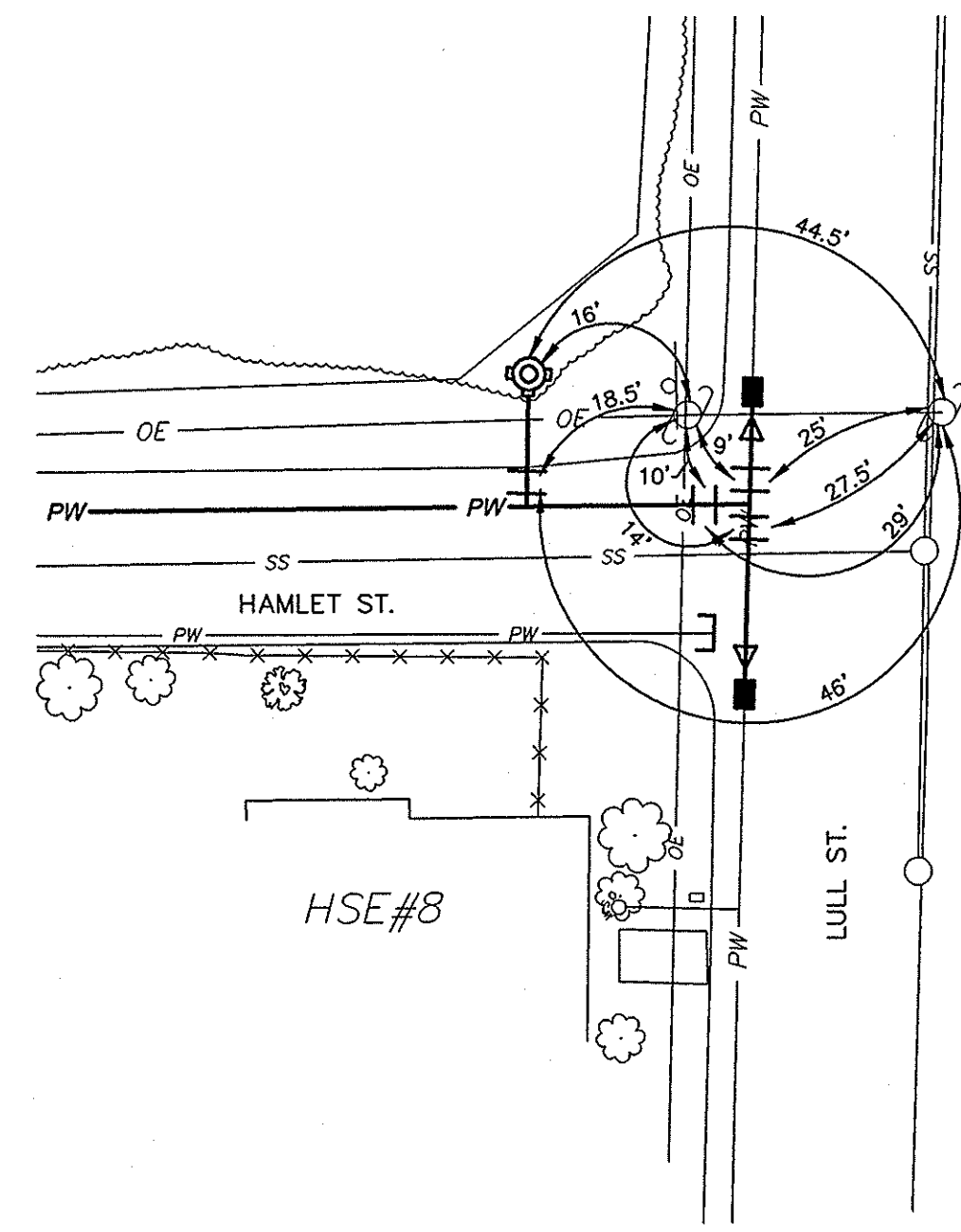
- 1-8" 45° BEND, MJ, BLOCKED

STA. 6+10 TEE CONNECTION

- 1-8"x8" TEE, MJ, BLOCKED
- 2-8" NIPPLES, 24" LENGTH
- 2-8" GATE VALVE & BOX



OLD WATER MAIN (ABANDONED)



HAMLET STREET - LULL STREET  
1"=20'

STA. 0+00 LULL STREET CONNECTION

- PORTIONS OF EXISTING 6" AC WATER MAIN SHALL BE REMOVED TO ALLOW FOR CONNECTION
  - 1-8" NIPPLE, 24" LENGTH
  - 1-8" GATE VALVE & BOX
- ALONG HAMLET STREET:
  - 1-8"x8" TEE, MJ, BLOCKED
  - 4-8" NIPPLES, 24" LENGTH
  - 2-8" GATE VALVES & BOX
  - 2-8"x6" REDUCERS, MJ
  - 2-6" NIPPLES, LENGTH AS REQUIRED
  - 2-6" COUPLING
- ALONG LULL STREET:
  - 1-8"x8" TEE, MJ, BLOCKED
  - 4-8" NIPPLES, 24" LENGTH
  - 2-8" GATE VALVES & BOX
  - 2-8"x6" REDUCERS, MJ
  - 2-6" NIPPLES, LENGTH AS REQUIRED
  - 2-6" COUPLING

STA. 0+26 HYDRANT ASSEMBLY

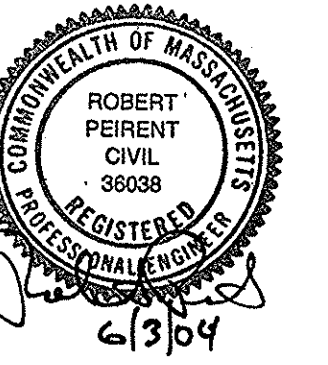
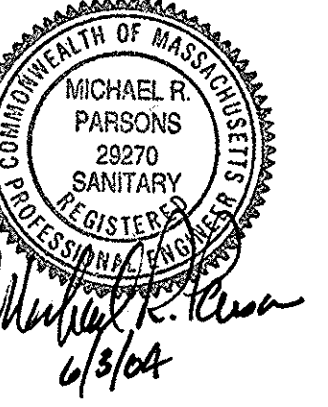
- 1-8"x6" ANCHORING TEE, MJ, BLOCKED
- 1-6" GATE VALVE WITH BOX
- 1-6" NIPPLE, LENGTH AS REQUIRED
- 1-6" HYDRANT, BLOCKED

STA. 2+89 HYDRANT ASSEMBLY

- 1-8"x6" ANCHORING TEE, MJ, BLOCKED
- 1-6" GATE VALVE WITH BOX
- 1-6" NIPPLE, LENGTH AS REQUIRED
- 1-6" HYDRANT, BLOCKED
- 1-8" NIPPLE, 36" LENGTH
- 1-8" CAP, MJ, BLOCKED

RECORD PLAN

THIS RECORD PLAN WAS PREPARED BASED ON LIMITED INFORMATION GATHERED DURING CONSTRUCTION OF THE PROJECT AND INDICATES ONLY SIGNIFICANT CHANGES MADE FROM THE DESIGN PLANS DURING CONSTRUCTION.



**FY2004  
Water  
Improvements**

**Department of  
Public Works**

**East Longmeadow,  
Massachusetts**

1	1/05	RECORD PLAN
Mark	Date	Description
PROJECT NO:	E0451-3-02	
FILE:	E0451/KellHamC002	
DRAWN BY:	TMF	
CHECKED:	SMS	
APPROVED BY:	RP, MRP	
HAMLET STREET, KELSEY AVENUE, NELSON STREET		
SCALE:	1" = 40'	
SHEET 6 OF 9		