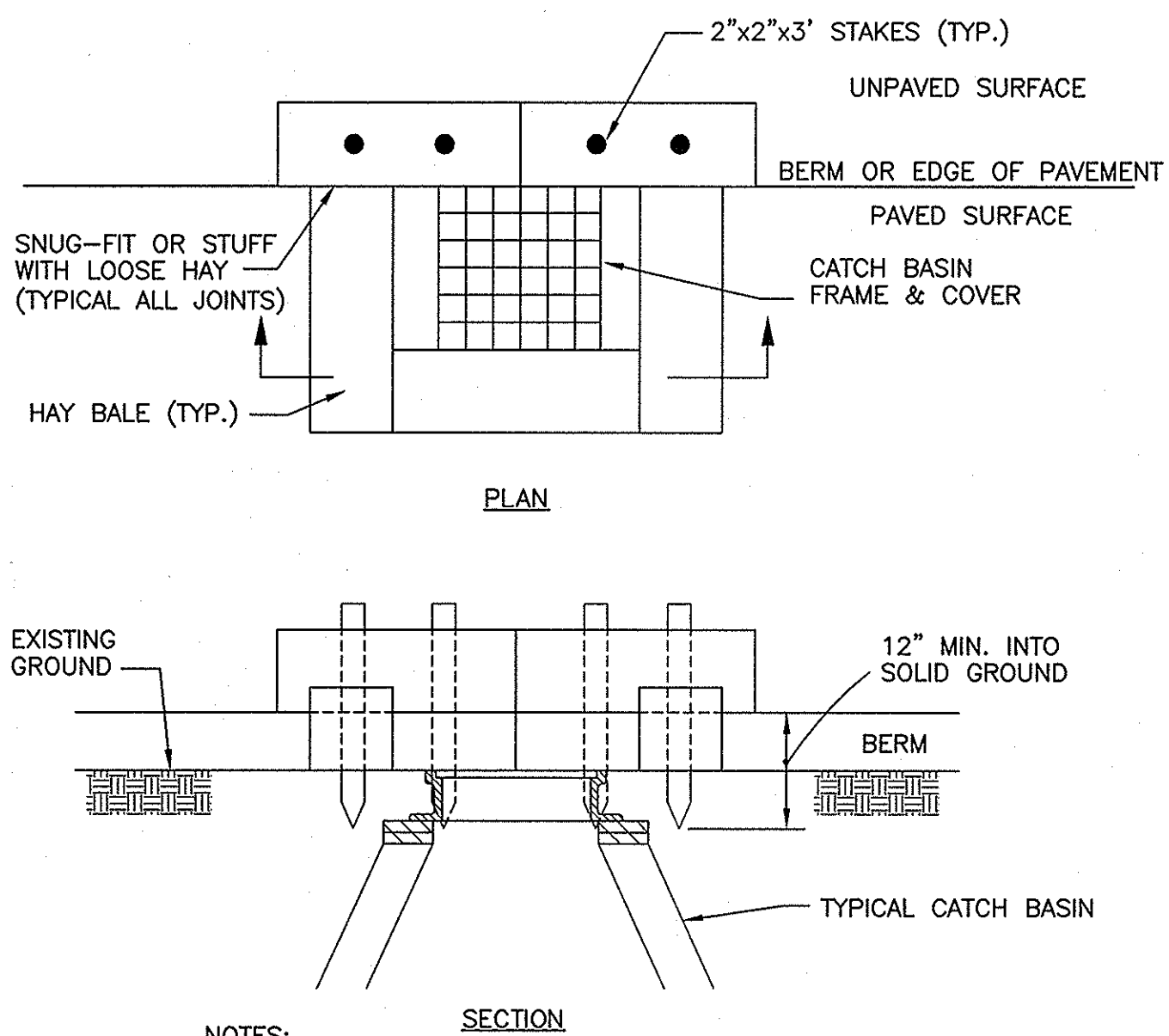


EARTH AND ROCK EXCAVATION PIPE TRENCH PAYLINE LIMITS

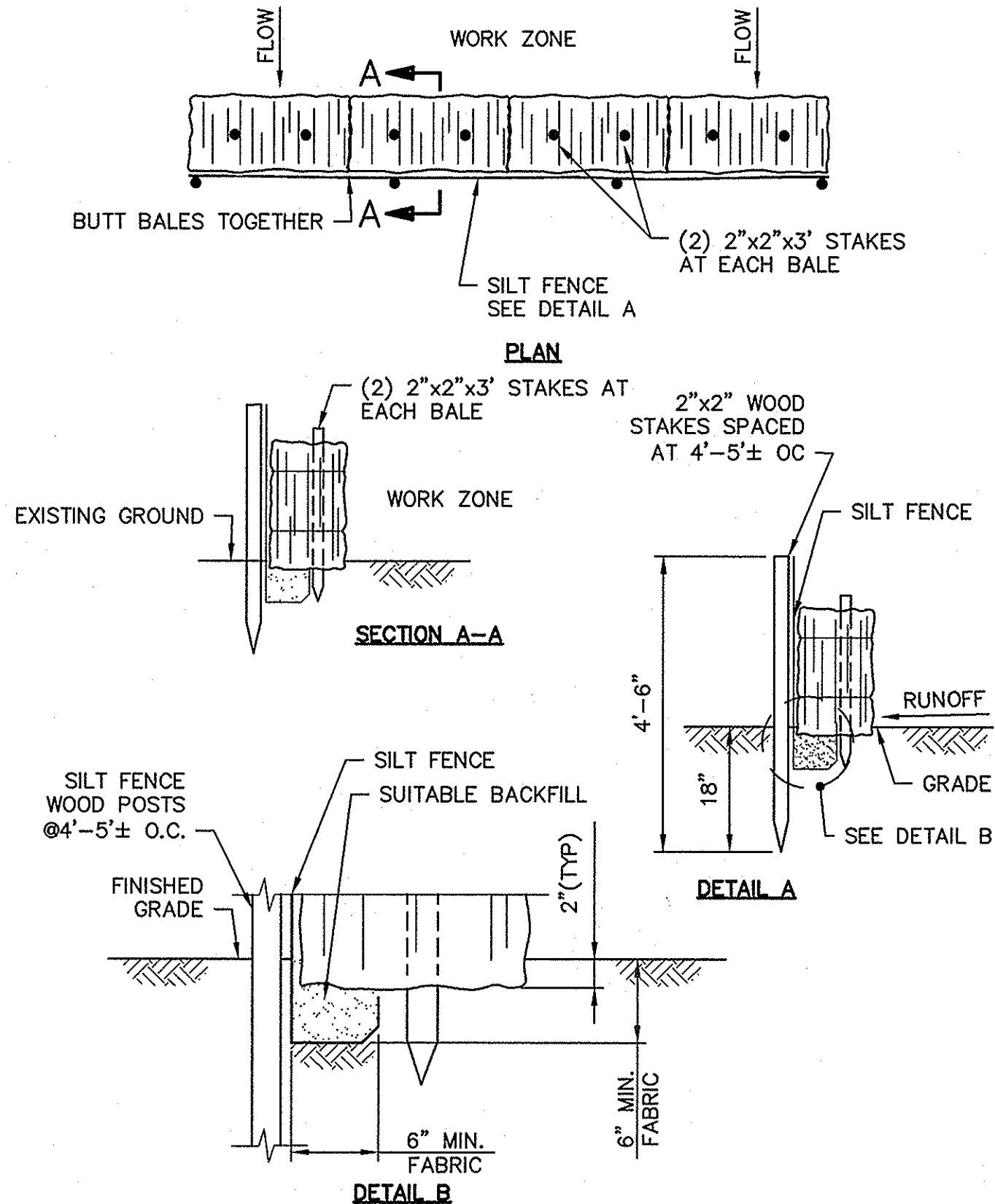
TABLE A MAXIMUM SURFACE REPAIR PAY WIDTHS (SEE NOTE 1)			
NOMINAL PIPE DIA. 0 - 24"		NOMINAL PIPE DIA. GREATER THAN 24"	
TEMPORARY PAVEMENT 6'-6" MAX.	PERMANENT PAVEMENT & LOAM & SEED 8'-6" MAX.	TEMPORARY PAVEMENT D + 4'-0" MAX.	PERMANENT PAVEMENT & LOAM & SEED D + 6'-0" MAX.
TABLE B MAXIMUM TRENCH EXCAVATION PAY WIDTHS (SEE NOTE 1)			
NOMINAL PIPE DIA. 0 - 24"		NOMINAL PIPE DIA. GREATER THAN 24"	
5'-0"		D + 3'-0"	

NOTE:
1. THE PAYLINE DIMENSIONS SHOWN REPRESENT THE MAXIMUM PAYLINE LIMITS TO BE PAID. WHEN THE ACTUAL SURFACE REPAIR OR TRENCH WIDTH IS LESS, THE ACTUAL WIDTH SHALL BE PAID FOR AT THE APPLICABLE UNIT PRICE.

TRENCH PAYLINES
NO SCALE



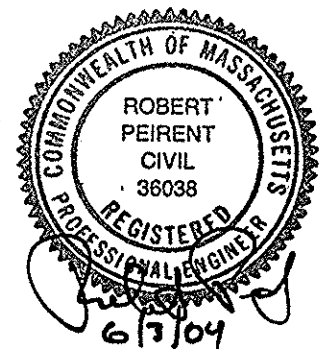
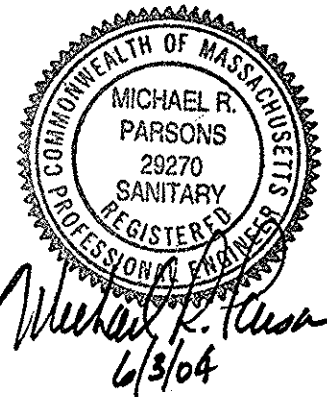
- NOTES:
1. FOR HAY BALES INSTALLED ON UNPAVED SURFACES, A MINIMUM TWO WOOD STAKES REQUIRED PER HAY BALE. STEEL DOWELS SHALL BE UTILIZED WHERE WOOD STAKES CAN'T BE DRIVEN INTO GROUND.
 2. STAKES SHALL NOT BE USED FOR HAY BALES INSTALLED ON PAVED SURFACES.
 3. HAYBALES SHALL BE INSTALLED AROUND ALL CATCHBASINS IN THE PROJECT AREA.



RECORD PLAN

THIS RECORD PLAN WAS PREPARED BASED ON LIMITED INFORMATION GATHERED DURING CONSTRUCTION OF THE PROJECT AND INDICATES ONLY SIGNIFICANT CHANGES MADE FROM THE DESIGN PLANS DURING CONSTRUCTION.

Tighe&Bond
Consulting Engineers
53 Southampton Road
Westfield, Massachusetts
(413) 562-1600
www.tighebond.com



**FY2004
Water
Improvements**

**Department of
Public Works**

**East Longmeadow,
Massachusetts**

Mark	Date	Description
1	1/05	RECORD PLAN
PROJECT NO: E0451-3-02		
FILE: E0451MISCDTLS		
DRAWN BY: TMF		
CHECKED BY: SMS		
APPROVED BY: RP, MRP		

MISCELLANEOUS DETAILS

SCALE: AS SHOWN

SHEET 8 OF 9