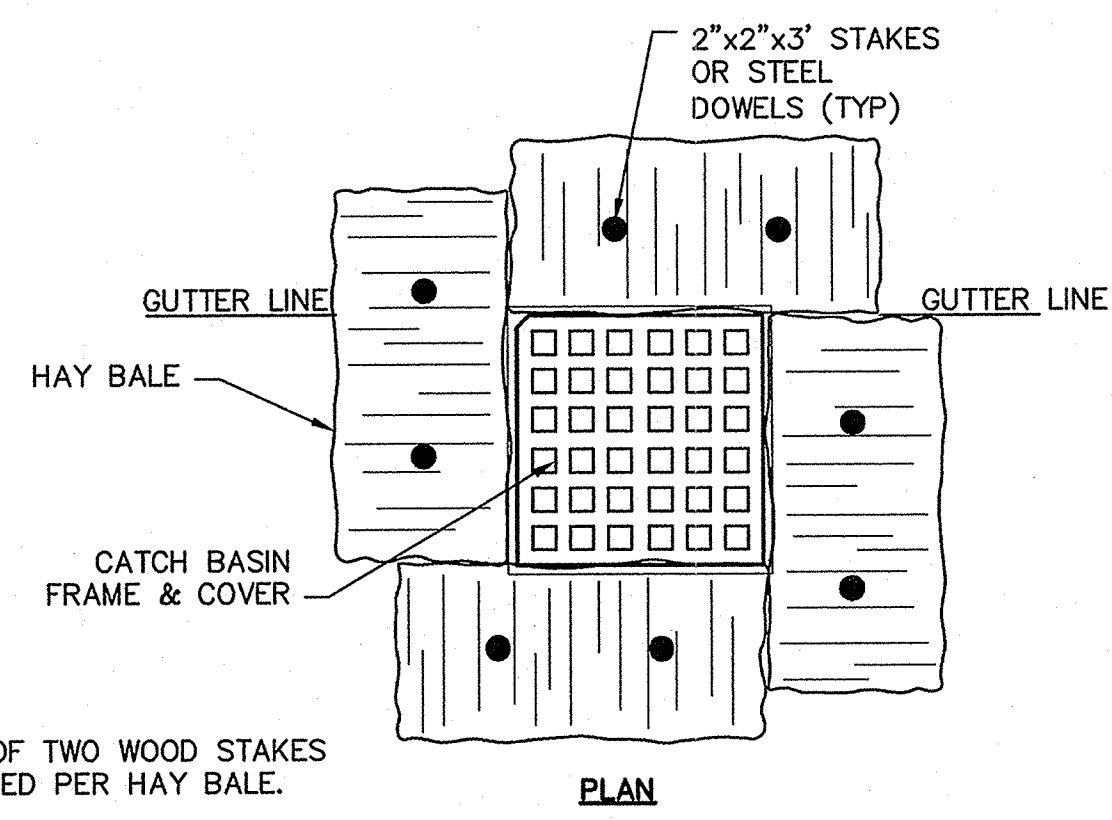


TABLE A – MAXIMUM SURFACE REPAIR PAY WIDTHS (SEE NOTE)			
OUTSIDE PIPE DIAMETER 0 – 24"		OUTSIDE PIPE DIAMETER GREATER THAN 24"	
PAVEMENT REPAIR	LOAMING & SEEDING	PAVEMENT REPAIR	LOAMING & SEEDING
6'-6" MAX.	8'-6" MAX.	D + 4'-0" MAX.	D + 6'-0" MAX.

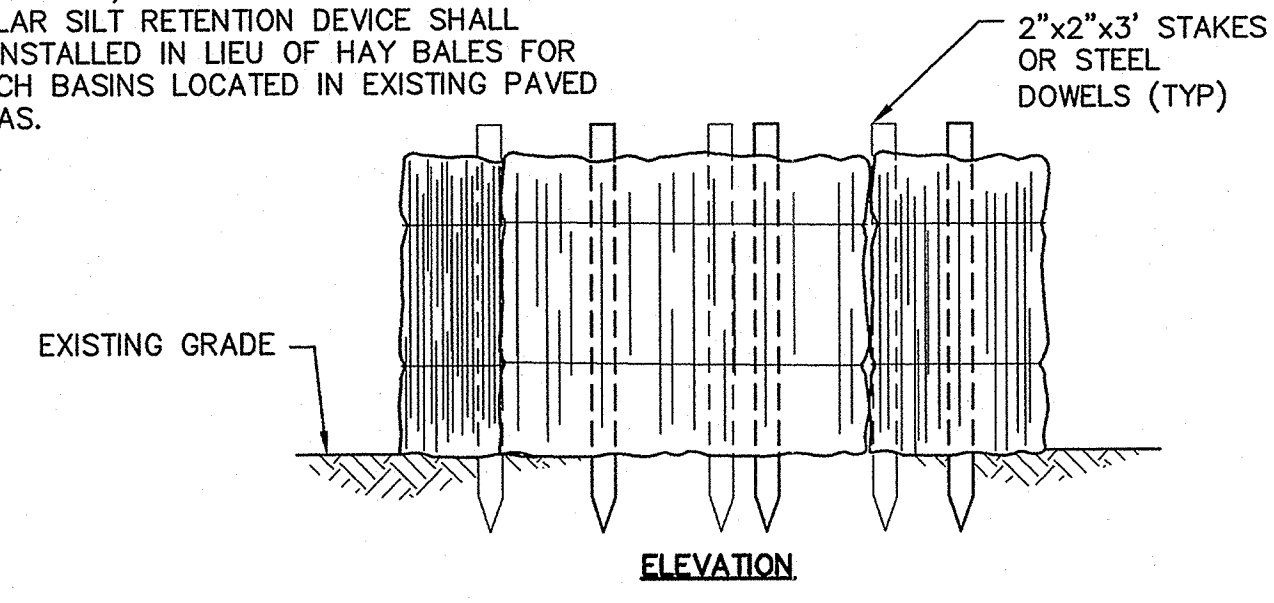
TABLE B – MAXIMUM TRENCH EXCAVATION PAY WIDTHS (SEE NOTE)	
OUTSIDE PIPE DIAMETER 0 – 24"	OUTSIDE PIPE DIAMETER GREATER THAN 24"
5'-0"	D + 3'-0"

NOTE:
THE PAYLINE DIMENSIONS SHOWN REPRESENT THE MAXIMUM PAYLINE LIMITS TO BE PAID. WHEN THE ACTUAL SURFACE REPAIR OR TRENCH WIDTH IS LESS, THE ACTUAL WIDTH SHALL BE PAID FOR AT THE APPLICABLE UNIT PRICE.

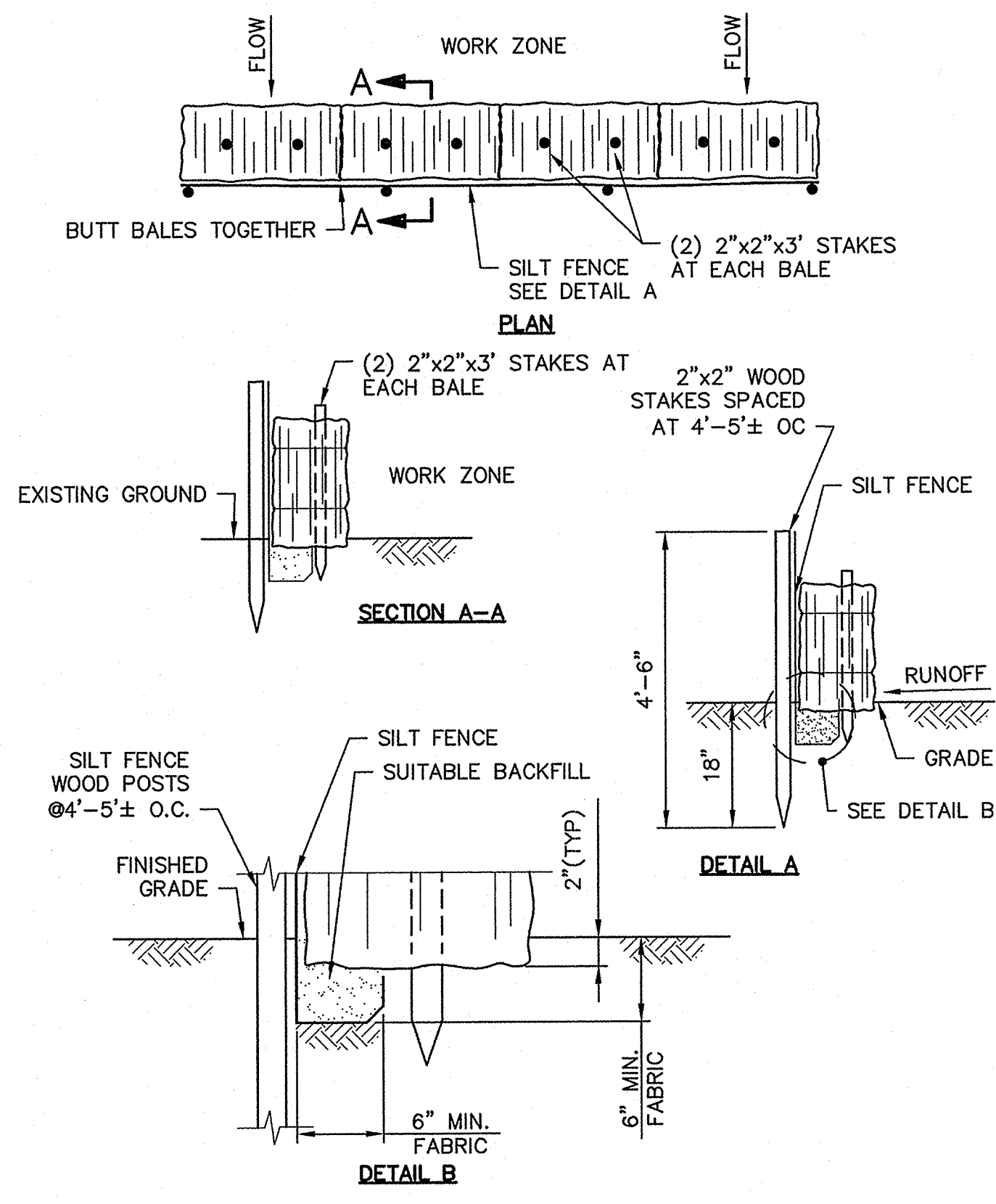
TRENCH PAYLINES
NO SCALE



- NOTE:
1. A MINIMUM OF TWO WOOD STAKES ARE REQUIRED PER HAY BALE.
 2. STEEL DOWELS MAY BE USED WHERE WOOD STAKES CANNOT BE DRIVEN INTO THE GROUND.
 3. "SILT SACKS", "DANDY BAG II" OR OTHER SIMILAR SILT RETENTION DEVICE SHALL BE INSTALLED IN LIEU OF HAY BALES FOR CATCH BASINS LOCATED IN EXISTING PAVED AREAS.



**CATCH BASIN INLET
SEDIMENT CONTROL**
NO SCALE



HAY BALES & SILTATION FENCE
NO SCALE

RECORD PLAN

THIS RECORD PLAN WAS PREPARED BASED ON LIMITED INFORMATION GATHERED DURING CONSTRUCTION OF THE PROJECT AND INDICATES ONLY SIGNIFICANT CHANGES MADE FROM THE DESIGN PLANS DURING CONSTRUCTION.

**FY 2007
Water Main
Improvements**

**Town of
East Longmeadow**

East Longmeadow,
Massachusetts

B	12/07	Record Plans
A	12/06	Initial Issue
Mark	Date	Description
PROJECT NO:		E526/1
FILE:		SHEET7
DRAWN BY:		RFB
CHECKED:		SMS, DRP
APPROVED BY:		RP
MISCELLANEOUS DETAILS		
SCALE:		AS SHOWN
SHEET 7		