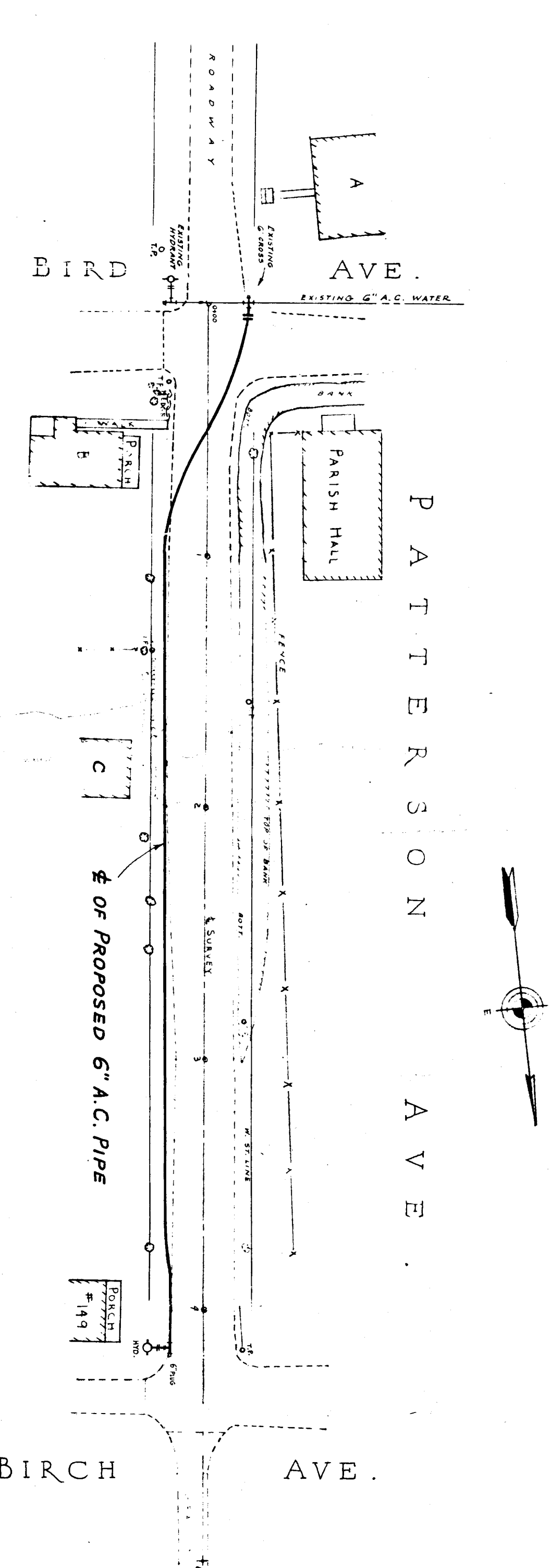


- 0+34 = BEGINNING OF JOB.
- 6"x6"x6" C.I. TEE; 3 BELL.
  - 6" C.I. NIPPLE; 24" LONG.
  - 6" VALVE AND BOX.
  - 6" C.I. NIPPLE; VARIABLE.
  - 6" C.I. SOLID SLEEVE.
  - 6" C.I. NIPPLE; 24" LONG.
  - 6" VALVE AND BOX.
  - 6" C.I. NIPPLE; VARIABLE.
  - HYDRANT.
  - SHORT LENGTH OF 6" A.C. PIPE.
- 0+30 = HYDRANT.
- HOUSE CONNECTIONS
- INSTALL NEW HOUSE CONNECTIONS FOR HOUSE 'A' AND 'B'. RECONNECT EXISTING HOUSE CONNECTION FOR HOUSE NO. 5.
- 5+50 = CONN. TO HYDRANT.
- REMOVE AND SALVAGE 1-6" C.I. PLUG. INSTALL 1-6" SHORT LENGTH OF 6" A.C. PIPE. CLOSE PIPE BY INSTALLING A SHORT LENGTH OF 6" A.C. MOA AS NEEDED.
- 0+20 = BEGINNING OF JOB.
- SHUT OFF EXISTING 6" VALVE AND REMOVE CAP OR PLUG FROM LENGTH OF PIPE. INSTALL ONE SHORT LENGTH OF 6" A.C. PIPE. CONTRACTOR TO EXCAVATE TO MAIN ON PLEASANT STREET AND SHUT OFF EXISTING CORPORATION COCK ON SMALL TUBING PIPELINE. NO PAY ITEM. COST FOR WORK, EXCEPT PAYING REPAIR TO BE INCLUDED IN COST OF LAYING PIPE.
- 3+08 = HYDRANT.
- SHORT LENGTH OF 6" A.C. PIPE.
  - 6"x6"x6" C.I. TEE; 3 BELL.
  - 6" C.I. PLUG; BLOCKED.
  - 6" C.I. NIPPLE; 24" LONG.
  - 6" VALVE AND BOX.
  - 6" C.I. NIPPLE; VARIABLE.
  - HYDRANT.
- CONNECTIONS TO HOUSES 'A', 'B', 'C', 'D', 'E', 'F', 'G', 'H', 'I', 'J', 'K', 'L', 'M', 'N', 'O', 'P', 'Q', 'R', 'S', 'T', 'U', 'V', 'W', 'X', 'Y', 'Z', 'AA', 'AB', 'AC', 'AD', 'AE', 'AF', 'AG', 'AH', 'AI', 'AJ', 'AK', 'AL', 'AM', 'AN', 'AO', 'AP', 'AQ', 'AR', 'AS', 'AT', 'AU', 'AV', 'AW', 'AX', 'AY', 'AZ', 'BA', 'BB', 'BC', 'BD', 'BE', 'BF', 'BG', 'BH', 'BI', 'BJ', 'BK', 'BL', 'BM', 'BN', 'BO', 'BP', 'BQ', 'BR', 'BS', 'BT', 'BU', 'BV', 'BW', 'BX', 'BY', 'BZ', 'CA', 'CB', 'CC', 'CD', 'CE', 'CF', 'CG', 'CH', 'CI', 'CJ', 'CK', 'CL', 'CM', 'CN', 'CO', 'CP', 'CQ', 'CR', 'CS', 'CT', 'CU', 'CV', 'CW', 'CX', 'CY', 'CZ', 'DA', 'DB', 'DC', 'DD', 'DE', 'DF', 'DG', 'DH', 'DI', 'DJ', 'DK', 'DL', 'DM', 'DN', 'DO', 'DP', 'DQ', 'DR', 'DS', 'DT', 'DU', 'DV', 'DW', 'DX', 'DY', 'DZ', 'EA', 'EB', 'EC', 'ED', 'EE', 'EF', 'EG', 'EH', 'EI', 'EJ', 'EK', 'EL', 'EM', 'EN', 'EO', 'EP', 'EQ', 'ER', 'ES', 'ET', 'EU', 'EV', 'EW', 'EX', 'EY', 'EZ', 'FA', 'FB', 'FC', 'FD', 'FE', 'FF', 'FG', 'FH', 'FI', 'FJ', 'FK', 'FL', 'FM', 'FN', 'FO', 'FP', 'FQ', 'FR', 'FS', 'FT', 'FU', 'FV', 'FW', 'FX', 'FY', 'FZ', 'GA', 'GB', 'GC', 'GD', 'GE', 'GF', 'GG', 'GH', 'GI', 'GJ', 'GK', 'GL', 'GM', 'GN', 'GO', 'GP', 'GQ', 'GR', 'GS', 'GT', 'GU', 'GV', 'GW', 'GX', 'GY', 'GZ', 'HA', 'HB', 'HC', 'HD', 'HE', 'HF', 'HG', 'HH', 'HI', 'HJ', 'HK', 'HL', 'HM', 'HN', 'HO', 'HP', 'HQ', 'HR', 'HS', 'HT', 'HU', 'HV', 'HW', 'HX', 'HY', 'HZ', 'IA', 'IB', 'IC', 'ID', 'IE', 'IF', 'IG', 'IH', 'II', 'IJ', 'IK', 'IL', 'IM', 'IN', 'IO', 'IP', 'IQ', 'IR', 'IS', 'IT', 'IU', 'IV', 'IW', 'IX', 'IY', 'IZ', 'JA', 'JB', 'JC', 'JD', 'JE', 'JF', 'JG', 'JH', 'JI', 'JJ', 'JK', 'JL', 'JM', 'JN', 'JO', 'JP', 'JQ', 'JR', 'JS', 'JT', 'JU', 'JV', 'JW', 'JX', 'JY', 'JZ', 'KA', 'KB', 'KC', 'KD', 'KE', 'KF', 'KG', 'KH', 'KI', 'KJ', 'KK', 'KL', 'KM', 'KN', 'KO', 'KP', 'KQ', 'KR', 'KS', 'KT', 'KU', 'KV', 'KW', 'KX', 'KY', 'KZ', 'LA', 'LB', 'LC', 'LD', 'LE', 'LF', 'LG', 'LH', 'LI', 'LJ', 'LK', 'LL', 'LM', 'LN', 'LO', 'LP', 'LQ', 'LR', 'LS', 'LT', 'LU', 'LV', 'LW', 'LX', 'LY', 'LZ', 'MA', 'MB', 'MC', 'MD', 'ME', 'MF', 'MG', 'MH', 'MI', 'MJ', 'MK', 'ML', 'MM', 'MN', 'MO', 'MP', 'MQ', 'MR', 'MS', 'MT', 'MU', 'MV', 'MW', 'MX', 'MY', 'MZ', 'NA', 'NB', 'NC', 'ND', 'NE', 'NF', 'NG', 'NH', 'NI', 'NJ', 'NK', 'NL', 'NM', 'NN', 'NO', 'NP', 'NQ', 'NR', 'NS', 'NT', 'NU', 'NV', 'NW', 'NX', 'NY', 'NZ', 'OA', 'OB', 'OC', 'OD', 'OE', 'OF', 'OG', 'OH', 'OI', 'OJ', 'OK', 'OL', 'OM', 'ON', 'OO', 'OP', 'OQ', 'OR', 'OS', 'OT', 'OU', 'OV', 'OW', 'OX', 'OY', 'OZ', 'PA', 'PB', 'PC', 'PD', 'PE', 'PF', 'PG', 'PH', 'PI', 'PJ', 'PK', 'PL', 'PM', 'PN', 'PO', 'PP', 'PQ', 'PR', 'PS', 'PT', 'PU', 'PV', 'PW', 'PX', 'PY', 'PZ', 'QA', 'QB', 'QC', 'QD', 'QE', 'QF', 'QG', 'QH', 'QI', 'QJ', 'QK', 'QL', 'QM', 'QN', 'QO', 'QP', 'QQ', 'QR', 'QS', 'QT', 'QU', 'QV', 'QW', 'QX', 'QY', 'QZ', 'RA', 'RB', 'RC', 'RD', 'RE', 'RF', 'RG', 'RH', 'RI', 'RJ', 'RK', 'RL', 'RM', 'RN', 'RO', 'RP', 'RQ', 'RR', 'RS', 'RT', 'RU', 'RV', 'RW', 'RX', 'RY', 'RZ', 'SA', 'SB', 'SC', 'SD', 'SE', 'SF', 'SG', 'SH', 'SI', 'SJ', 'SK', 'SL', 'SM', 'SN', 'SO', 'SP', 'SQ', 'SR', 'SS', 'ST', 'SU', 'SV', 'SW', 'SX', 'SY', 'SZ', 'TA', 'TB', 'TC', 'TD', 'TE', 'TF', 'TG', 'TH', 'TI', 'TJ', 'TK', 'TL', 'TM', 'TN', 'TO', 'TP', 'TQ', 'TR', 'TS', 'TT', 'TU', 'TV', 'TW', 'TX', 'TY', 'TZ', 'UA', 'UB', 'UC', 'UD', 'UE', 'UF', 'UG', 'UH', 'UI', 'UJ', 'UK', 'UL', 'UM', 'UN', 'UO', 'UP', 'UQ', 'UR', 'US', 'UT', 'UU', 'UV', 'UW', 'UX', 'UY', 'UZ', 'VA', 'VB', 'VC', 'VD', 'VE', 'VF', 'VG', 'VH', 'VI', 'VJ', 'VK', 'VL', 'VM', 'VN', 'VO', 'VP', 'VQ', 'VR', 'VS', 'VT', 'VU', 'VV', 'VW', 'VX', 'VY', 'VZ', 'WA', 'WB', 'WC', 'WD', 'WE', 'WF', 'WG', 'WH', 'WI', 'WJ', 'WK', 'WL', 'WM', 'WN', 'WO', 'WP', 'WQ', 'WR', 'WS', 'WT', 'WU', 'WV', 'WW', 'WX', 'WY', 'WZ', 'XA', 'XB', 'XC', 'XD', 'XE', 'XF', 'XG', 'XH', 'XI', 'XJ', 'XK', 'XL', 'XM', 'XN', 'XO', 'XP', 'XQ', 'XR', 'XS', 'XT', 'XU', 'XV', 'XW', 'XX', 'XY', 'XZ', 'YA', 'YB', 'YC', 'YD', 'YE', 'YF', 'YG', 'YH', 'YI', 'YJ', 'YK', 'YL', 'YM', 'YN', 'YO', 'YP', 'YQ', 'YR', 'YS', 'YT', 'YU', 'YV', 'YW', 'YX', 'YY', 'YZ', 'ZA', 'ZB', 'ZC', 'ZD', 'ZE', 'ZF', 'ZG', 'ZH', 'ZI', 'ZJ', 'ZK', 'ZL', 'ZM', 'ZN', 'ZO', 'ZP', 'ZQ', 'ZR', 'ZS', 'ZT', 'ZU', 'ZV', 'ZW', 'ZX', 'ZY', 'ZZ'.

**NOTE:**  
EAST CIRCLE DRIVE AND RIDGE ROAD  
CONTRACTOR TO EXCAVATE AND BACKFILL AND INSTALL A HYDRANT  
ON EAST CIRCLE DRIVE AND RIDGE ROAD.

- THIS WORK SHALL INCLUDE AT EACH:
- A** 1 - 6"x6"x6" TAPPING SLEEVE AND VALVE, FURNISHED BY TOWN AND INSTALLED BY CONTRACTOR.
  - B** 6" C.I. PIPE FROM VALVE TO HYDRANT, FURNISHED BY TOWN AND INSTALLED BY CONTRACTOR.
  - C** 1 - HYDRANT, COMPLETE IN PLACE, FURNISHED BY TOWN AND INSTALLED BY CONTRACTOR.
- PAYMENT FOR A TO BE \$100 ALLOWANCE, PLUS ITEM NO. 4.  
PAYMENT FOR B TO BE ITEM NO. 1.  
PAYMENT FOR C TO BE ITEM NO. 7.
- ABOVE TO APPLY TO ANY OTHER HYDRANT INSTALLATION ORDERED BY BOARD ON EXISTING MAINS AND NOT SHOWN ON PLANS OR CALLED FOR IN SPECIFICATIONS.  
NO \$100 ALLOWANCE ON HAMDEN ROAD HYDRANT.  
PAYING REPAIR, LOAMING AND SEEDING TO BE PAID FOR UNDER ITEMS NO. 8, 10 AND 13.



- 0+00 = BEGINNING OF JOB.
- REMOVE EXISTING 6" C.I. PLUG, AND INSTALL:
- 6"x6"x6" C.I. TEE; 3 BELL.
  - 6" C.I. NIPPLE; 24" LONG.
  - 6" VALVE AND BOX.
  - 6" C.I. NIPPLE; VARIABLE.
  - HYDRANT.
  - SHORT LENGTH OF 6" A.C. PIPE.
- HOUSE CONNECTIONS
- CONNECTIONS TO HOUSE 'C' AND HOUSE NO. 149 TO BE CONSIDERED AS NEW HOUSE CONNECTIONS.
- 4+15 = HYDRANT.
- SHORT LENGTH OF 6" A.C. PIPE.
  - 6"x6"x6" C.I. TEE; 3 BELL.
  - 6" C.I. NIPPLE; BLOCKED.
  - 6" C.I. NIPPLE; 24" LONG.
  - 6" VALVE AND BOX.
  - 6" C.I. NIPPLE; VARIABLE.
  - HYDRANT.

**PROPOSED**  
**WATER MAINS FOR 1955**  
**BOARD OF WATER COMMISSIONERS**  
**TOWN OF EAST LONGMEADOW, MASS.**  
**TIGHE & BOND CONSULTING ENGINEERS,**  
**HOLYOKE, MASS.,**  
**MARCH, 1955**  
**SCALE: 1" = 40'**