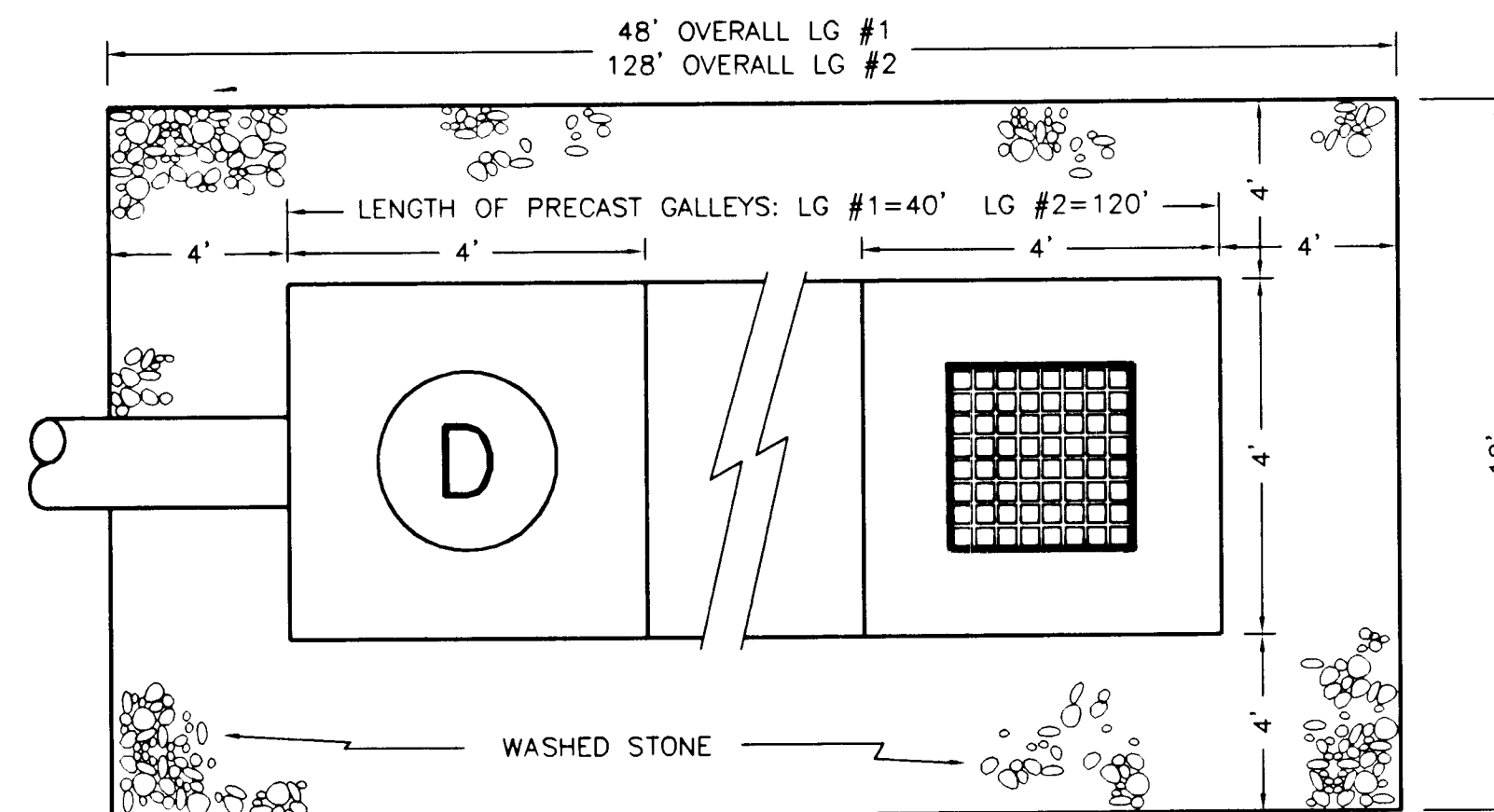


ELEVATION VIEW



PLAN VIEW

## LEACHING GALLEY DETAIL

(NOT TO SCALE)

LEACHING GALLEY #1:  
INSTALL 3 CAST IRON MANHOLE COVERS ON  
PRECAST STRUCTURES AND RAISE TO GRADE

LEACHING GALLEY #1:  
INSTALL 4 CAST IRON MANHOLE COVERS AND  
2 CAST IRON CATCH BASIN FRAMES AND GRATES  
ON PRECAST STRUCTURES AND RAISE TO GRADE

### CONCRETE SIDEWALKS:

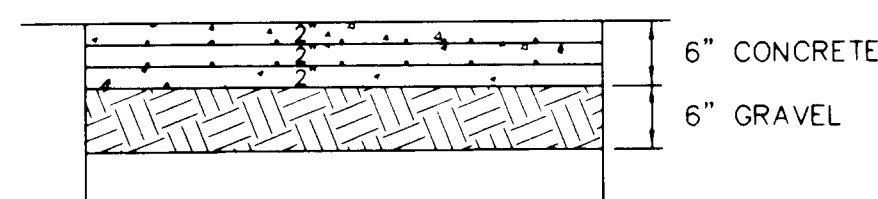
SIDEWALK TO BE 4" THICK CONCRETE  
OVER 6" COMPACTED GRAVEL BASE

#10 WELDED WIRE REINFORCEMENT  
TO BE PLACED IN CONCRETE

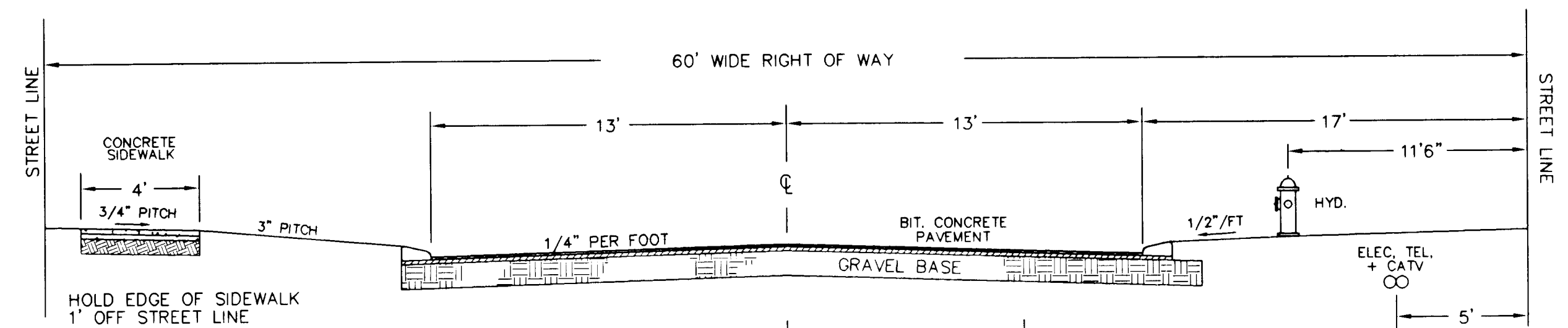
CONCRETE TO BE 4000 PSI, 8% AIR ENTRAINED

BITUMINOUS EXPANSION JOINT TO BE  
PLACED EVERY 15 LINEAL FEET

SIDEWALK AT DRIVEWAY CROSSINGS  
TO BE 6" THICK CONCRETE WITH  
2 LAYERS OF #10 WELDED WIRE  
REINFORCEMENT TO BE PLACED IN  
CONCRETE AS SHOWN BELOW



SIDEWALK X-SECTION @ DRIVEWAY



### GENERAL NOTES:

ALL CATCH BASINS TO BE 4' I.D. PRECAST CONCRETE  
WITH 4' SUMPS BELOW OUTLET INVERT.  
CATCH BASIN GRATES TO BE TYPE "C".  
DRAIN MANHOLE COVERS TO EXHIBIT THE WORD "DRAIN"

ALL SANITARY MANHOLES TO BE 4" I.D. PRECAST CONCRETE  
SANITARY MANHOLE COVERS TO EXHIBIT THE WORD "SEWER"

### PIPE SCHEDULE:

SANITARY SEWER: PVC SDR 35 SEWER PIPE

STORM DRAINAGE: SMOOTH LINED, CORRUGATED  
POLYETHYLENE DRAIN PIPE (OFF ROAD)

PVC SDR 35 SEWER PIPE (UNDER PAVEMENT)

WATER MAINS: DUCTILE IRON, CLASS 52 CEMENT LINED

WATER SERVICES: COPPER TUBING, TYPE K

ALL WATER MAIN FITTINGS, BENDS, AND VALVES  
TO BE MECHANICALLY RESTRAINED  
ALL BENDS AND END OF MAIN TO BE THRUST BLOCKED  
ALL WATER SERVICE CORPORATIONS, CURB STOPS, AND  
SERVICE BOXES TO BE MATERIALS APPROVED BY  
EAST LONGMEADOW BOARD OF PUBLIC WORKS

### ROADWAY:

BIT. CONC. PAVEMENT  
1-1/2" TOP COURSE  
2" BINDER COURSE

TACK COAT TO BE APPLIED TO DORMANT BASE  
AT DISCRETION OF SUPT. OF PUBLIC WORKS

BITUMINOUS CONCRETE  
"CAPE COD" STYLE BERM

BERM TO BE SET ON  
BINDER COURSE OF  
BITUMINOUS CONCRETE

### GRAVEL BASE:

4" COMPACTED PROCESSED GRAVEL  
8" COMPACTED GRAVEL BORROW

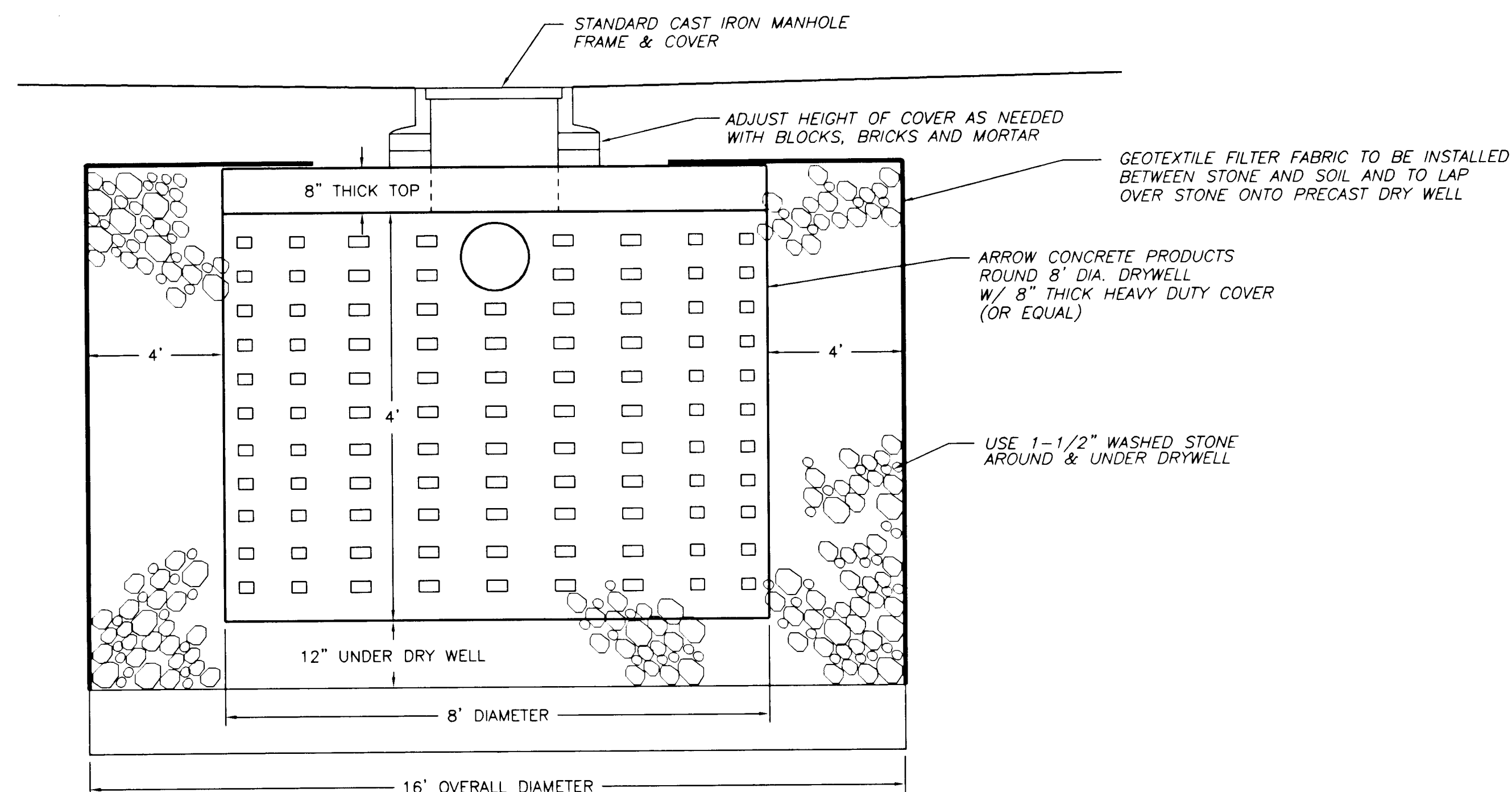
GRAVEL BASE TO EXTEND 12" BEYOND  
BACK OF BITUMINOUS BERM

GRAVEL BASE TO BE STABILIZED WITH  
CALCIUM CHLORIDE AND COMPACTED  
WITH ROLLER WEIGHING 8 TONS OR MORE

ALL MATERIALS AND CONSTRUCTION METHODS SHALL COMPLY  
WITH THE STANDARDS OF THE BOARD OF PUBLIC WORKS OF  
THE TOWN OF EAST LONGMEADOW

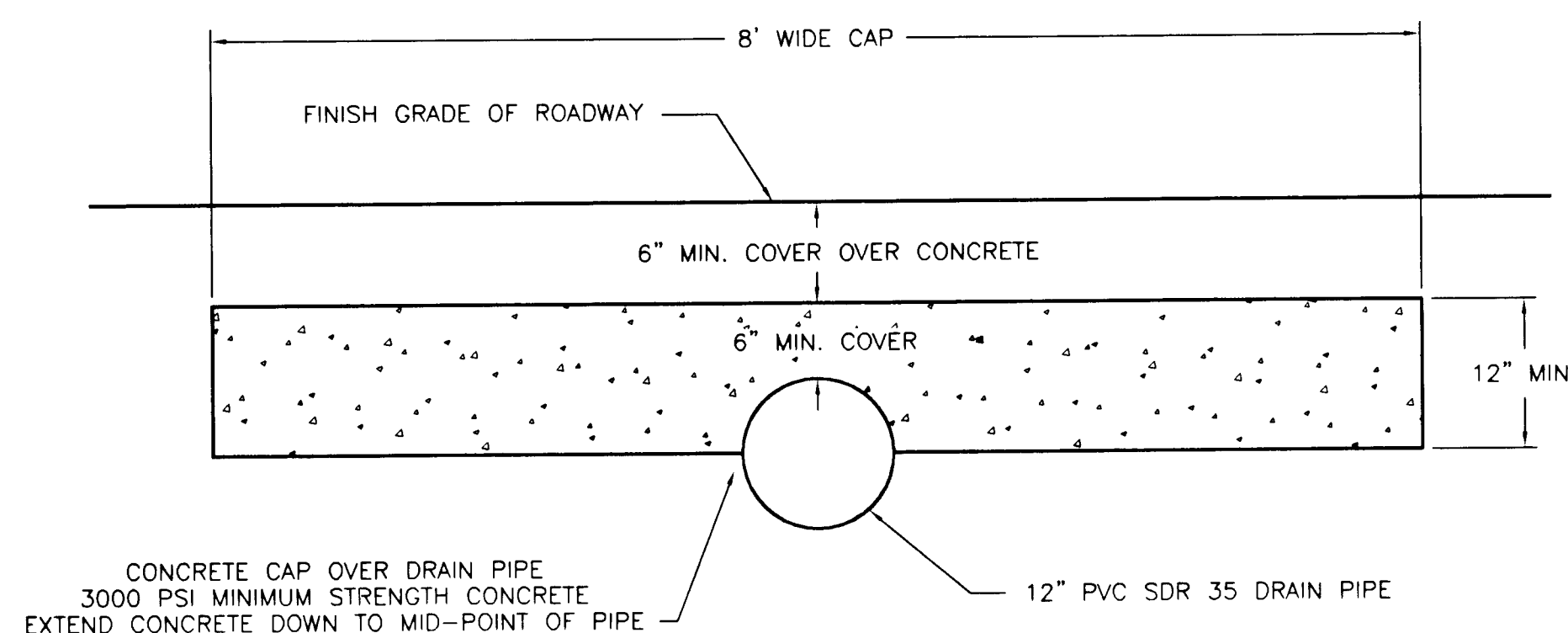
## TYPICAL SECTION

(N.T.S.)



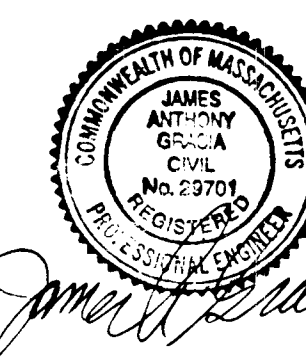
## TYPICAL DRY WELL DETAIL

(NOT TO SCALE)



## CONCRETE CAP DETAIL

(NOT TO SCALE)



NO.	DATE	DESCRIPTION	BY
1	9-12-00	ADD SIDEWALK	JAG

*Michael D. Gagliardi*  
*Michael D. Gagliardi*  
*Russ A. Gagliardi*  
*Debbie M. Gagliardi*

BOOK 319  
PAGE 127

SHEET 4 OF 4

## CONSTRUCTION DETAILS

KRONVALL HOME SITES II  
EAST LONGMEADOW, MA

PREPARED FOR:  
BALLYFERRITER REALTY TRUST  
(DEVELOPER)

SCALE: AS NOTED

DATE: 8-18-00

SMITH ASSOCIATES  
SURVEYORS, INC.

165 SHAKER ROAD, EAST LONGMEADOW, MA 01028

W-490A